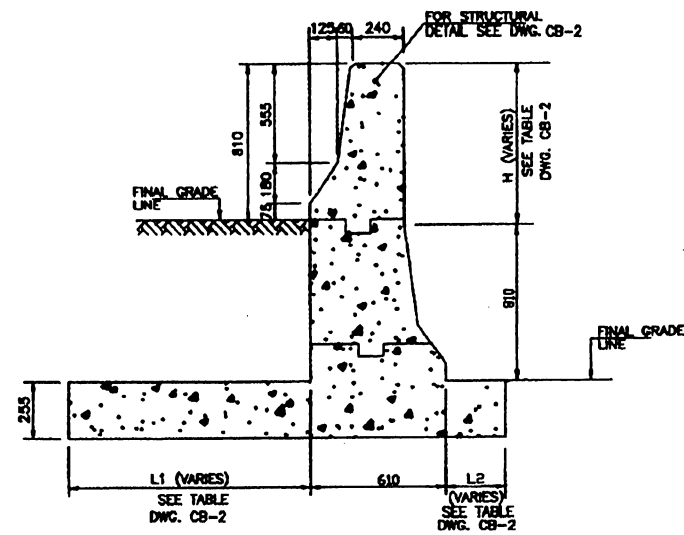
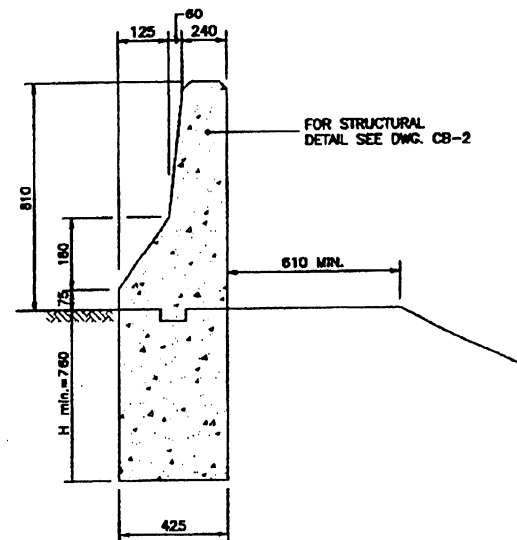


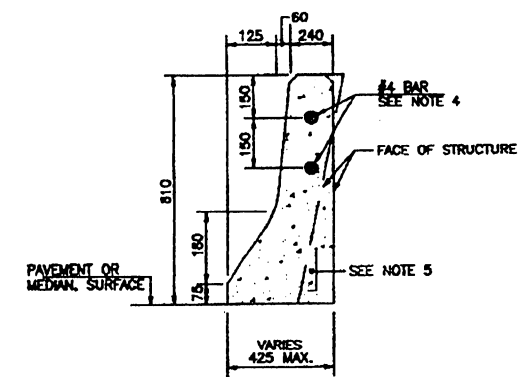
TYPE "A"
CONCRETE MEDIAN BARRIER



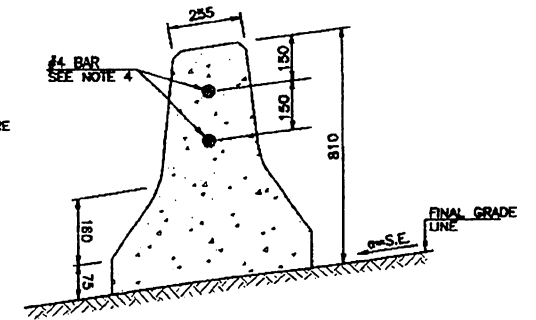
CONCRETE BARRIER TYPE "B"



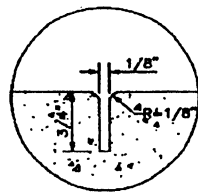
TYPE "C"
CONCRETE BARRIER AT SHOULDER



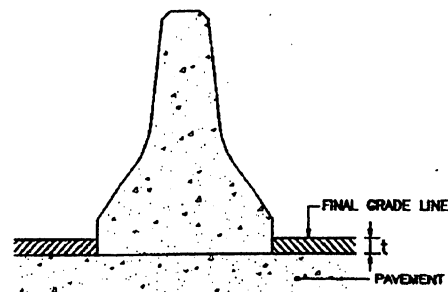
TYPE "D"
CONCRETE BARRIER PLACED ON FACE OF STRUCTURE



TYPE "E"
CONCRETE BARRIER FOR SUPERELEVATED SECTIONS

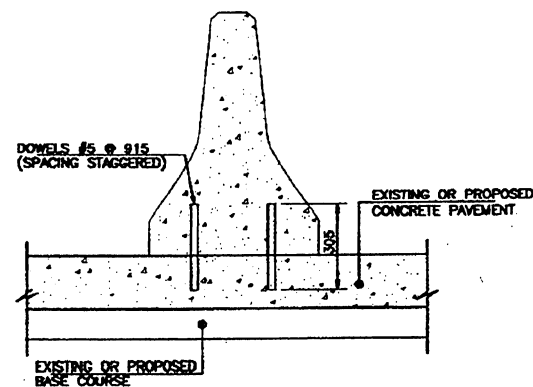


DETAIL OF CONTRACTION JOINT

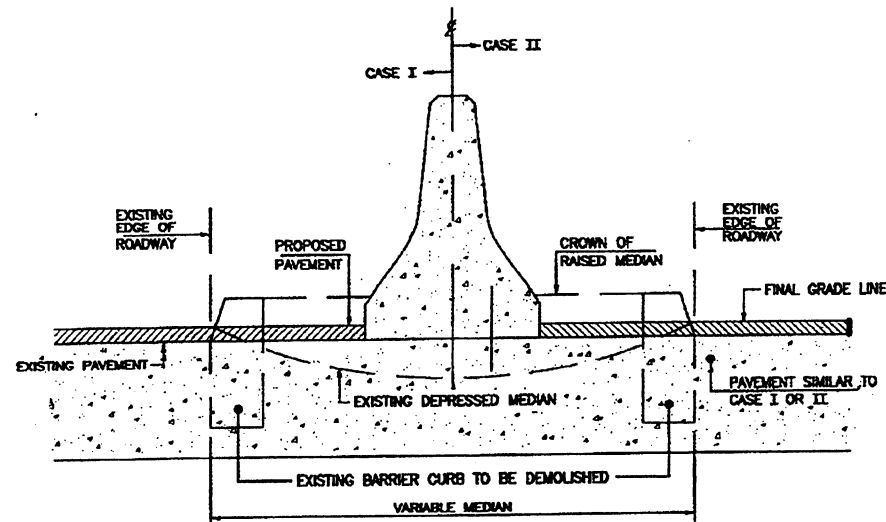


CASE I
ON EXISTING OR NEW PAVEMENT AND ANCHORED BY BITUMINOUS OVERLAY

BITUMINOUS PAVEMENT MIX	t
S1	64
S2	25



CASE II
ON EXISTING OR NEW PORTLAND CEMENT CONCRETE BASE



GENERAL NOTES:

- CLASS "B" CONCRETE SHALL BE USED ON TYPE A, D AND E CONCRETE BARRIERS. CLASS "A" CONCRETE SHALL BE USED ON TYPE "B" AND "C" BARRIERS.
- CONTRACTION JOINT, 1/8"x3/4" @ 6000 SPACING, SEE DETAIL TO BE USED ON ALL CASES AND TYPES OF BARRIER.
- WHERE TOP OF EXISTING FOOTING IS 12" OR LESS FROM SURFACE, EXTEND BASE OF TYPE "D" BARRIER TO TOP OF FOOTING.
- #4 BARS TO BE USED CONTINUOUSLY ALONG THE CONCRETE BARRIER TYPES "A", "D" AND "E".
- BATTER TO CONFORM TO FACE OF STRUCTURE, 1:6 MAXIMUM.
- TYPE "A" BARRIER WILL BE USED ALSO WHERE LIGHTING IS INSTALLED IN MEDIAN.
- ALL BARRIER SECTIONS SHALL BE PAINTED WITH WHITE PAINT IN ACCORDANCE WITH SPEC. II-P-115 F TRAFFIC PAINT, TYPE II.
- WHITE PAINT SHALL BE CONSIDERED AS SUBSIDIARY OBLIGATION OF THE CONTRACTOR COVERED UNDER PAY ITEMS FOR STANDARD SPEC. 610.
- ALL DIMENSIONS IN MILLIMETERS UNLESS OTHERWISE SPECIFIED.
- CONCRETE END SECTION OR TEMPORARY IMPACT ATTENUATOR SHALL BE USED AS THE END SECTION OF THE CONCRETE BARRIER DURING CONSTRUCTION.

EFFECTIVE DATE: MAY 1998

COMMONWEALTH OF PUERTO RICO
DEPARTMENT OF TRANSPORTATION
AND PUBLIC WORKS
HIGHWAY AND TRANSPORTATION AUTHORITY

CONCRETE BARRIER TYPES F SHAPE

RECOMMENDED BY: [Signature]
DESIGN AREA DIRECTOR
DATE: May 26, 98

APPROVED BY: [Signature]
EXECUTIVE DIRECTOR
DATE: 5-28-98

APPROVED BY: [Signature]
DIV. ADM. EHPWA-PR DIVISION
DATE: 5-28-98

DATE	REVISION	BY
06-20-97	DIMENSIONS - TYPE B & C	L.V.
04-08-98	CONCRETE BARRIER TYPE "B"	L.V.

STD. DWG. CB 1 OF 8