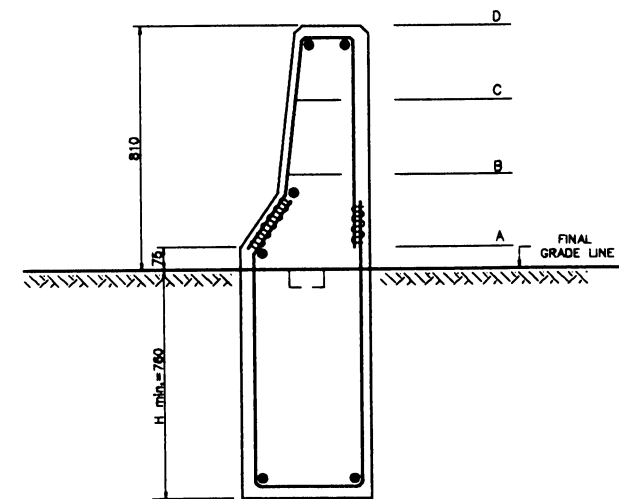


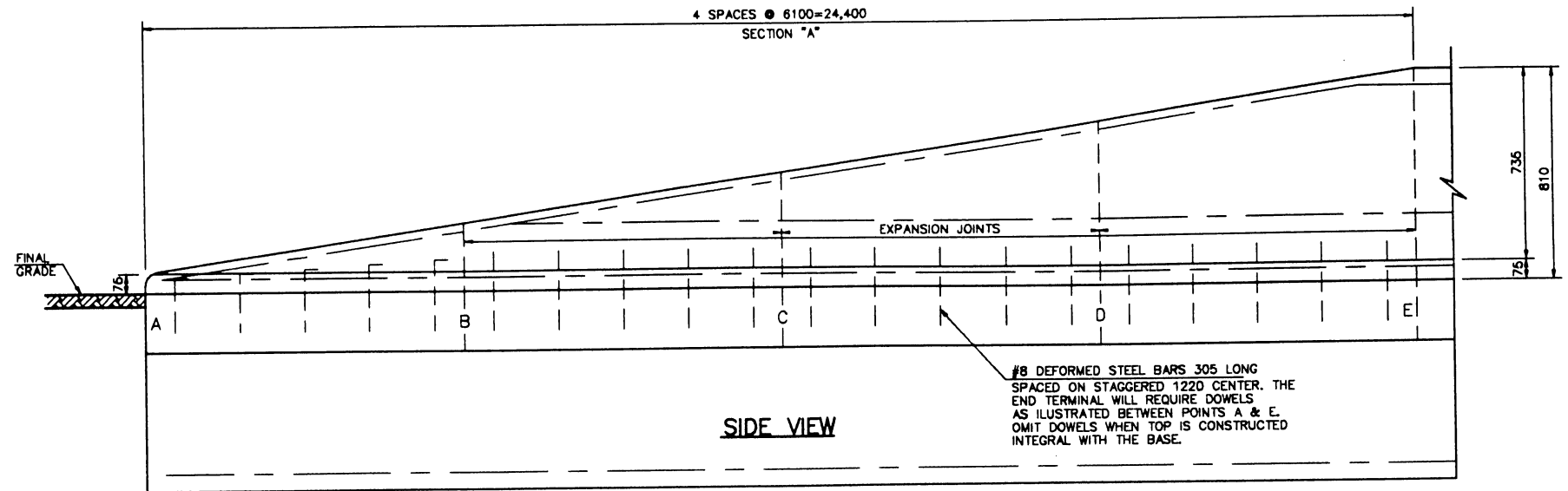
END VIEW



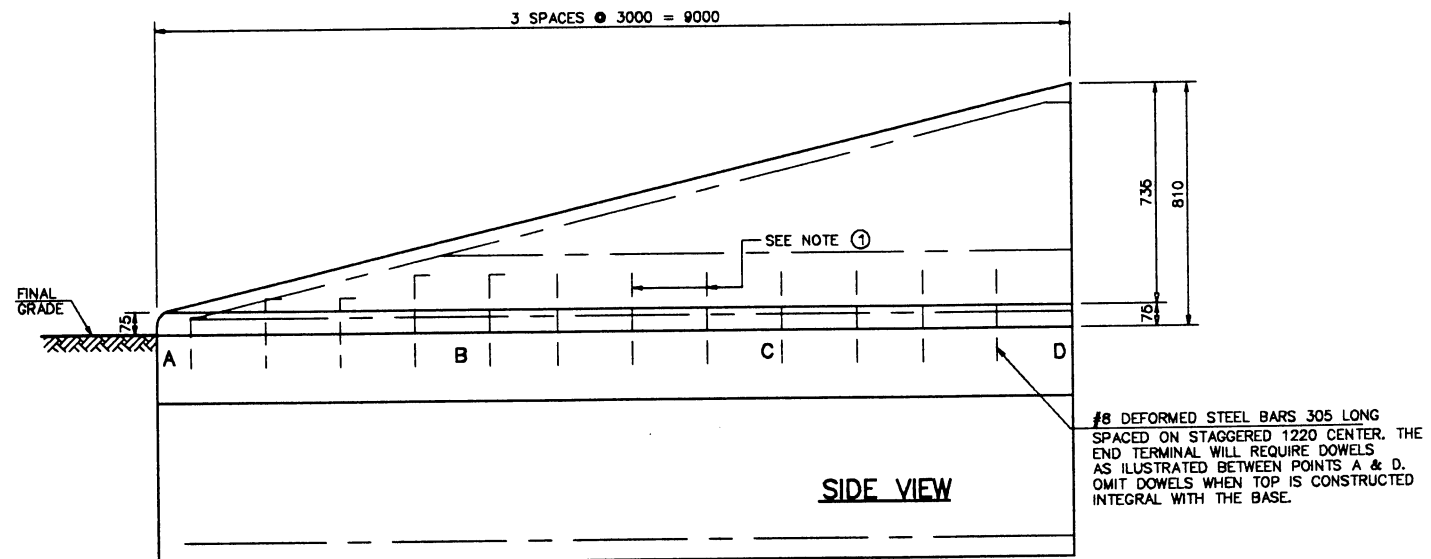
END VIEW

LEGEND:

① #8x305 DOWELS, SPACED AT 1200 C. TO C. OMIT DOWELS WHEN TOP IS CONSTRUCTED INTEGRAL WITH BASE.



END SECTION DETAIL CD-MED



END SECTION DETAIL CE-MED

COMMONWEALTH OF PUERTO RICO DEPARTMENT OF TRANSPORTATION AND PUBLIC WORKS HIGHWAY AND TRANSPORTATION AUTHORITY		
CONCRETE BARRIER END SECTIONS		RECOMMENDED BY: <i>[Signature]</i>
		DESIGN AREA DIRECTOR DATE: <i>Jun 13, 96</i>
		APPROVED BY: <i>[Signature]</i>
		EXECUTIVE DIRECTOR DATE: <i>[Signature]</i>
		APPROVED BY: <i>Eddie Rivera</i>
		DIV. ADM. FHWA-PR DIVISION DATE: <i>6-13-96</i>
DATE	REVISION	BY
STD.	CB	
DWG.	6A OF 8	