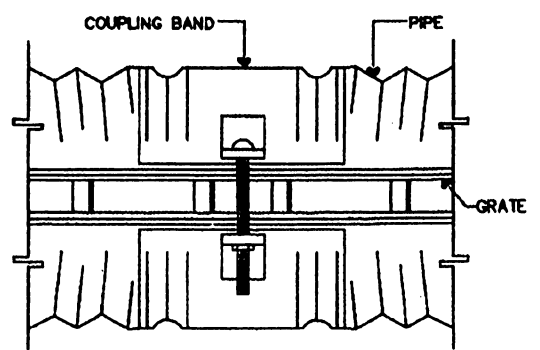
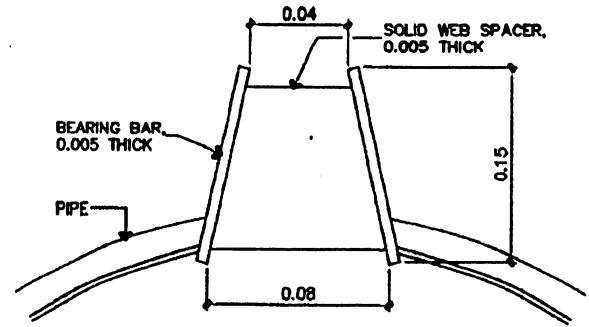


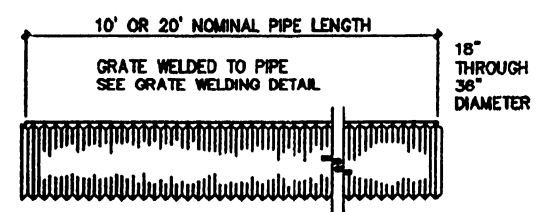
GRATE WELDING DETAIL



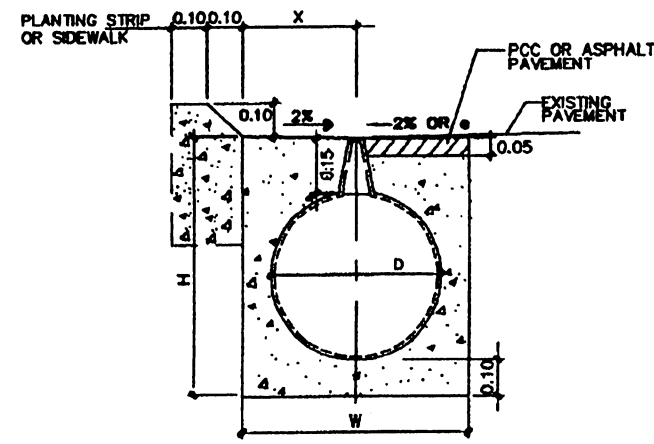
COUPLING BAND TOP VIEW



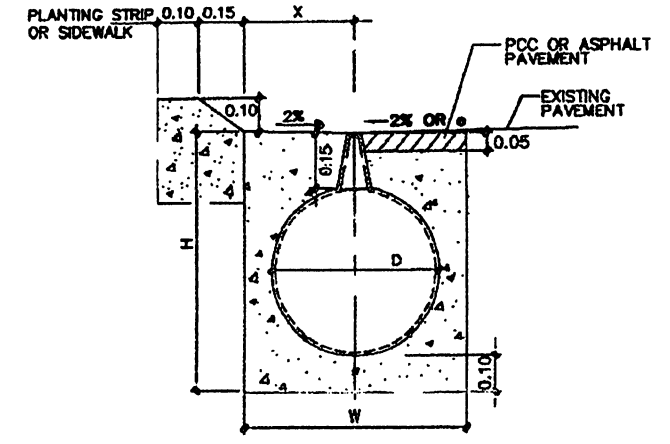
SECTION A-A STANDARD GRATE DETAIL



TYPICAL PIPE SECTION

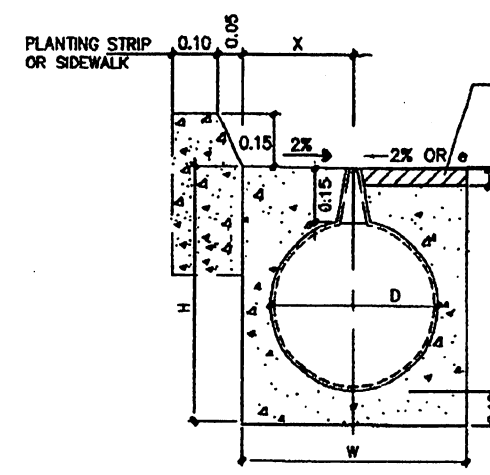


TYPE A CURB

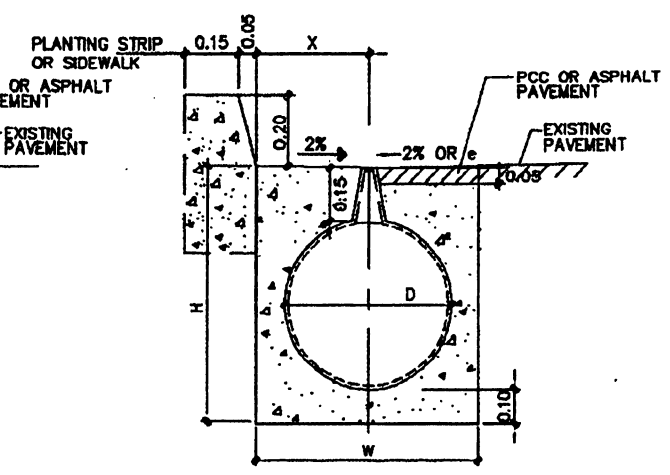


TYPE B CURB

SLOTTED PIPE DRAIN DETAIL WITH MOUNTABLE CURBS



TYPE D CURB

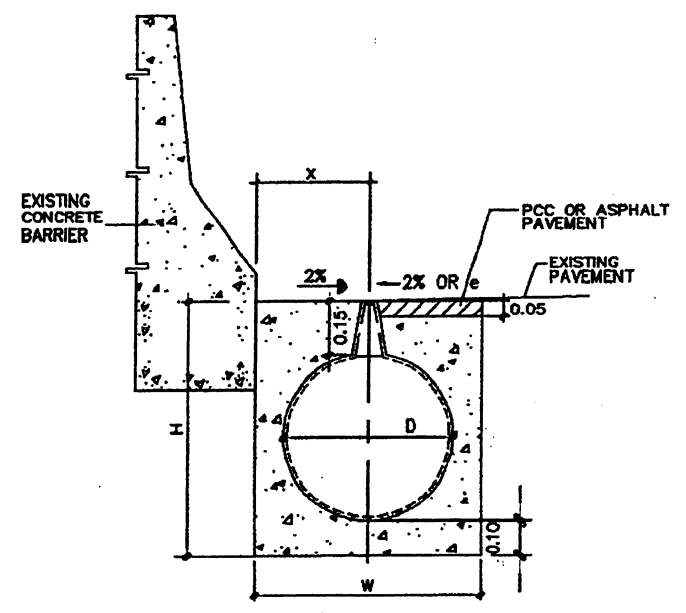


TYPE E CURB

SLOTTED PIPE DRAIN DETAIL WITH BARRIER CURBS

DIMENSIONS FOR 18", 24", 30" AND 36" SLOTTED PIPES

CURB OR BARRIER TYPE	D=18"			D=24"			D=30"			D=36"		
	H	W	X	H	W	X	H	W	X	H	W	X
A	0.71	0.64	0.32	0.86	0.80	0.40	1.01	0.96	0.48	1.16	1.10	0.55
B	0.71	0.64	0.32	0.86	0.80	0.40	1.01	0.96	0.48	1.16	1.10	0.55
D	0.71	0.64	0.32	0.86	0.80	0.40	1.01	0.96	0.48	1.16	1.10	0.55
E	0.71	0.64	0.32	0.86	0.80	0.40	1.01	0.96	0.48	1.16	1.10	0.55
CONCRETE BARRIER	0.71	0.64	0.32	0.86	0.80	0.40	1.01	0.96	0.48	1.16	1.10	0.55



SLOTTED PIPE DRAIN DETAIL WITH EXISTING CONCRETE BARRIER

NOTES:

- 1- DIMENSIONS H, W AND X FOR 18", 24", 30", AND 36" SEE TABLE.
- 2- FOR SLOTTED PIPE MATERIALS SEE STD. SPEC. 707-3.
- 3- COUPLING BAND SHALL CONFORM WITH AASHTO SPEC. M 36.
- 4- CLASS A CONCRETE SHALL BE USED FOR THE PIPE ENVELOPE.
- 5- SLOTTED PIPE SHALL HAVE 2 2/3" X 1/2" CORRUGATIONS, GAGE 16.
- 6- THE SLOT SHALL BE COVERED WITH A HEAVY DUTY TAPE OR OTHER APPROVED COVERING DURING BACKFILLING AND PAVING OPERATIONS TO PREVENT INFILTRATION OF MATERIAL INTO THE PIPE.
- 7- CLASS A CONCRETE FOR PIPE ENVELOPE WILL NOT BE MEASURED FOR DIRECT PAYMENT BUT SHALL BE A SUBSIDIARY OBLIGATION OF THE CONTRACTOR WITH ITS COST INCLUDED IN THE CONTRACT UNIT PRICE FOR SLOTTED PIPE.

- 8- A SAW CUT SHALL BE MADE ALONG THE EDGE OF THE CONCRETE BACKFILL AND EXISTING PAVEMENT TO ASSURE A NEAT FINISH LINE.
- 9- ALL GRAY CAST IRON PRODUCTS USED IN THE "DR" SERIES OF THE STANDARD DRAWINGS MUST BE FROM APPROVED MANUFACTURERS AND THE APPROVED PRODUCTS IDENTIFIED BY PRODUCT NUMBER OR CATALOG NUMBER LISTED IN THE APPROVED LIST OF MANUFACTURERS AND PRODUCTS CONTAINED IN THE FIRST PAGE OF THE "DR" SERIES.

LEGEND:
e = % SUPERELEVATION

EFFECTIVE DATE: DECEMBER 1998

COMMONWEALTH OF PUERTO RICO
DEPARTMENT OF TRANSPORTATION
AND PUBLIC WORKS
HIGHWAY AND TRANSPORTATION AUTHORITY

**DRAINAGE
SLOTTED PIPE AND
INSTALLATION DETAILS
FOR EXISTING CONDITIONS**

DATE	REVISION	BY	
12-1988	ADD NOTE 9	LV.	

RECOMMENDED BY: DESIGN AREA DIRECTOR DATE: 12-7-98 APPROVED BY: EXECUTIVE DIRECTOR DATE: 12-7-98 APPROVED BY: DIV. ADM. FHWA-PR DIVISION DATE: 12-7-98	STD. DWG. 4 OF 40
--	-------------------