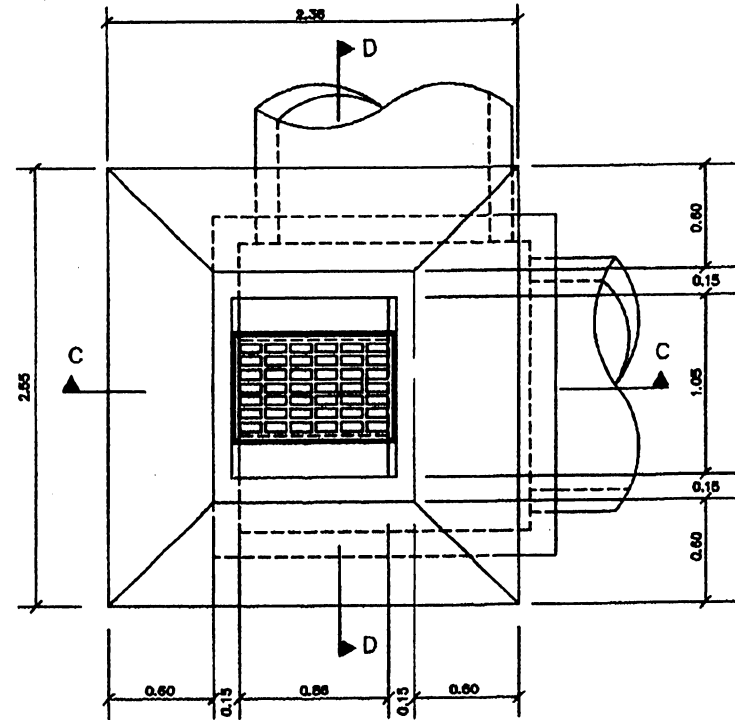
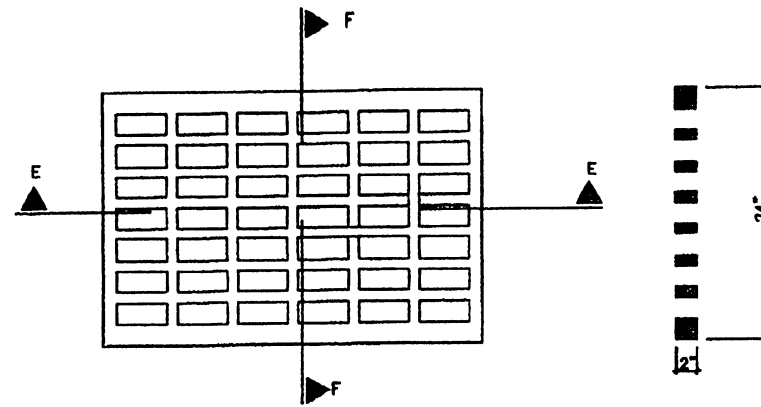


PLAN

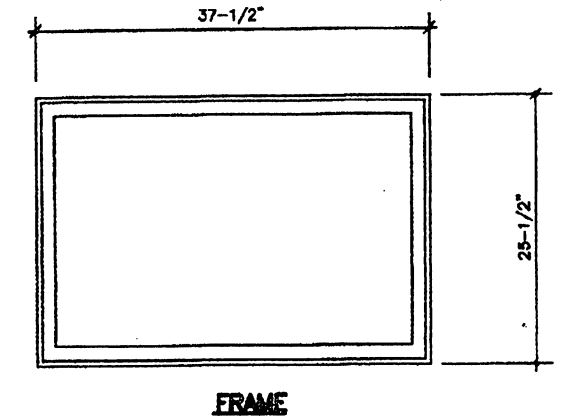


PLAN

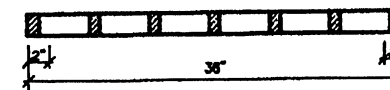


GRATE

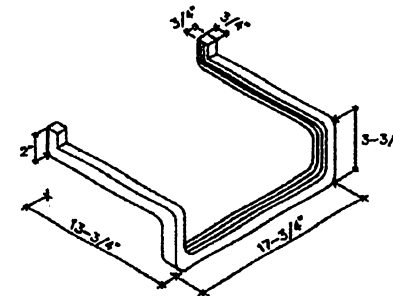
SECTION F-F



FRAME



SECTION E-E



ALUMINUM STEP DETAIL

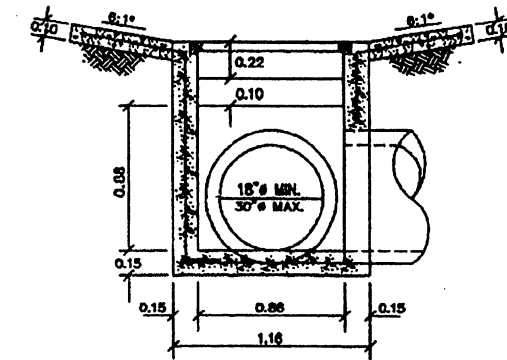
LEGEND:

- = % SUPERELEVATION
- * OR ADJUST TO MEDIAN SLOPE

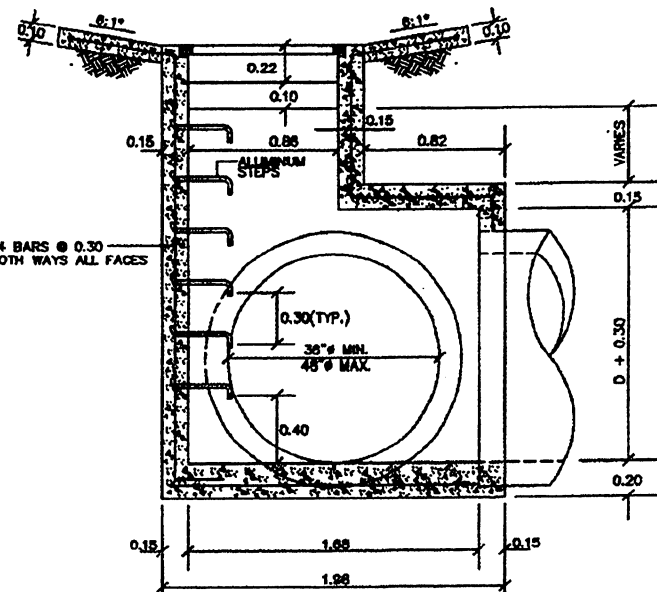
NOTES:

- 1- PORTLAND CEMENT CONCRETE SHALL BE CLASS A.
- 2- REINFORCING STEEL SHALL BE GRADE 60, AASHTO M-31 OR M-31M.
- 3- NO ALUMINUM STEPS WILL BE REQUIRED WHERE DEPTH IS 1.00 OR LESS. INSTALL ONE STEP .40 ABOVE FLOOR WHEN DEPTH IS MORE THAN 1.00 BUT LESS THAN 1.50. WHERE DEPTH IS MORE THAN 1.50, STEPS SHALL BE EVENLY SPACED AT .30 INTERVALS FROM .40 ABOVE FLOOR TO WITHIN .60 OF THE TOP OF THE BOX. PLACE STEPS IN WALL WITHOUT PIPE AND ADJACENT TO FRAME OPENING.
- 4- INLET SHALL BE CAST IN PLACE. NO PRE-CAST ALTERNATES ARE ALLOWED. CONSTRUCTION OF CANTILEVER REINFORCED CONCRETE LEDGES SHOWN ON SECTION B-B AND D-D ARE MANDATORY.
- 5- ALL GRAY CAST IRON PRODUCTS USED IN THE "DR" SERIES OF THE STANDARD DRAWINGS MUST BE FROM APPROVED MANUFACTURERS AND THE APPROVED PRODUCTS IDENTIFIED BY PRODUCT NUMBER OR CATALOG NUMBER LISTED IN THE APPROVED LIST OF MANUFACTURERS AND PRODUCTS CONTAINED IN THE FIRST PAGE OF THE "DR" SERIES.

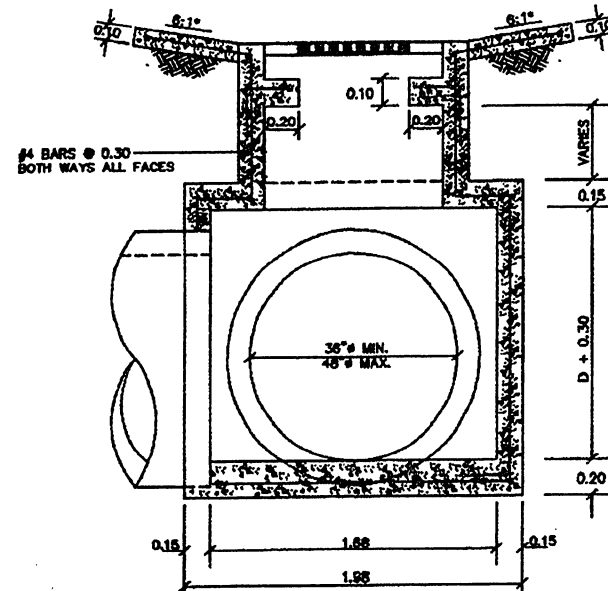
EFFECTIVE DATE: DECEMBER 1998



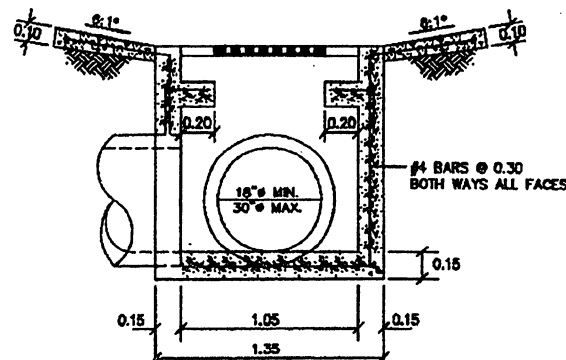
SECTION A-A



SECTION C-C



SECTION D-D



SECTION B-B

FOR PIPES FROM 18" TO 30"

FOR PIPES FROM 36" TO 48"

COMMONWEALTH OF PUERTO RICO DEPARTMENT OF TRANSPORTATION AND PUBLIC WORKS HIGHWAY AND TRANSPORTATION AUTHORITY			
DRAINAGE INLET TYPE 5 (DEPRESSED GRASS MEDIAN)		RECOMMENDED BY: <i>[Signature]</i> DESIGN AREA DIRECTOR DATE: 12-7-98 APPROVED BY: <i>[Signature]</i> EXECUTIVE DIRECTOR DATE: 2-21-98 APPROVED BY: <i>[Signature]</i> DIV. ADM. FINANCIAL DIVISION DATE: 12-7-98	
DATE	REVISION	BY	STD. DR
05-05-1998	GRATE DIMENSIONS	LV.	DWG. 16 OF 40
12-1998	DELETE NOTES, ADD NOTES 4 & 5	LV.	