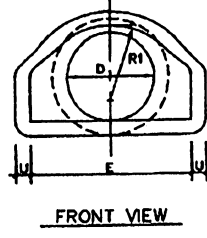
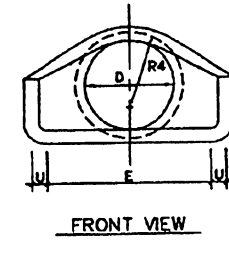


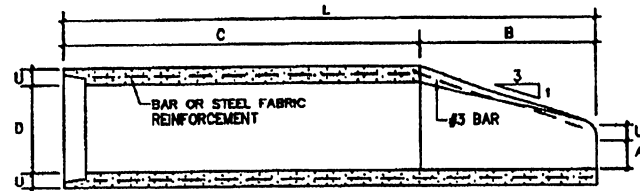
FRONT VIEW



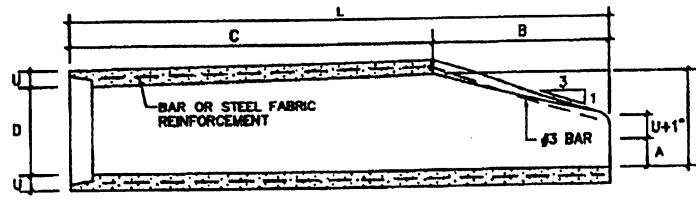
FRONT VIEW



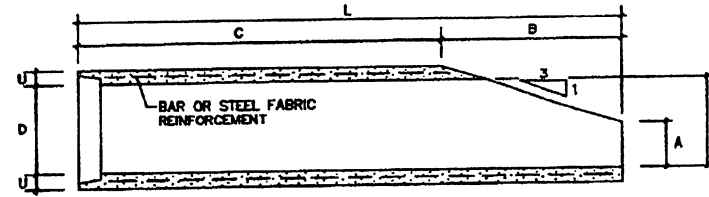
FRONT VIEW



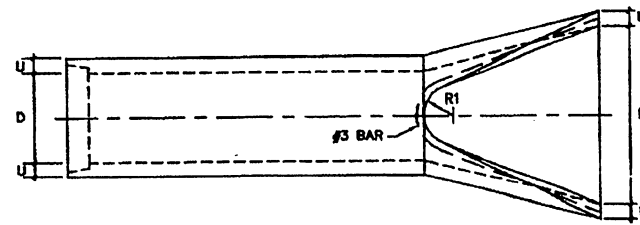
CROSS SECTION AT CENTERLINE



CROSS SECTION AT CENTERLINE

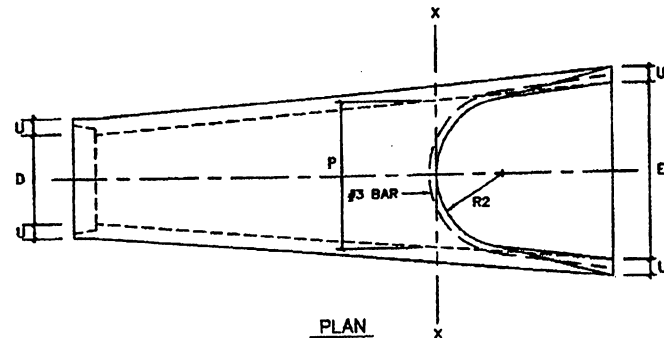


CROSS SECTION AT CENTERLINE



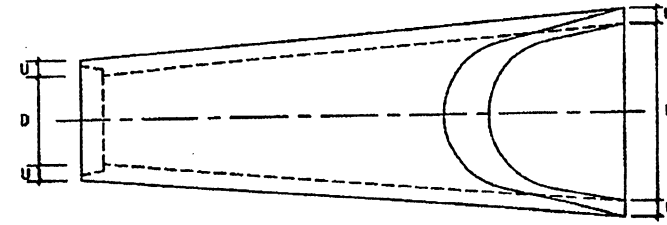
PLAN

TYPE I



PLAN

TYPE II



PLAN

TYPE III

NOTES:

- 1- REINFORCEMENT SHALL CONFORM TO THE REQUIREMENTS OF REINFORCED CONCRETE PIPE OF LIKE DIAMETER CLASS IV AASHTO WALL B M-170 OR M-170M.
- 2- TONGUE END ON INLET END SECTION. GROOVE END ON OUTLET END SECTION.
- 3- IN CASES WHEN THE PIPE IS IN SKEW, THE CONTRACTOR IS RESPONSIBLE TO ADJUST THE GRADING AS REQUIRED.
- 4- FOR RIPRAP AT THE PIPE OUTLETS SEE RIPRAP STANDARD DRAWINGS.
- 5- UNLESS OTHERWISE SPECIFIED IN THE PLANS, THE CONTRACTOR MAY SUPPLY ANY OF THE TYPES SHOWN.

EFFECTIVE DATE: DECEMBER 1998

END SECTION TYPE I

TABLE OF DIMENSIONS (INCHES)							
D	U	A	B	C	L	E	R1
12	2	4	24	48-7/8	72-7/8	24	4
15	2-1/4	6	27	48	73	30	6
18	2-1/2	9	27	46	73	36	7-1/2
21	2-3/4	9	36	37	73	42	5
24	3	9-1/2	43-1/2	30	73-1/2	48	8
27	3-1/4	10-1/2	48	25-1/2	73-1/2	54	9
30	3-1/2	12	54	19-3/4	73-3/4	60	8
33	3-3/4	13-1/2	58-1/2	37-1/2	98	66	9
36	4	15	63	33	98	72	11

END SECTION TYPE II

TABLE OF DIMENSIONS (INCHES)										
D	U	A	B	C	L	E	F	AT X-X ONLY		R2
								P	R1	
12	2	4	24	48-7/8	72-7/8	24	13	10-1/16	10-1/8	9
15	2-1/4	6	27	46	73	30	18	24-3/16	12-1/2	11
18	2-1/2	9	27	46	73	36	19	29	15-1/2	12
21	2-3/4	9	36	37	73	42	22	31-3/8	16-1/2	13
24	3	9-1/2	43-1/2	30	73-1/2	48	25	33-3/16	16-13/16	14
27	3-1/4	10-1/2	48	25-1/2	73-1/2	54	28	18-9/16	17-1/2	14-1/2
30	3-1/2	12	54	21-3/4	73-3/4	60	31	37	18-1/2	15
33	3-3/4	13-1/2	58-1/2	37-1/2	98	66	34	45-3/16	23-3/4	17-1/2
36	4	15	63	33	98	72	37	47-1/2	23-3/16	20

END SECTION TYPE III

TABLE OF DIMENSIONS (INCHES)								
D	U	A	B	C	L	E	F	R4
12	2	7	24	48-7/8	72-7/8	24	13	10-1/8
15	2-1/4	9-1/4	27	46	73	30	16	12-1/2
18	2-1/2	12-1/2	27	46	73	36	19	15-1/2
21	2-3/4	12-3/4	36	37	73	42	22	16-1/8
24	3	13-1/2	43-1/2	24	73-1/2	48	25	16-13/16
27	3-1/4	14-3/4	48-1/2	24	73-1/2	54	28	16-9/16
30	3-1/2	16-1/2	54	18-3/4	73-3/4	60	31	18-1/2
33	3-3/4	18-1/4	58-1/2	37-1/2	98	66	34	23-3/4
36	4	20	63	33	98	72	37	24-5/16

COMMONWEALTH OF PUERTO RICO
DEPARTMENT OF TRANSPORTATION
AND PUBLIC WORKS
HIGHWAY AND TRANSPORTATION AUTHORITY

**DRAINAGE
PRECAST CONCRETE
END SECTION**

RECOMMENDED BY: *[Signature]*
DESIGN AREA DIRECTOR
DATE: *12-1-98*

APPROVED BY: *[Signature]*
EXECUTIVE DIRECTOR
DATE: *12-1-98*

APPROVED BY: *[Signature]*
DIV. ADM. FHWA-PR DIVISION
DATE: *12-1-98*

DATE	REVISION	BY
12-1998	PAGE RENUMBERED	WJ

STD. DR
DWG. 19 of 40