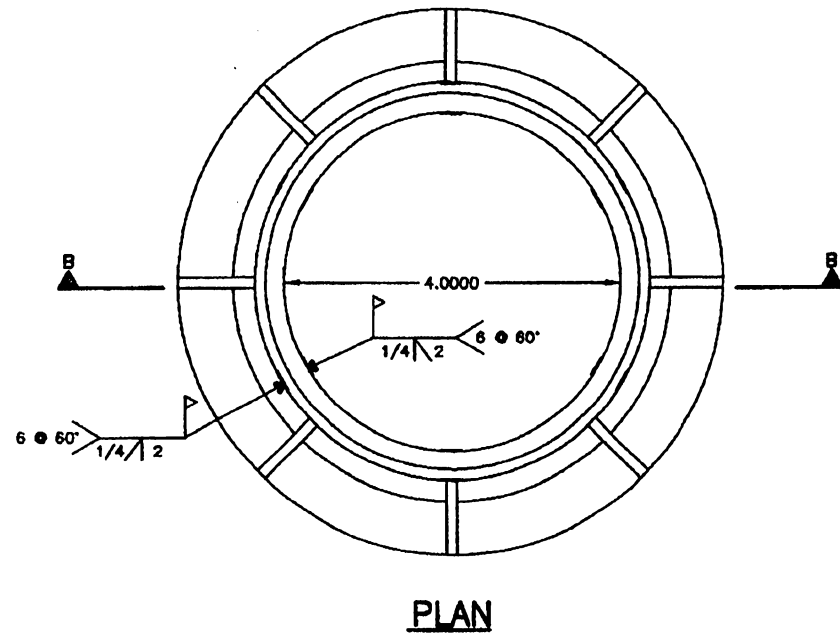
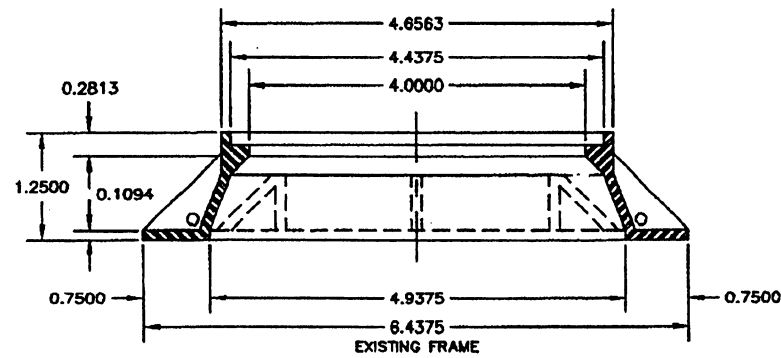


MANHOLE ADJUSTMENT FOR P.R.E.P.A. STANDARD

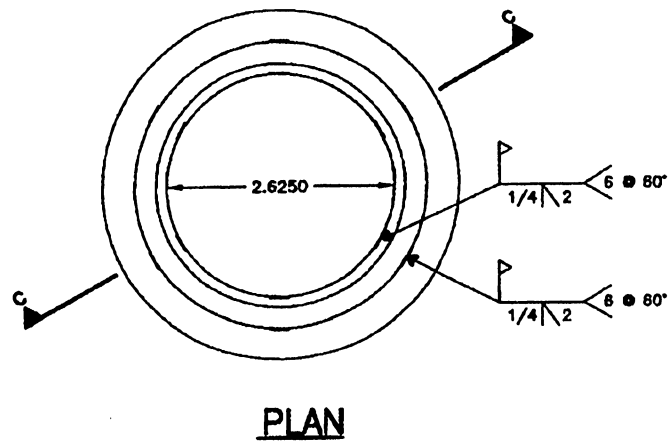


PLAN

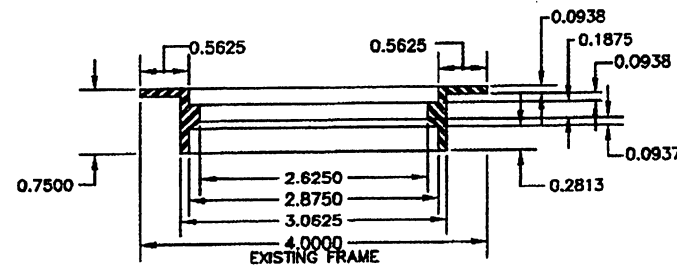


SECTION B-B

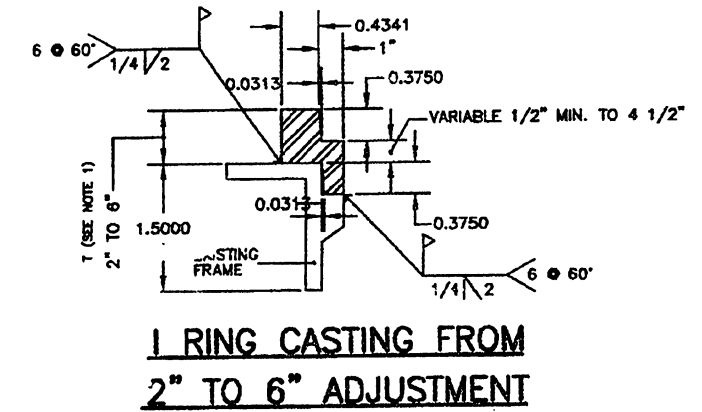
MANHOLE ADJUSTMENT FOR P.R.A.S.A. STANDARD



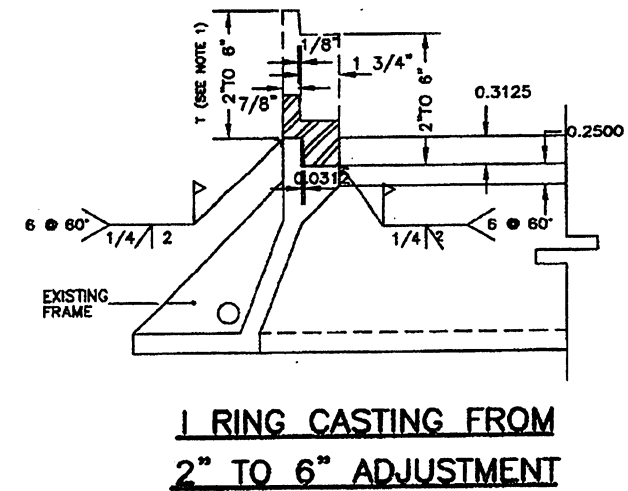
PLAN



SECTION C-C



I RING CASTING FROM  
2" TO 6" ADJUSTMENT



I RING CASTING FROM  
2" TO 6" ADJUSTMENT

NOTES:

1. DIMENSION T SHALL RANGE FROM 2" MIN. TO 6" MAX. IN 1/2" INCREMENTS.
2. RINGS SHALL BE GRAY CAST IRON, AASHTO SPECIFICATION M-105, CLASS 30B.
3. WELDING SHALL COMPLY WITH THE REQUIREMENTS OF THE CURRENT EDITION OF THE AMERICAN WELDING SOCIETY (AWS).
4. ALL GRAY CAST IRON PRODUCTS USED IN THE "DR" SERIES OF THE STANDARD DRAWINGS MUST BE FROM APPROVED MANUFACTURERS AND THE APPROVED PRODUCTS IDENTIFIED BY PRODUCT NUMBER OR CATALOG NUMBER LISTED IN THE APPROVED LIST OF MANUFACTURERS AND PRODUCTS CONTAINED IN THE FIRST PAGE OF THE "DR" SERIES.

EFFECTIVE DATE: DECEMBER 1998

COMMONWEALTH OF PUERTO RICO DEPARTMENT OF TRANSPORTATION AND PUBLIC WORKS HIGHWAY AND TRANSPORTATION AUTHORITY		
DRAINAGE MANHOLE ADJUSTMENTS	RECOMMENDED BY: <i>[Signature]</i> DESIGN AREA DIRECTOR DATE: 12-7-98	APPROVED BY: <i>[Signature]</i> EXECUTIVE DIRECTOR DATE: 8-21-98
	APPROVED BY: <i>[Signature]</i> DIV. ADM. FHWA-PR DIVISION DATE: 12-7-98	
	DATE: 12-1998	REVISION: ADD NOTE 4
STD. DR DWG. 24 OF 40		