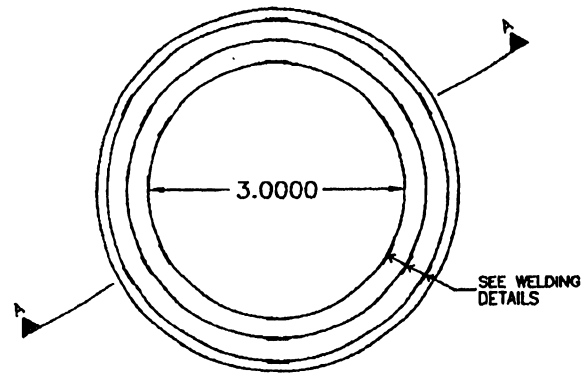
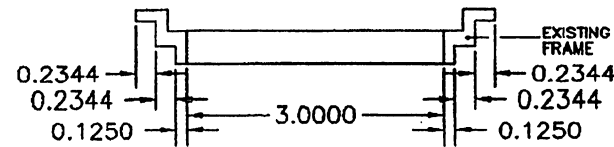


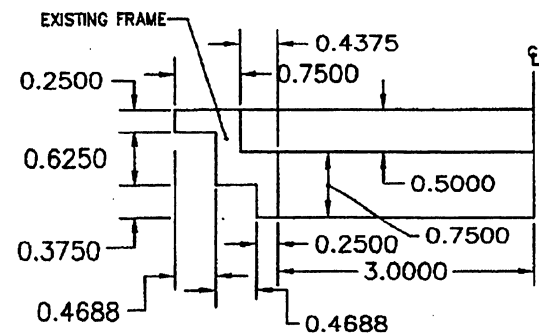
MANHOLE ADJUSTMENT FOR P.R.H.T.A. STANDARD



PLAN

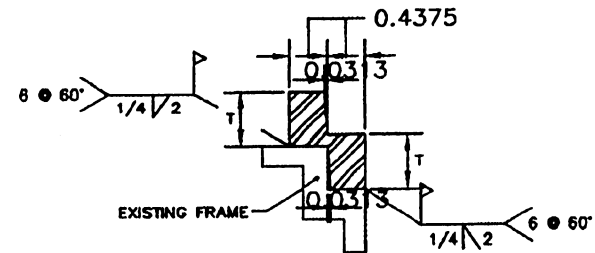


SECTION A-A

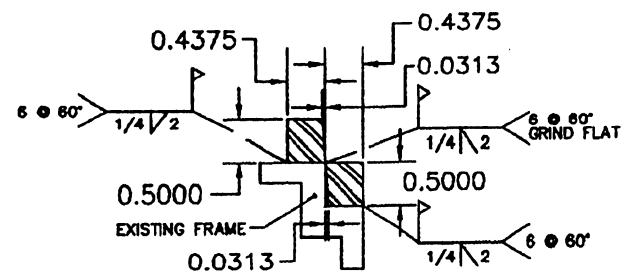


EXISTING FRAME

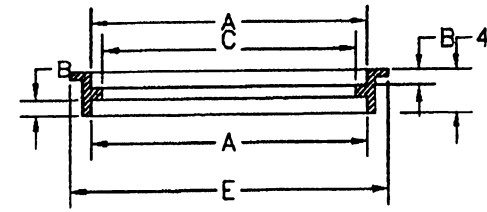
STYLE "A" FRAME



L RING CASTING FROM
2 1/2" T 6" ADJUSTMENT

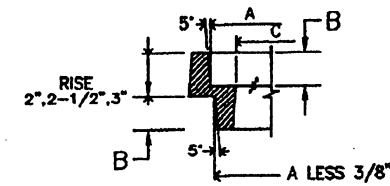


2 RING CASTING 2" ADJUSTMENT



STYLE "B" FRAME

A	B	C	E
22-5/8"	1-1/2"	20-1/2"	26-1/2"
25-5/8"	1-1/2"	23-1/2"	29-1/2"
28-5/8"	1-1/2"	26-1/2"	32-1/2"
34-5/8"	1-1/2"	32-1/2"	38-1/2"
40-3/8"	1-1/2"	38-1/2"	44-1/2"
46-1/4"	1-1/2"	44-1/2"	50-1/2"



FRAME ADJUSTING RING

TABLE OF DIMENSIONS
(INCHES)

A	B	C
22-3/8"	1-1/2"	20"
23-3/8"	1-1/2"	21"
24-3/8"	1-1/2"	22"
26-3/8"	1-1/2"	24"
29-3/8"	1-1/2"	27"
32-3/8"	1-1/2"	30"
34-3/8"	1-1/2"	32"
40-3/8"	1-1/2"	38"
44-3/8"	1"	42"
46-1/4"	1-1/2"	44"

NOTES:

1. DIMENSION T SHALL RANGE FROM 2" MIN. TO 6" MAX. IN 1/2" INCREMENTS.
2. RINGS SHALL BE GRAY CAST IRON, AASHTO SPECIFICATION M-105, CLASS 30B.
3. WELDING SHALL COMPLY WITH THE REQUIREMENTS OF THE CURRENT EDITION OF THE AMERICAN WELDING SOCIETY (AWS).
4. ALL GRAY CAST IRON PRODUCTS USED IN THE "DR" SERIES OF THE STANDARD PLANS MUST BE FROM APPROVED MANUFACTURERS AND THE APPROVED PRODUCTS IDENTIFIED BY PRODUCT NUMBER OR CATALOG NUMBER LISTED IN THE APPROVED LIST OF MANUFACTURERS AND PRODUCTS CONTAINED IN THE FIRST PAGE OF THE "DR" SERIES.

EFFECTIVE DATE: DECEMBER 1998

COMMONWEALTH OF PUERTO RICO DEPARTMENT OF TRANSPORTATION AND PUBLIC WORKS HIGHWAY AND TRANSPORTATION AUTHORITY		
DRAINAGE MANHOLE ADJUSTMENTS		RECOMMENDED BY: <i>[Signature]</i> DESIGN AREA DIRECTOR DATE: 12-7-98
APPROVED BY: <i>[Signature]</i> EXECUTIVE DIRECTOR DATE: 12-7-98		APPROVED BY: <i>[Signature]</i> DIV. ADM. FHMA-PR DIVISION DATE: 12-7-98
DATE	REVISION	BY
10-1998	ADD NOTE 4	L.V.
STD. DWG.	DR	25 OF 40