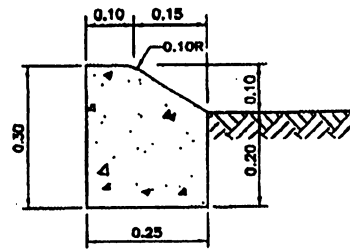
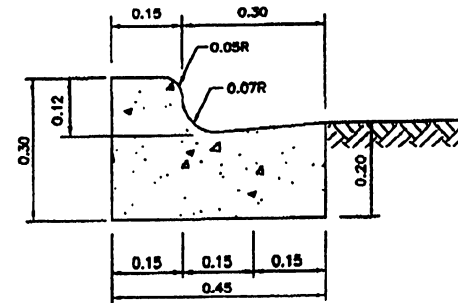


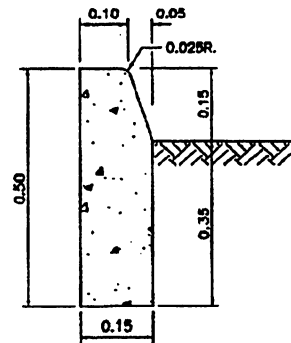
TYPE - A



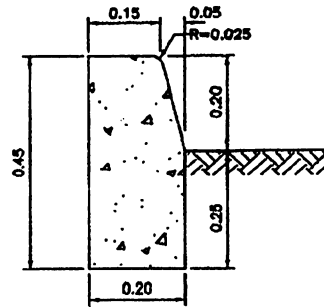
TYPE - B



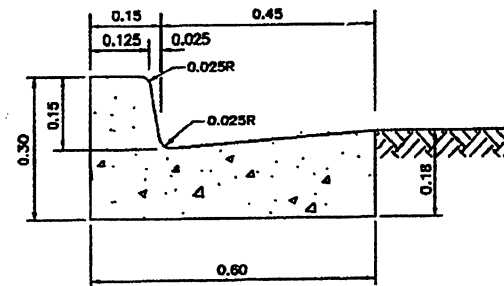
TYPE - C



TYPE - D



TYPE - E



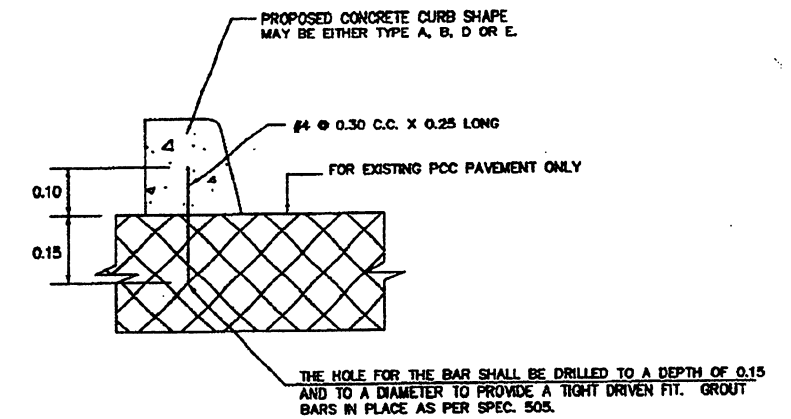
TYPE - F

MOUNTABLE CURBS

BARRIER CURBS

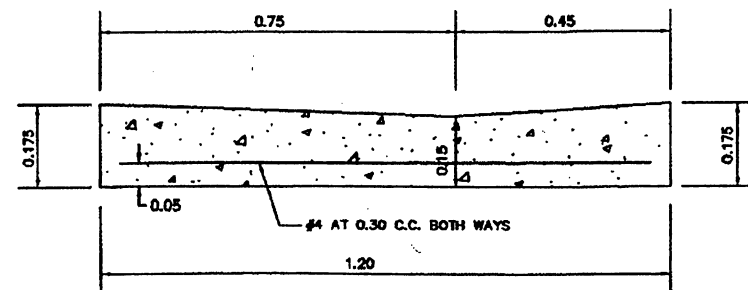
NOTES:

- 1- PORTLAND CEMENT CONCRETE SHALL BE CLASS A.
- 2- CURBING SHALL BE CONSTRUCTED IN SECTIONS HAVING A UNIFORM LENGTH OF 3 METERS WITHOUT THE NEED OF ANY JOINT FILLER. SECTIONS SHALL BE SEPARATED BY OPEN JOINTS 0.003 WIDE. WHERE THE CURBING IS CONSTRUCTED ADJACENT TO CONCRETE PAVEMENT, THE OPEN JOINTS IN THE CURBING SHALL MATCH THE CONTRACTION JOINTS IN THE PAVEMENT.
- 3- FORMS SHALL BE OF METAL AND SHALL EXTEND FOR THE FULL DEPTH OF THE CONCRETE. WOODEN FORMS MAY BE USED, WHEN AUTHORIZED BY THE ENGINEER, ON SHORT RADIUS CURVES SUCH AS AT STREET INTERSECTIONS AND AT SUCH OTHER LOCATIONS FOR WHICH CURVED METAL FORMS MAY NOT BE AVAILABLE. ALL FORMS SHALL BE FREE FROM WARP AND OF SUFFICIENT STRENGTH TO RESIST THE PRESSURE OF THE CONCRETE WITHOUT DISPLACEMENT. BRACING AND STAKING OF FORMS SHALL BE SUCH THAT THE FORMS REMAIN IN BOTH HORIZONTAL AND VERTICAL ALIGNMENT UNTIL THEIR REMOVAL. ALL FORMS SHALL BE CLEANED AND COATED WITH AN APPROVED FORM RELEASE AGENT OR FORM OIL BEFORE CONCRETE IS PLACED. DIVIDER PLATES SHALL BE OF METAL. FORMS SHALL CONFORM TO THE SPECIFIED RADIUS WHEN PLACED ON CURVES.

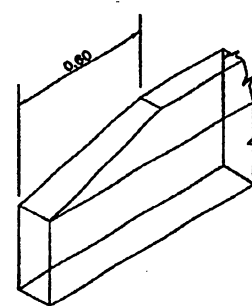


CURB CONSTRUCTION OVER AN EXISTING PAVEMENT

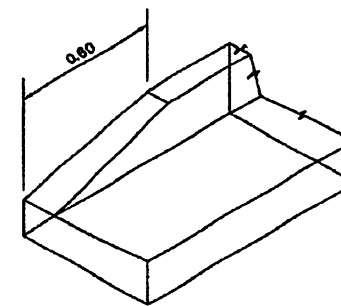
REINFORCEMENT STEEL IN ANY CURB, CURB & GUTTER AND GUTTER IS A SUBSIDIARY OBLIGATION



SHALLOW CONCRETE GUTTER



FOR TYPES A, B, D, AND E



FOR TYPES C, AND F

NOTE: THE TRANSITION LENGTH APPLIES BOTH WHEN THE CURB OR CURB AND GUTTER IS REDUCED TO ZERO OR WHEN A TRANSITION IS MADE FROM ONE TYPE TO ANOTHER.

CURBS AND CURB AND GUTTERS END SECTION

EFFECTIVE DATE: DECEMBER 1998

COMMONWEALTH OF PUERTO RICO
DEPARTMENT OF TRANSPORTATION
AND PUBLIC WORKS
HIGHWAY AND TRANSPORTATION AUTHORITY

**DRAINAGE
TYPICAL CURBS**

RECOMMENDED BY:
[Signature]
DESIGN AREA DIRECTOR
DATE: 7-28-98

APPROVED BY:
[Signature]
EXECUTIVE DIRECTOR
DATE: 8-21-98

APPROVED BY:
[Signature]
DIV. ADM. FHWA-PR DIVISION
DATE: 12-7-98

DATE	REVISION	BY
12-1998	PAGE RENUMBERED	I.V.

STD. DWG. DR 26 OF 40