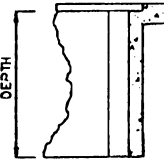
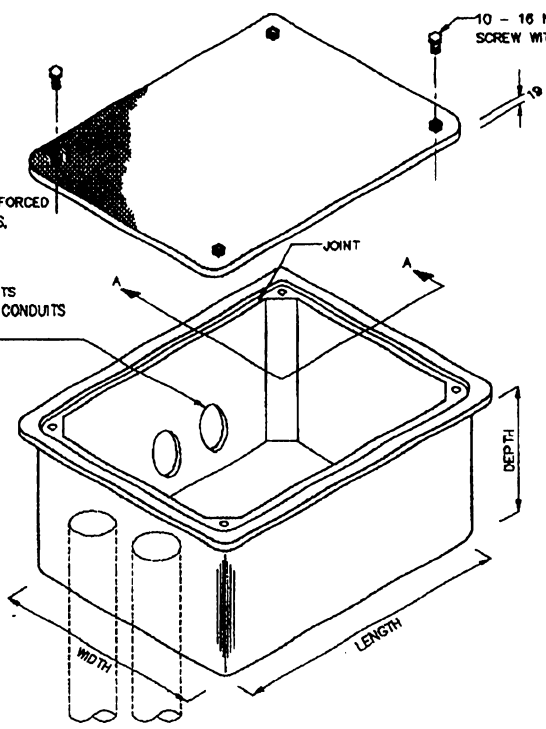


COVER:
MATERIAL: POLYMER CONCRETE REINFORCED WITH HIGHLY INTERLACED FIBERGLASS, CAST IRON OR CONCRETE

INLET OR OUTLET FOR CONDUITS
(DIAMETER AND QUANTITY OF CONDUITS MUST BE SPECIFIED)



SECTION A-A

NOTES:

- 1- UNLESS OTHERWISE INDICATED, PULL BOX SIZE "A" SHALL BE INCLUDED AS A SUBSIDIARY OBLIGATION UNDER ALL LIGHTING STANDARDS PAY ITEMS. THIS INCLUDES BUT IS NOT LIMITED TO THE COMPLETE CONNECTION AS INDICATED ON DRAWING No.4
- 2- THIS PULL BOX MUST BE TOTALLY BURIED AND WITHSTAND A DESIGN LOAD 15,000 POUNDS TOTAL

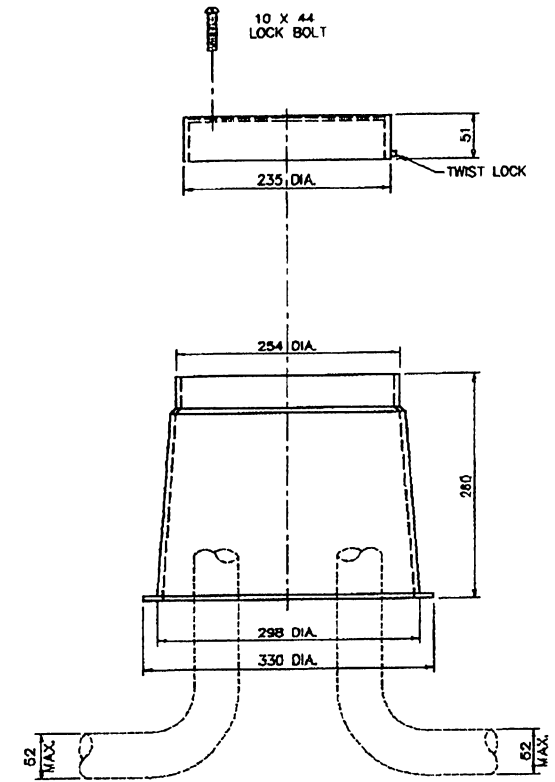
| OPEN BASE BOX (INSIDE DIMENSION) | | | |
|-------------------------------------|--------|-------|-------|
| DESIGNATION | LENGTH | WIDTH | DEPTH |
| A | 457 | 203 | 457 |
| B | 432 | 254 | 305 |
| C | 254 | 254 | 305 |
| D | 483 | 229 | 305 |
| E | 660 | 330 | 457 |
| F | 762 | 457 | 610 |

NOTES:
DIMENSIONS ARE MINIMUM, INSIDE BOX.

PULL BOX FOR LIGHTING CIRCUITS
NOT TO SCALE

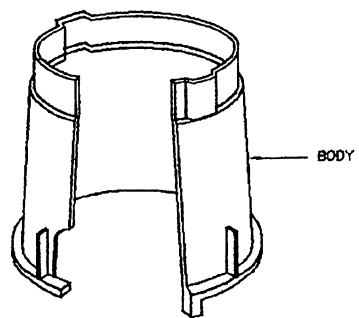
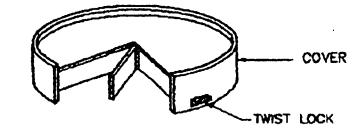
PULL BOX MATERIAL:

MATERIAL : POLYMER CONCRETE REINFORCED WITH HIGHLY INTERLACED FIBERGLASS OR HEAVY-WAVE FIBERGLASS, CAST IRON, ALUMINUM OR CONCRETE.



PULL BOX MATERIAL:
MATERIAL : HIGH DENSITY POLYMER.
COLOR : GREEN.

ALTERNATE PULL BOX FOR LIGHTING CIRCUITS
NOT TO SCALE



NOTES:

- 1- THIS PULL BOX SHALL BE USE AS AN ALTERNATE FOR A MAXIMUM OF: ONE LIGHTING CIRCUIT WITH #2 AWG MAXIMUM CONDUCTOR GAGE, THREE 52 CONDUITS.
- 2- ALTERNATE PULL BOX SHALL BE CARSON-BROOKS MODEL 910 OR APPROVED EQUAL.

EFFECTIVE DATE: JUNE 1996

| | | | |
|---|----------|---------------------------------------|--------------------|
| COMMONWEALTH OF PUERTO RICO DEPARTMENT OF TRANSPORTATION AND PUBLIC WORKS HIGHWAY AND TRANSPORTATION AUTHORITY | | | |
| PULL BOX FOR LIGHTING CIRCUITS DETAIL | | RECOMMENDED BY: <i>[Signature]</i> | DATE: 10/20/96 |
| | | DESIGN AREA DIRECTOR | |
| | | APPROVED BY: <i>[Signature]</i> | |
| | | EXECUTIVE DIRECTOR | |
| | | APPROVED BY: <i>[Signature]</i> | |
| | | DIST. ENG. SUPERINT. P.R.E.P.A. | DATE: 20 SEPT 1996 |
| | | APPROVED BY: <i>[Signature]</i> | DATE: 20 SEPT 1996 |
| | | DIV. ADM. FHWA-PR DIVISION | |
| DATE | REVISION | BY | |
| | | | STD. DWG. 6 OF 17 |