

STREET LIGHTING LUMINAIRE STANDARD SPECIFICATION

THE LUMINAIRE SHALL CONTAIN A COMPLETELY PREWIRED INTEGRAL BALLAST AND OPTICAL ASSEMBLY THAT SHALL PROVIDE AN IES DISTRIBUTION TYPE III

LUMINAIRE SHALL INCLUDE A PRECISION DIE-CAST ALUMINUM TOP HOUSING, OPTICAL DOOR WITH REFRACTOR AND HINGED, AND REMOVABLE POWER / MODULE DOOR.

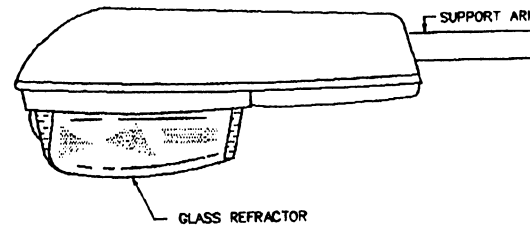
LUMINAIRE SHALL CONTAIN A ONE-PIECE PIPE CLAMP IN TOP HOUSING AND CAPABLE OF ADAPTING TO 1 1/4" TO 2" PIPE.

LUMINAIRE SHALL CONTAIN A HEAT/IMPACT-RESISTANT GLASS REFRACTOR.

LUMINAIRE SHALL CONTAIN A PRECISION FORMED ALUMINUM REFLECTOR WITH HIGHLY POLISHED ANODIZED ALUMINUM.

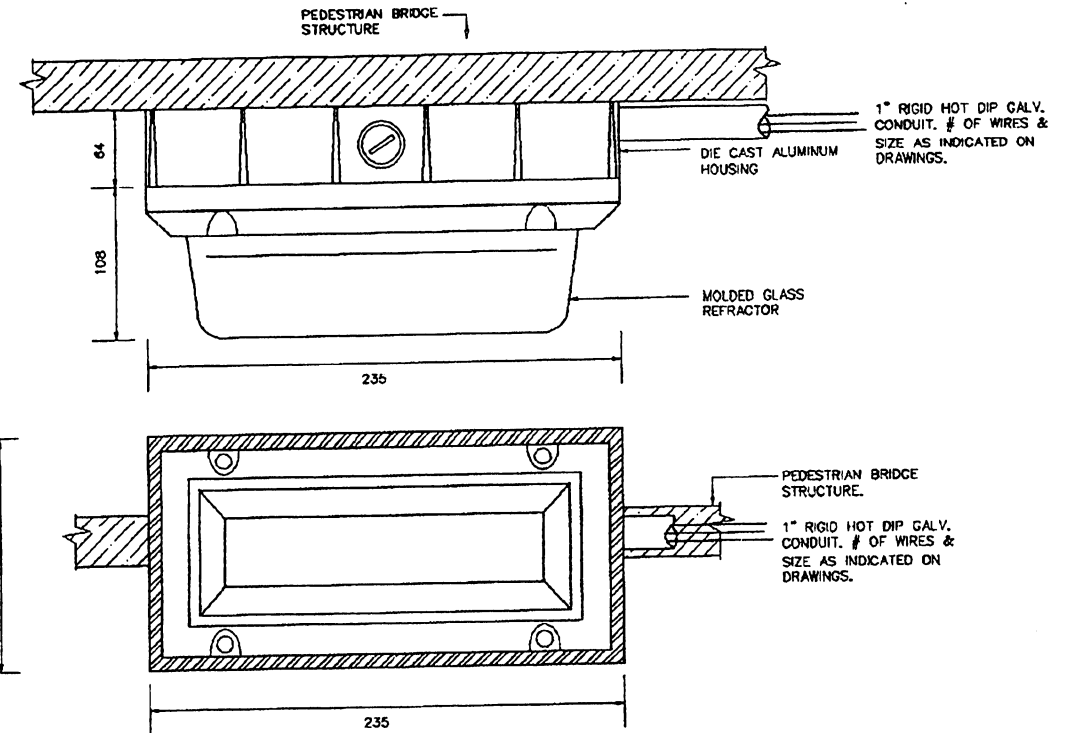
LUMINAIRE SHALL CONTAIN AN ADJUSTABLE HEAVY-DUTY MOULD BASE SOCKET WITH NICKLE-PLATED TAPERED BRASS SPLIT-SHELL LAMP GRIPS AND A FREE-FLOATING SPRING LOADED CENTER CONTACT.

NO PHOTOCELL SOCKET REQUIRED.



LAMP SPECIFICATION				LIGHTING FIXTURE DISTRIBUTION SPECIFICATION	
LAMP WATTAGE	TYPE	LUMENS	ANSI CODE	DISTRIBUTION	REFRACTOR CONTROL
100 W	H.P.S.	9500	SS4SB-100	TYPE III OR AS INDICATED	SEMI-CUT OFF
200 W	H.P.S.	22,000	S68MN-200	TYPE III OR AS INDICATED	SEMI-CUT OFF

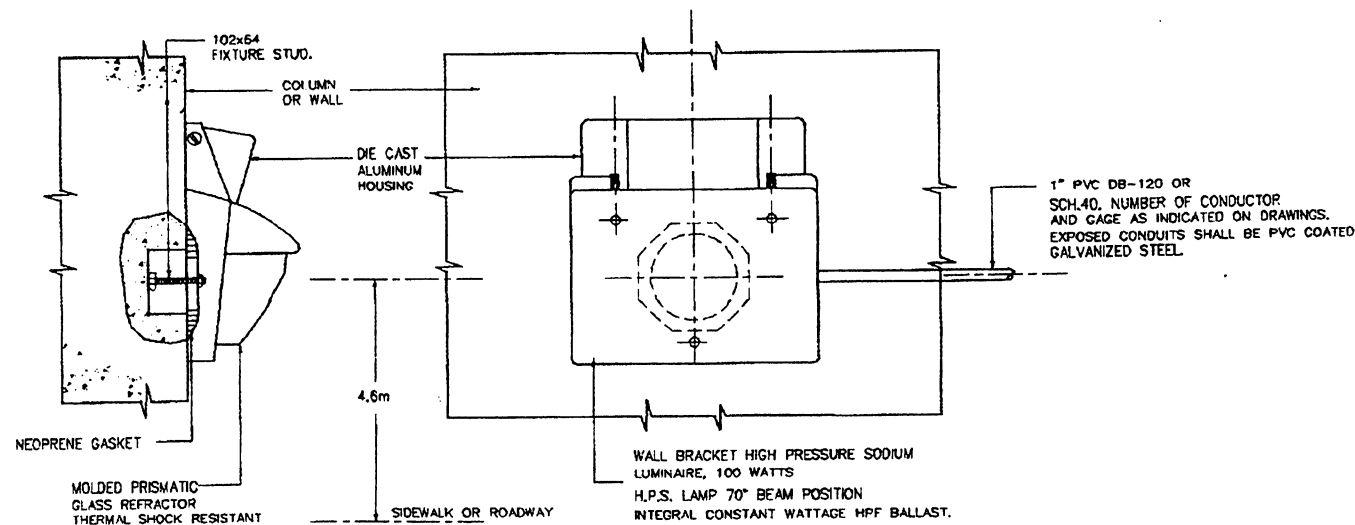
STREET LIGHTING LUMINAIRE STANDARD



PEDESTRIAN BRIDGE LUMINAIRE STANDARD SPECIFICATION

H.P.S. LOW PROFILE CEILING MOUNTED LUMINAIRE, WATTAGE AS INDICATED ON DRAWING DIE CAST ALUMINUM HOUSING WITH STAINLESS STEEL HARDWARE, STAINLESS STEEL WIRE GRID GUARDED REFRACTOR. LIGHTING FIXTURES SHALL BE ATTACHED TO STRUCTURE USING "U" BOLTS OR AS RECOMMENDED BY MANUFACTURER.

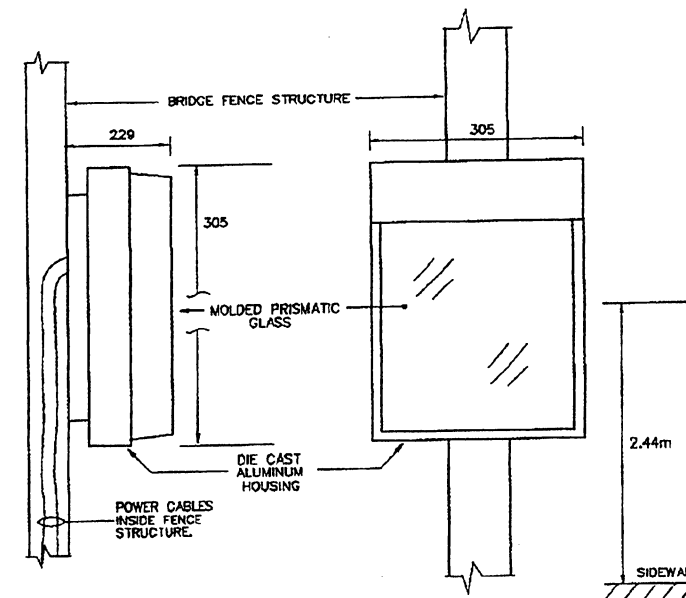
PEDESTRIAN BRIDGE LUMINAIRE STANDARD



UNDERPASS LUMINAIRE STANDARD SPECIFICATION

WALL TYPE LUMINAIRE 100 W H.P.S., 120V RU OUTDOOR LAMP ANSI CODE SS 4SB-100(55V), DIE CAST CORROSION RESISTANT ALUMINUM HOUSING WITH BAKED-ON ENAMEL FINISH, STAINLESS STEEL HARDWARE, STAINLESS STEEL WIRE GRID GUARDED REFRACTOR.

UNDERPASS LUMINAIRE STANDARD



BRIDGE FENCE LUMINAIRE STANDARD SPECIFICATION

H.P.S. LOW PROFILE WALL MOUNTED LUMINAIRE, WATTAGE AS INDICATED ON DRAWINGS. DIE CAST ALUMINUM HOUSING WITH STAINLESS STEEL HARDWARE, STAINLESS STEEL WIRE GRID GUARDED REFRACTOR. LIGHTING FIXTURE SHALL BE ATTACHED TO STRUCTURE USING "U" BOLTS OR AS RECOMMENDED BY MANUFACTURER.

BRIDGE FENCE LUMINAIRE STANDARD

EFFECTIVE DATE: JUNE 1996

COMMONWEALTH OF PUERTO RICO
DEPARTMENT OF TRANSPORTATION AND PUBLIC WORKS
HIGHWAY AND TRANSPORTATION AUTHORITY

UNDERPASS AND PEDESTRIAN BRIDGE STANDARD

RECOMMENDED BY: [Signature]
DESIGN AREA DIRECTOR DATE: Aug. 20 1996
APPROVED BY: [Signature]
EXECUTIVE DIRECTOR DATE: [Signature]
APPROVED BY: [Signature]
DIST. ENG. SUPERINT. P.R.E.P.A. DATE: 20 SEP 1996
APPROVED BY: [Signature]
DIV. ADM. FHWA-PR DIVISION DATE: [Signature]

DATE	REVISION	BY	STD. DWG.	LS
				8 OF 17