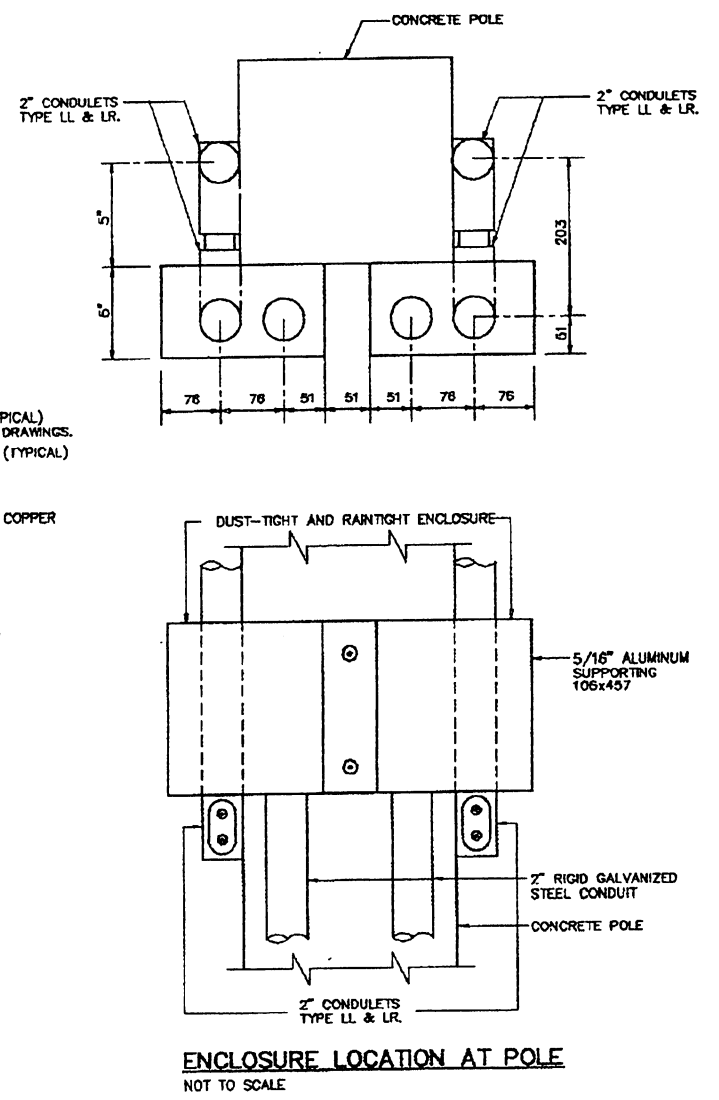
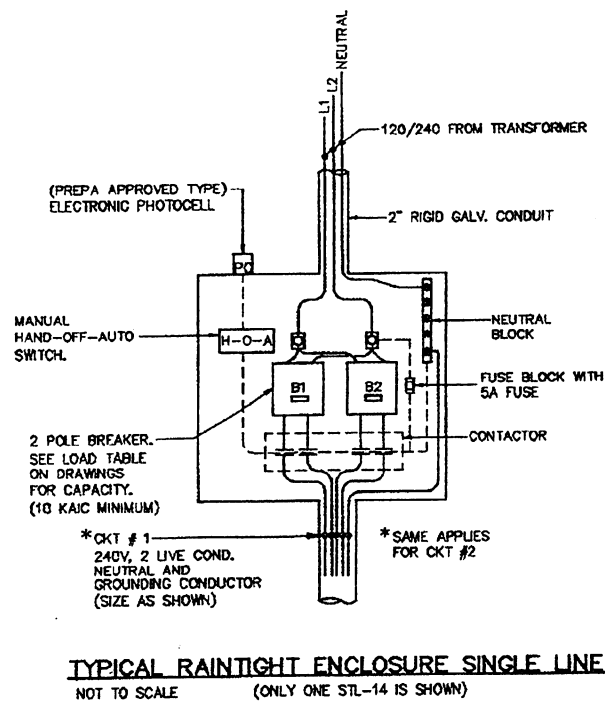
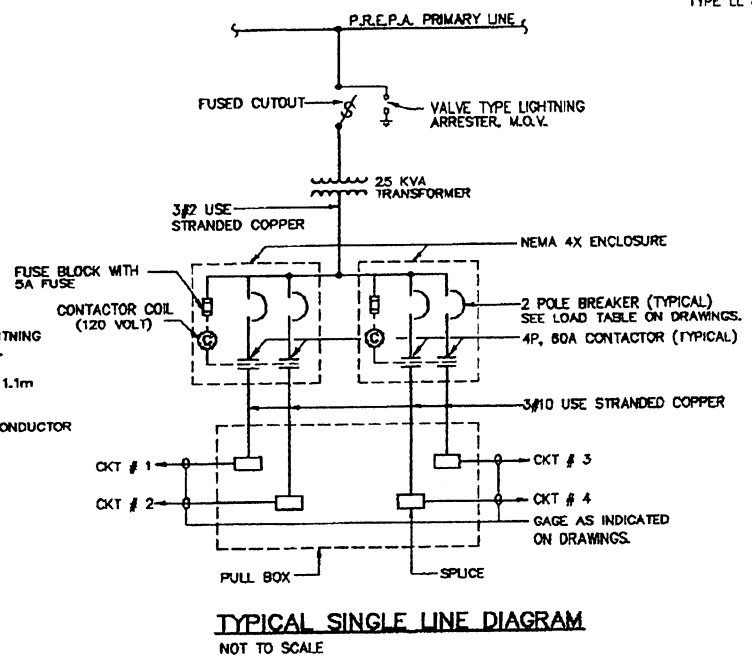
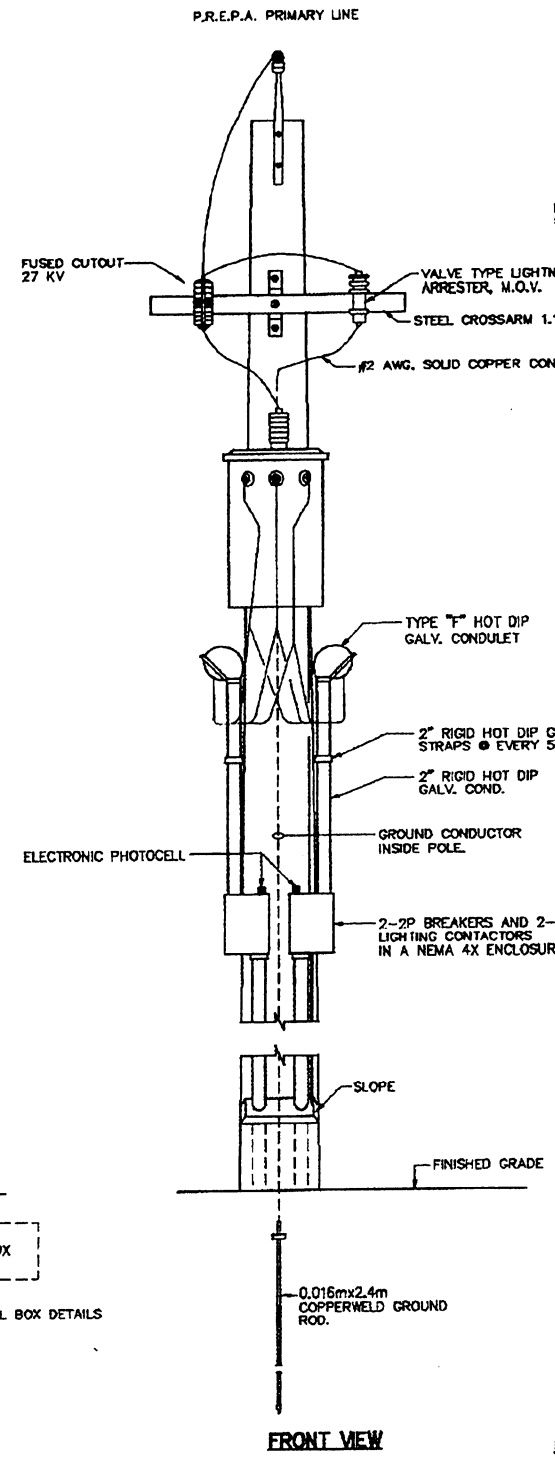
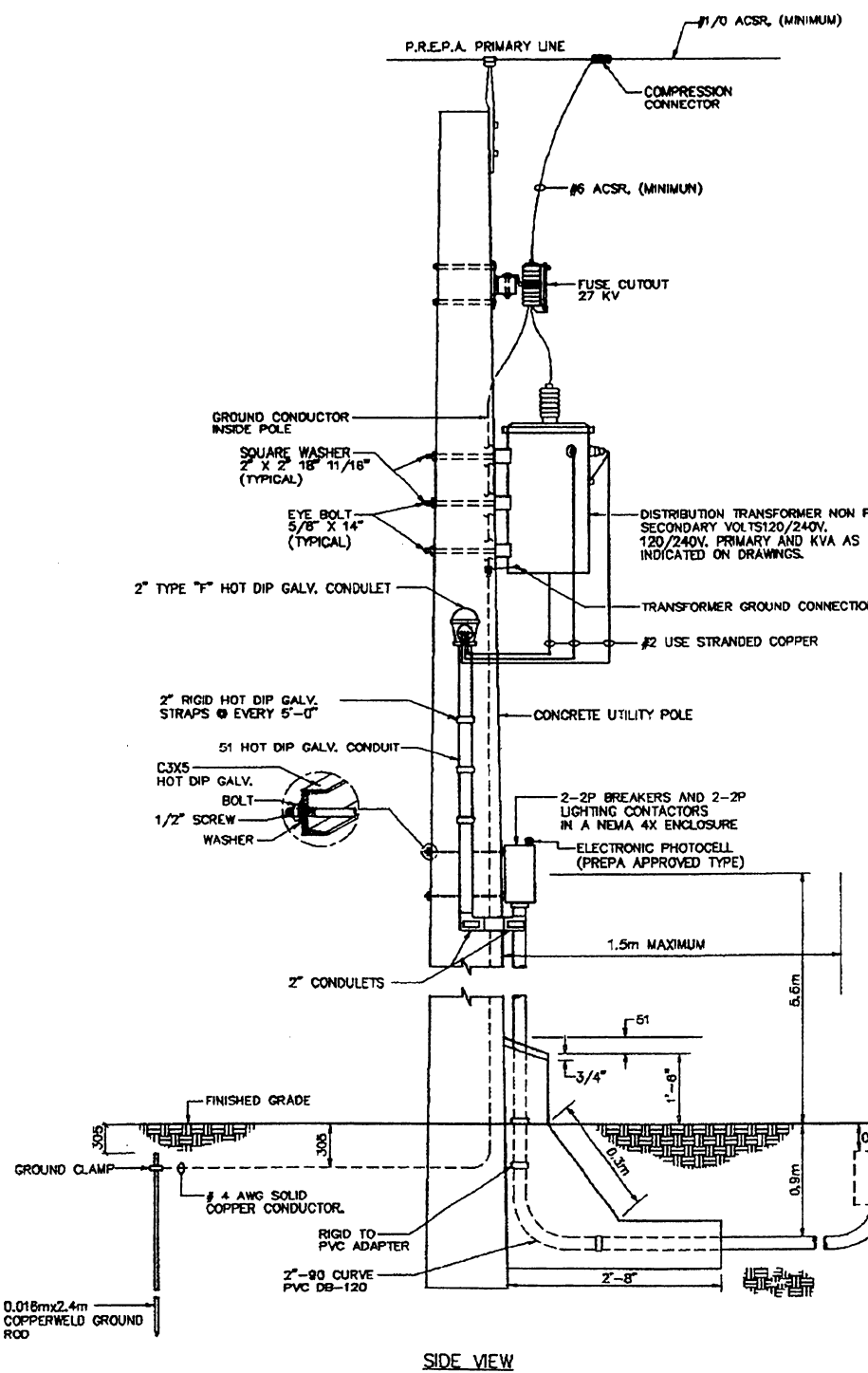


SUBSTATION PROTECTION EQUIPMENT CAPACITIES TABLE					
TRANSFORMER KVA		25			
VOLTAGE OF CONNECTION (KV)		2.4	4.8	7.62	
CUTOUT					
AMP	KV	FUSE	15 E	7 E	5 E
100	27	INTERRUPTING CAPACITY (RMS)	14,000	10,000	8,500
M.O.V. LIGHTING ARRESTER (KV)			3	6	10

VOLTAGE REGULATION TABLE			
SYSTEM	SECONDARY VOLTAGE	2-1/2 % DERIVATIONS (TOPS)	
		OVER NOMINAL VOLTAGE	BELOW NOMINAL VOLTAGE
13.2 KV.	120/240 V.	2	2
8.32 KV OR LESS	120/240 V.	0	4



EFFECTIVE DATE: JUNE 1996

COMMONWEALTH OF PUERTO RICO
DEPARTMENT OF TRANSPORTATION AND PUBLIC WORKS
HIGHWAY AND TRANSPORTATION AUTHORITY

POLE MOUNTED SUBSTATION STANDARD-I

RECOMMENDED BY: [Signature]
DESIGN AREA DIRECTOR
DATE: 8/22/96
APPROVED BY: [Signature]
EXECUTIVE DIRECTOR
DATE: [Signature]
APPROVED BY: [Signature]
DIST. ENG. SUPERINT. P.R.E.P.A.
DATE: 8/22/96
APPROVED BY: [Signature]
DIV. ADM. FHWA-PR DIVISION
DATE: [Signature]

DATE	REVISION	BY

STD. DWG. LS 9 OF 17

- IMPORTANT NOTES**
- SEE LOAD CALCULATION TABLE (ON DRAWINGS) FOR CIRCUIT BREAKERS CAPACITY.
 - BREAKERS ENCLOSURE (STL-14) SHALL BE NEMA 4X.
 - SEE LEGEND AND PLANS FOR CONDUCTOR CAPACITY.

POLE MOUNTED SUBSTATION
NOT TO SCALE (PER P.R.E.P.A. STL-12)