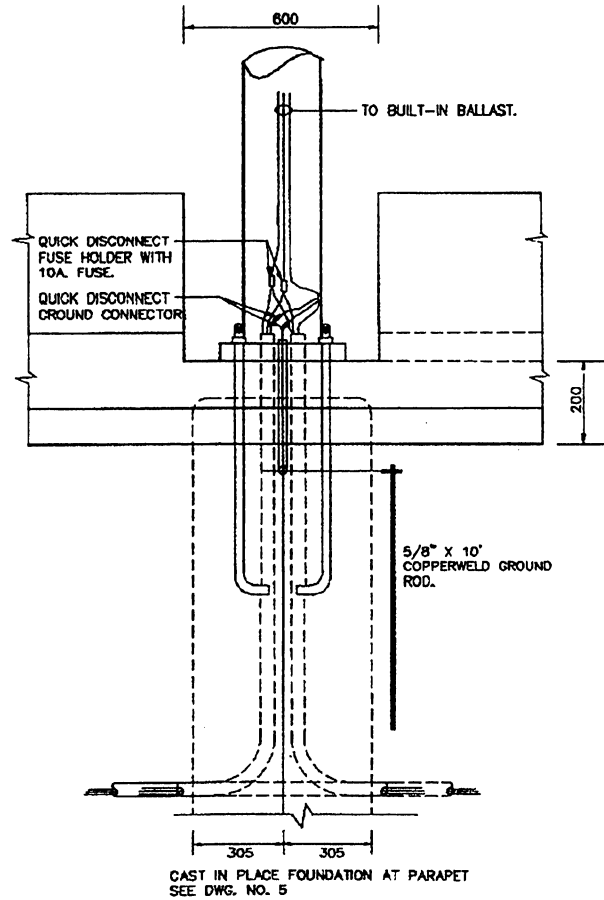
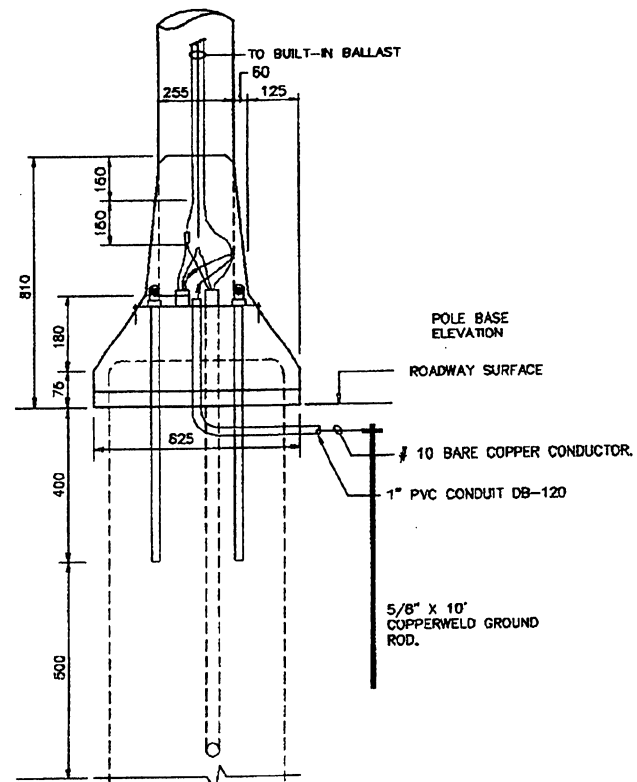


**PLAN VIEW**  
NOT TO SCALE



**ELEVATION**  
NOT TO SCALE



**END VIEW**  
NOT TO SCALE

**NOTES:**

- 1- UNLESS OTHERWISE INDICATED, POLES SHALL BE FED WITH ALTERNATE CIRCUIT. EACH CIRCUIT SHALL RUN IN SEPARATE CONDUIT.
- 2- FOR POLE FOUNDATION & ANCHOR DETAIL SEE DRAWING NO. 5.
- 3- UNLESS OTHERWISE INDICATED, POLES INSTALLED AT THE "F" SHAPE BARRIER SHALL BE SHOE BASE TYPE.
- 4- ALUMINUM LIGHTING POLES INSTALLED IN MEDIAN BARRIER SHALL HAVE THE HANG HOLES AT 0" FROM LUMINAIRE ARM AXIS.
- 5- FOR SHOE BASE DETAIL SEE DRAWING NO. 5.
- 6- GROUND ROD MINIMUM DEPTH SHALL BE 4" BELOW ROADWAY SURFACE.

EFFECTIVE DATE: JUNE 1996

COMMONWEALTH OF PUERTO RICO  
DEPARTMENT OF TRANSPORTATION  
AND PUBLIC WORKS  
HIGHWAY AND TRANSPORTATION AUTHORITY

<b>MEDIAN BARRIER MOUNTING DETAIL</b>	RECOMMENDED BY: <i>[Signature]</i>
	DESIGN AREA DIRECTOR DATE: <i>8/22/96</i>
	APPROVED BY: <i>[Signature]</i>
	EXECUTIVE DIRECTOR DATE: <i>8/22/96</i>
	APPROVED BY: <i>[Signature]</i>
	DIST. ENG. SUPERINT. P.R.E.P.A. DATE: <i>8/22/96</i>
APPROVED BY: <i>[Signature]</i>	
DIV. ADM. FHWA-PR DIVISION DATE: <i>8/22/96</i>	

DATE	REVISION	BY	
			STD. DWG.
			LS 12 OF 17