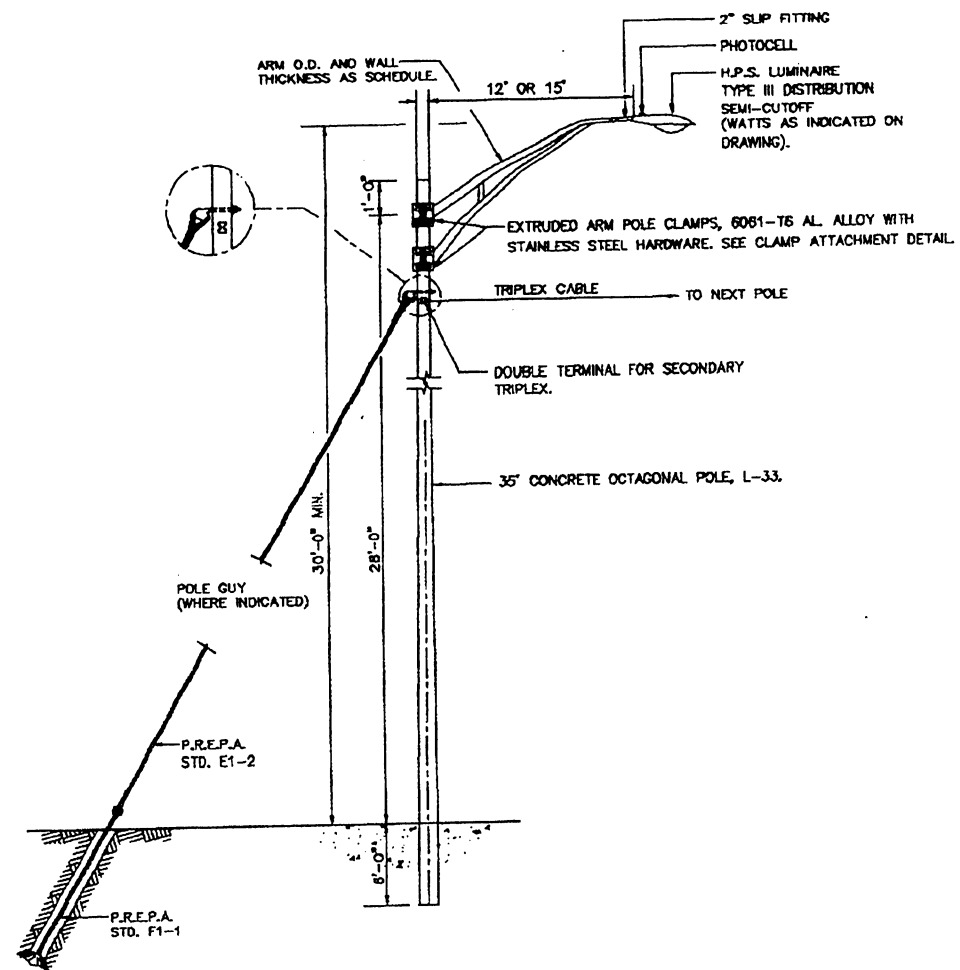


TEMPORARY LIGHTING STANDARD

4' & 8' ARM



TEMPORARY LIGHTING STANDARD

12' & 15' ARM

ARM MINIMUM WALL THICKNESS SCHEDULE (OVERALL DIAMETER & WALL THICKNESS)			
LENGTH	MEMBER	8063-T8	8061-T8
12'	UPPER	3.5" X 0.125	2.5" X 0.203
	LOWER	1.5" X 0.145	2" X 0.218
15'	UPPER	4" X 0.125	2.5" X 0.203
	LOWER	1.5" X 0.145	2.5" X 0.203
4' & 8'	SINGLE MEMBER	(3 1/2" TO 2 3/8") X 0.125	

EFFECTIVE DATE: JUNE 1996

COMMONWEALTH OF PUERTO RICO DEPARTMENT OF TRANSPORTATION AND PUBLIC WORKS HIGHWAY AND TRANSPORTATION AUTHORITY				
TEMPORARY LIGHTING STANDARD	RECOMMENDED BY:	<i>[Signature]</i>		
	DESIGN AREA DIRECTOR:	<i>[Signature]</i>		
	DATE:	12/23/96		
	APPROVED BY:	<i>[Signature]</i>		
	EXECUTIVE DIRECTOR:	<i>[Signature]</i>		
DATE:				
APPROVED BY:	<i>[Signature]</i>			
DIST. ENG. SUPERIN. / P.R.E.P.A.:	<i>[Signature]</i>			
DATE:	20/12/96			
APPROVED BY:	<i>[Signature]</i>			
DIV. ADM. FHWA-PR DIVISION:	<i>[Signature]</i>			
DATE:				
DATE	REVISION	BY	STD.	LS
			DWG.	16 OF 17