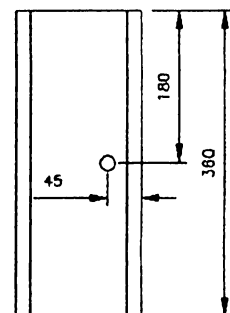
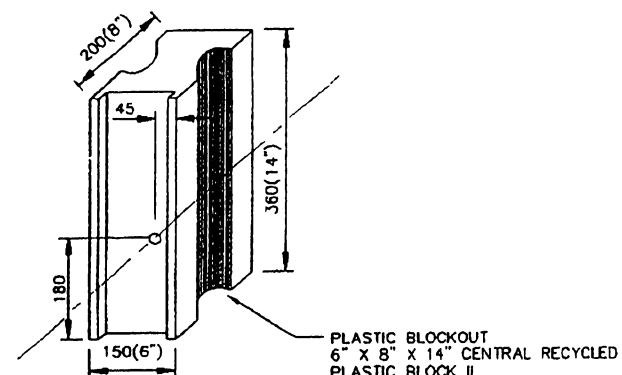


TOP VIEW

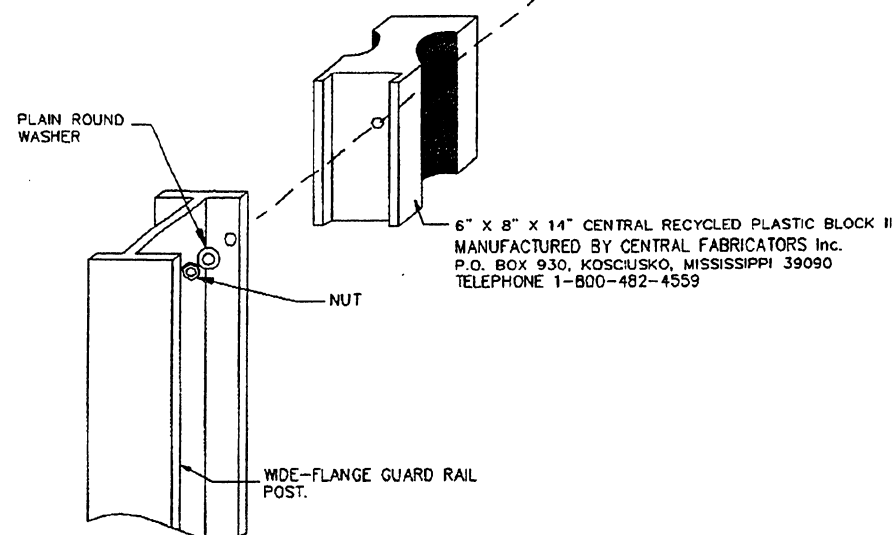
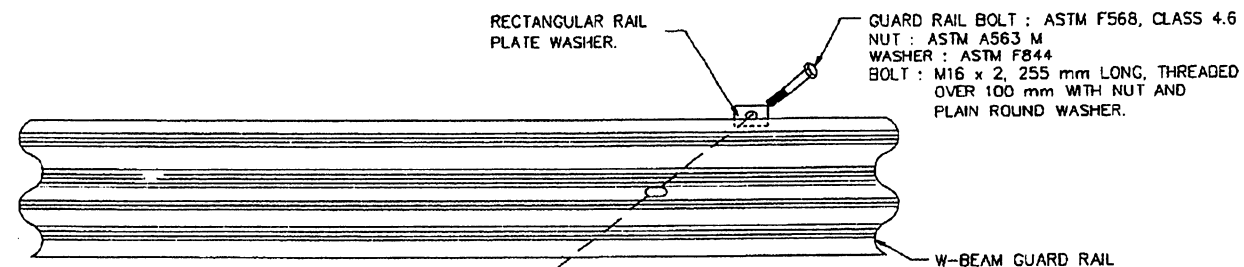


FRONT VIEW



ISOMETRIC VIEW

PLASTIC BLOCKOUT DETAIL



GUARD RAIL POST ASSEMBLY DETAIL

NOTES:

- PLASTIC BLOCKOUTS SHALL BE USED ON ALL NEW STRONG POST GUARD RAIL INSTALLATIONS ON THE FOLLOWING HIGHWAYS SEGMENTS, INCLUDING MAINLINE AND RAMPS INSTALLATIONS:
 - PR-1, FROM ITS INTERCHANGE WITH PR-25 TO ITS INTERCHANGE WITH PR-52 AND PR-18.
 - PR-1, FROM ITS INTERCHANGE WITH PR-20 TO ITS INTERCHANGE WITH PR-30
 - PR-2, FROM ITS INTERCHANGE WITH PR-22 IN HATILLO TO ITS INTERCHANGE WITH PR-52 IN PONCE.
 - PR-2, FROM ITS INTERCHANGE WITH PR-1 (MUÑOZ RIVERA FREEWAY) TO ITS INTERCHANGE WITH PR-165 (SOUTH OF DORADO).
 - PR-3, FROM ITS INTERCHANGE WITH PR-26 IN CAROLINA TO ITS INTERCHANGE WITH PR-53 IN FAJARDO.
 - PR-3, FROM THE ROOSEVELT ROADS BASE TO ITS INTERCHANGE WITH PR-60 IN HUMACAO.
 - PR-10, ENTIRE LENGTH OF THE HIGHWAY
 - PR-14, FROM ITS INTERCHANGE WITH COMERCIO STREET (SOUTH OF PONCE) TO ITS INTERCHANGE WITH PR-52
 - PR-17, ENTIRE LENGTH OF THE HIGHWAY
 - PR-18, ENTIRE LENGTH OF THE HIGHWAY
 - PR-20, ENTIRE LENGTH OF THE HIGHWAY
 - PR-21, FROM ITS INTERCHANGE WITH PR-1 TO ITS INTERCHANGE WITH PR-18
 - PR-22, ENTIRE LENGTH OF THE HIGHWAY
 - PR-25, ENTIRE LENGTH OF THE HIGHWAY
 - PR-26, ENTIRE LENGTH OF THE HIGHWAY
 - PR-28, ENTIRE LENGTH OF THE HIGHWAY
 - PR-30, ENTIRE LENGTH OF THE HIGHWAY
 - PR-52, ENTIRE LENGTH OF THE HIGHWAY
 - PR-53, ENTIRE LENGTH OF THE HIGHWAY
 - PR-66, ENTIRE LENGTH OF THE HIGHWAY
 - PR-107, ENTIRE LENGTH OF THE HIGHWAY
 - PR-165, ENTIRE LENGTH OF THE HIGHWAY
 - PR-181, ENTIRE LENGTH OF THE HIGHWAY
 - PR-194, FROM ITS INTERCHANGE WITH PR-195 TO ITS INTERCHANGE WITH PR-3 (NORTH-WEST OF FAJARDO)
 - PR-195, FROM ITS INTERCHANGE WITH PR-194 TO ITS INTERCHANGE WITH COMETA STREET (FAJARDO DOCK) FAJARDO
 - PR-503, FROM ITS INTERCHANGE WITH PR-10 (NORTH OF PONCE) TO ITS INTERCHANGE WITH PR-10 (SOUTH OF PONCE)

- THE STEEL BLOCKOUT SHALL BE USED IN ALL OTHER ROUTES AND APPLICATIONS.
- THE GUARD RAIL INSTALLATIONS SHALL COMPLY WITH ALL OTHER REQUIREMENTS OF THE CONTRACT, PLANS, SPECIFICATIONS AND STANDARD DRAWINGS FOR METAL BARRIER.
 - THE PLASTIC BLOCKOUT MAY BE USED AS AN ALTERNATE TO THE TIMBER BLOCKOUT.
 - W-BEAM BACK UP PLATE WILL NOT BE USED WITH THIS BLOCK. W-BEAM BACK-UP PLATES USES IS MANDATORY WHEN METAL BLOCK IS USED.

EFFECTIVE DATE: DECEMBER 2000

COMMONWEALTH OF PUERTO RICO DEPARTMENT OF TRANSPORTATION AND PUBLIC WORKS HIGHWAY AND TRANSPORTATION AUTHORITY		
METAL BARRIER W-BEAM STRONG-POST PLASTIC BLOCKOUT DETAILS		RECOMMENDED BY: DESIGN AREA DIRECTOR DATE: Nov 21, 00 APPROVED BY: EXECUTIVE DIRECTOR DATE: 12-11-00
DATE	REVISION	BY
11-2000	DELETED BACK-UP PLATE	I.V.
STD. DWG.	MB	6B OF 28