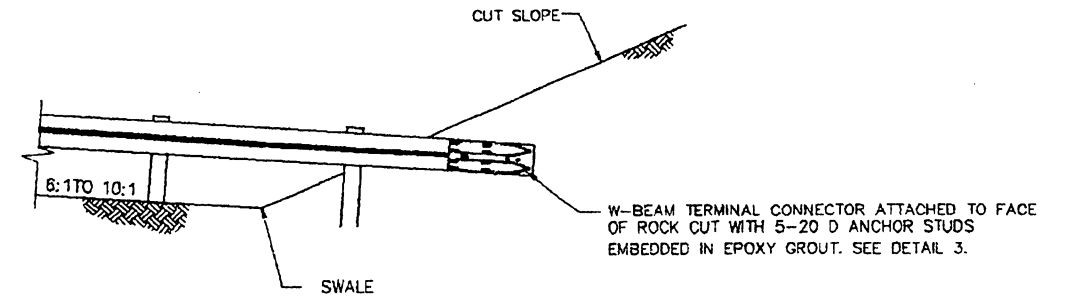


FLARE TABLE

SPEED (M.P.H.)	FLARE RATE
35 OR LESS	7:1
40	8:1
45	10:1
50	11:1
55	12:1
60	14:1
65	14:1
70	15:1

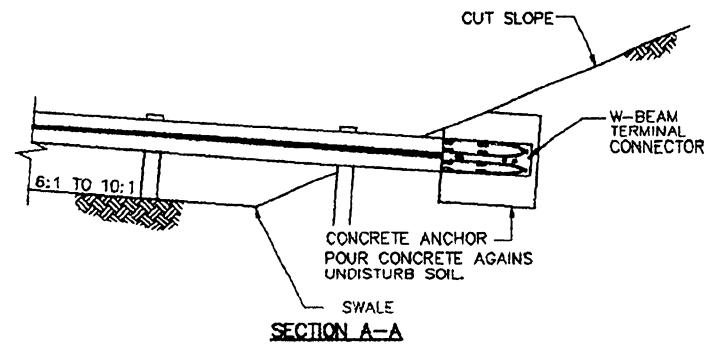
USE DESIGN SPEED WHEN INDICATED ON PLANS, OTHERWISE USE POSTED SPEED.



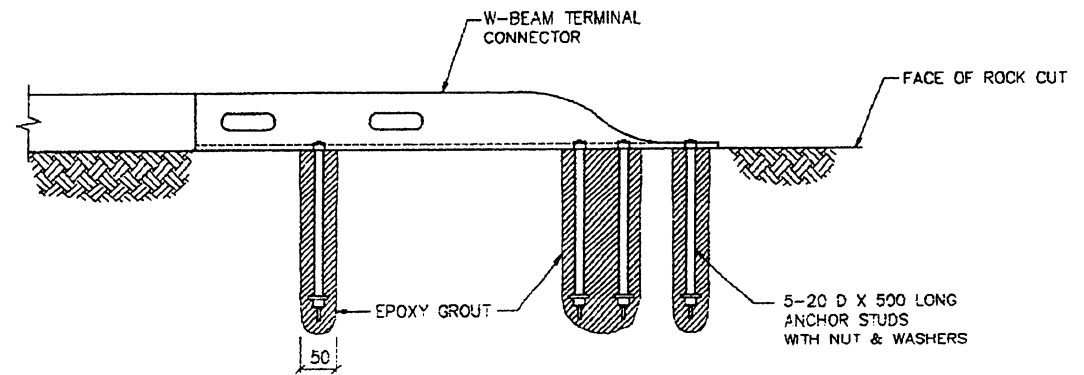
SECTION A-A
ROCK CUT
CASE II

**TERMINAL TYPE MA
TREATMENT - CUT TO FILL CONDITIONS**

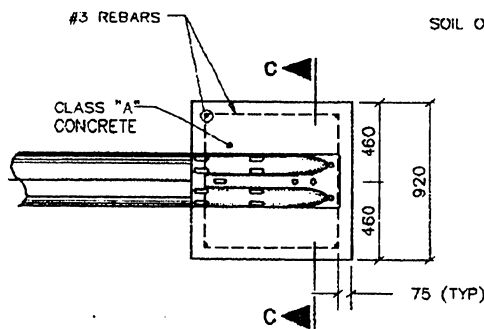
NOTE:
THE CONCRETE ANCHOR, REINFORCEMENT, ALL EXCAVATION, DRILLING, EPOXY GROUT AND ALL NECESSARY HARDWARE FOR THE CONSTRUCTION OF TERMINAL MA SHALL BE A SUBSIDIARY OBLIGATION OF THE GUARD RAIL ITEM.



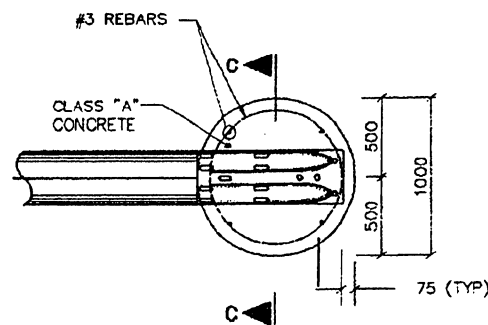
SECTION A-A
CASE I
SOIL OR WEATHERED ROCK CUT



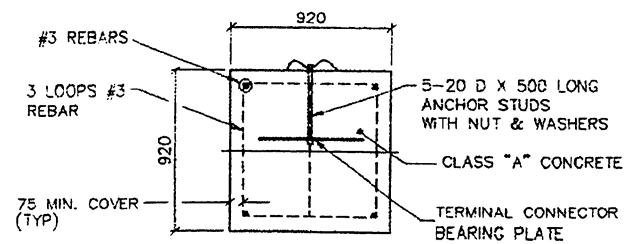
DETAIL 3



ELEVATION

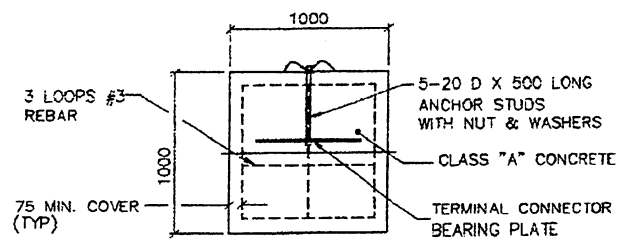


ELEVATION



NOTE:
SET ANCHOR BOLTS BEFORE CASTING CONCRETE ANCHOR

SECTION C-C
DETAIL 1 CONCRETE ANCHOR



NOTE:
SET ANCHOR BOLTS BEFORE CASTING CONCRETE ANCHOR

SECTION C-C
DETAIL 2 ALTERNATE CONCRETE ANCHOR

EFFECTIVE DATE: FEBRUARY 1997

COMMONWEALTH OF PUERTO RICO
DEPARTMENT OF TRANSPORTATION
AND PUBLIC WORKS
HIGHWAY AND TRANSPORTATION AUTHORITY

**METAL BARRIER
W-BEAM STRONG-POST
SINGLE FACE
TERMINAL TYPE MA**

DATE	REVISION	BY	APPROVED BY:
1-1-97	GENERAL REVISION	I.V.	<i>[Signature]</i>
			DESIGN AREA DIRECTOR DATE: <i>Apr 17, 97</i>
			APPROVED BY:
			EXECUTIVE DIRECTOR DATE: <i>4-10-97</i>
			APPROVED BY:
			DIV. ADM. ENGRS. DIVISION DATE: <i>4-10-97</i>

STD.	MB
DWG.	8 OF 28