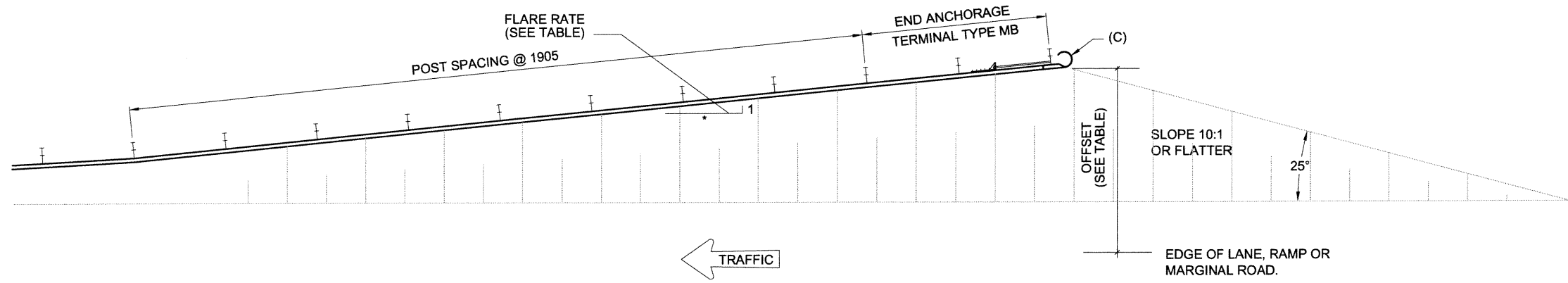


DWG BY: LMARTINEZ 2934

DATE	REVISION	BY
APR. 96	ORIGINAL	
FEB. 97	GENERAL REVISION	
OCT. 97	ADD. NOTE	
DATE	REVISION	BY
SEPT. 09	GENERAL REVISION	
DATE	REVISION	BY
DATE	REVISION	BY

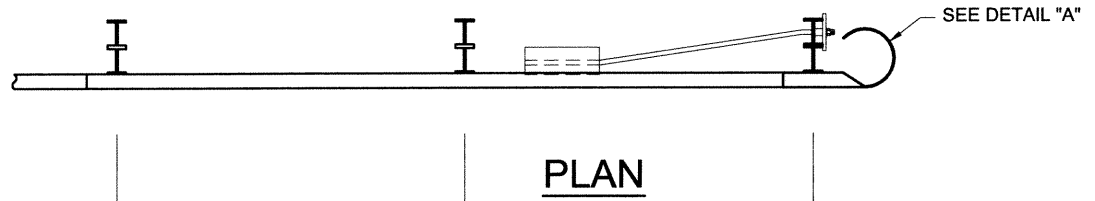


FLARE AND OFFSET TABLE

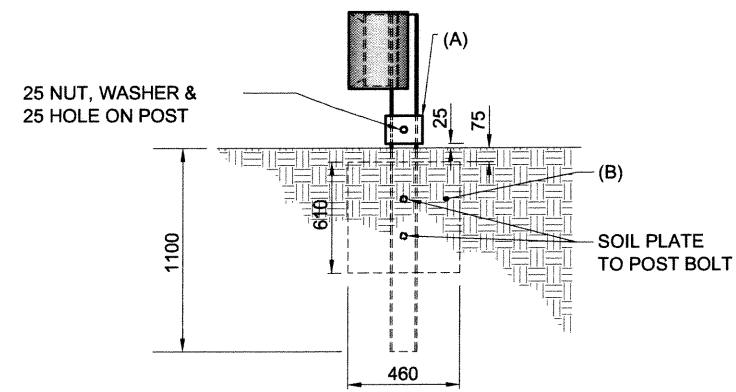
SPEED (M.P.H.)	OFFSET (METERS)	FLARE RATE
35 OR LESS	2.0	7:1
40	5.5	8:1
45	7.0	10:1
50	8.5	11:1
55	9.0	12:1
60	9.0	14:1
65	9.0	14:1
70	9.0	15:1

USE DESIGN SPEED WHEN INDICATED ON PLANS, OTHERWISE USE POSTED SPEED.

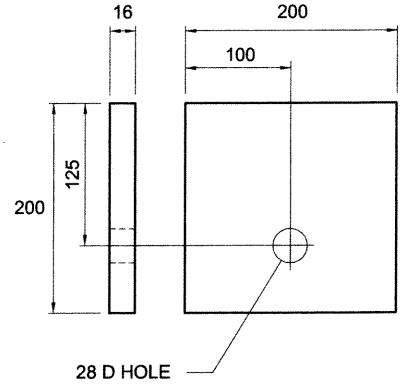
TERMINAL TYPE MB



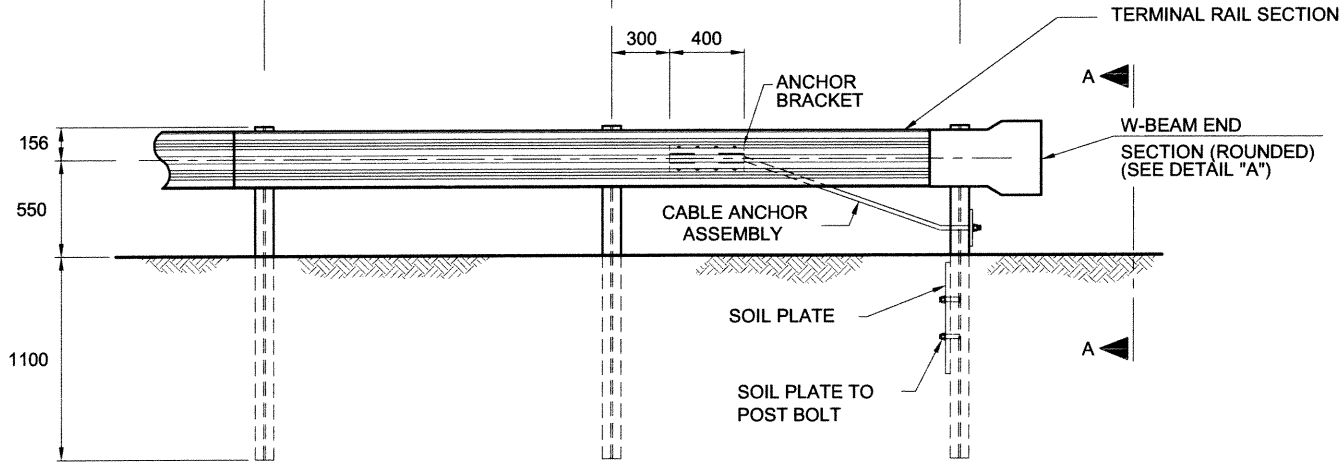
PLAN



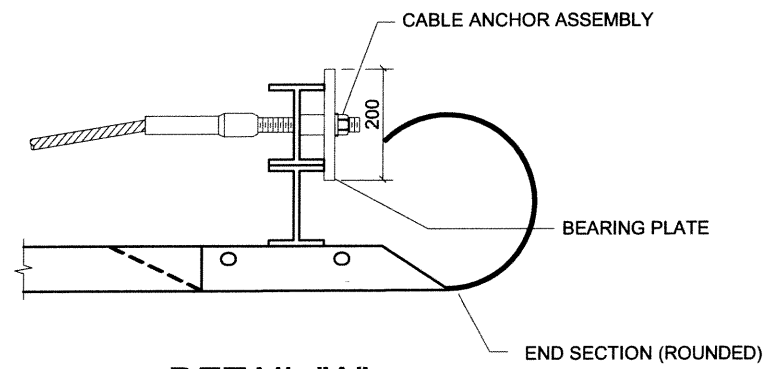
SECTION A-A



BEARING PLATE



ELEVATION



DETAIL "A"

NOTE:
ALL NECESSARY HARDWARE FOR THE CONSTRUCTION OF TERMINAL MB SHALL BE A SUBSIDIARY OBLIGATION OF THE GUARD RAIL ITEM.

- I. SPECIFICATIONS
- A. BEARING PLATE SHALL BE FORMED FROM AASHTO M270M (ASTM A709M) GRADE 250 STEEL PLATE AND ZINC-COATED ACCORDING TO AASHTO M111 (ASTM123). NO PUNCHING, DRILLING OR CUTTING IS PERMITTED AFTER THE PLATE IS ZINC-COATED.
 - B. DIMENSIONAL TOLERANCES NOT SHOWN OR IMPLIED ARE INTENDED TO BE CONSISTENT WITH THE PROPER FUNCTION OF THE PART, INCLUDING ITS APPEARANCE AND ACCEPTED MANUFACTURING PRACTICES.



COMMONWEALTH OF PUERTO RICO
DEPARTMENT OF TRANSPORTATION AND PUBLIC WORKS
HIGHWAY AND TRANSPORTATION AUTHORITY

DATE: 23/1/19

STANDARD DRAWING APPROVED BY: *[Signature]*
DEPUTY EXECUTIVE DIRECTOR FOR INFRASTRUCTURE

**METAL BARRIER
W-BEAM STRONG POST
SINGLE FACE
TERMINAL TYPE MB**

MB-9
SEPTEMBER 2009

ENGINEERING SERVICES AREA ENGINEERING STANDARDS OFFICE