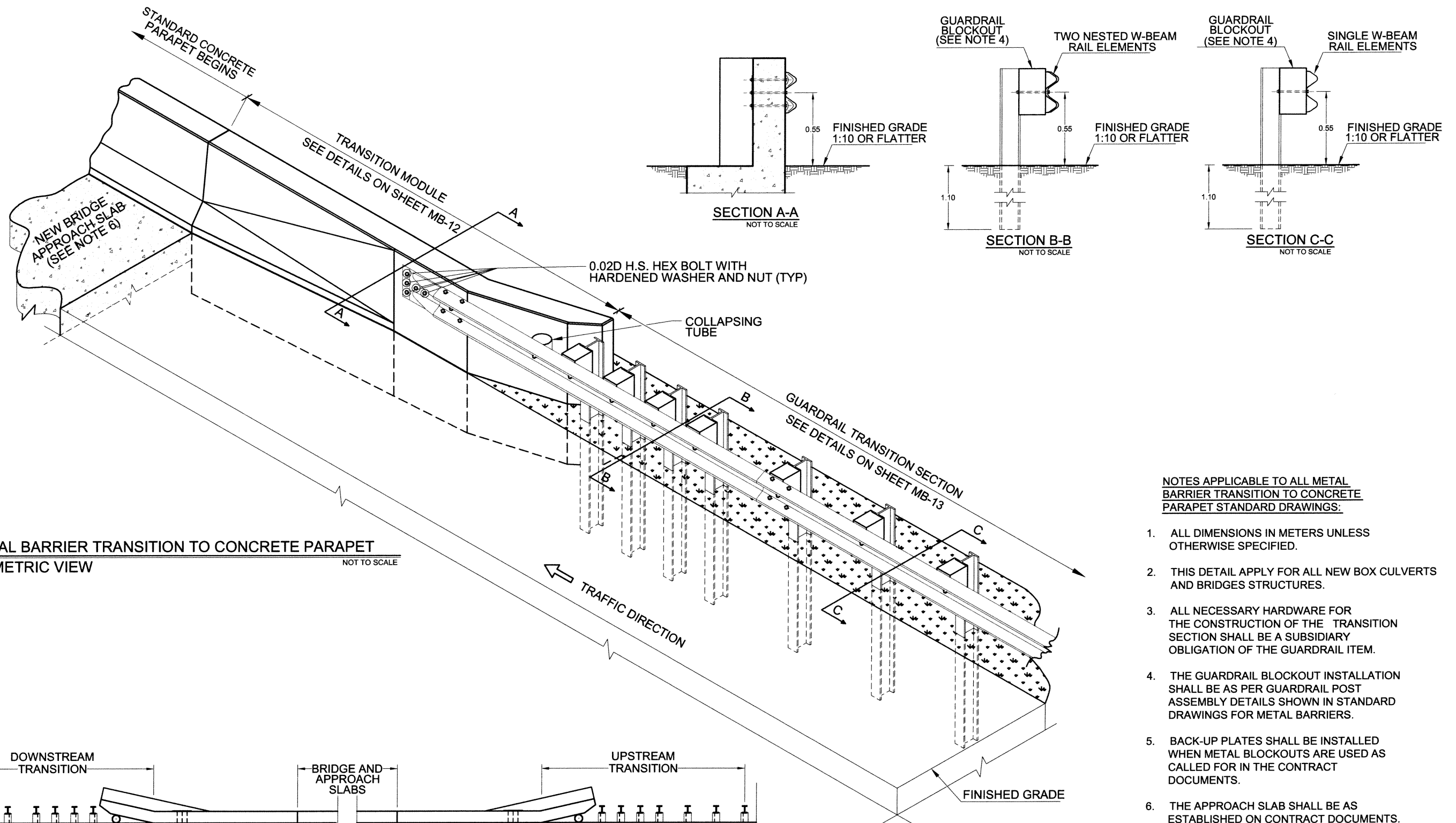
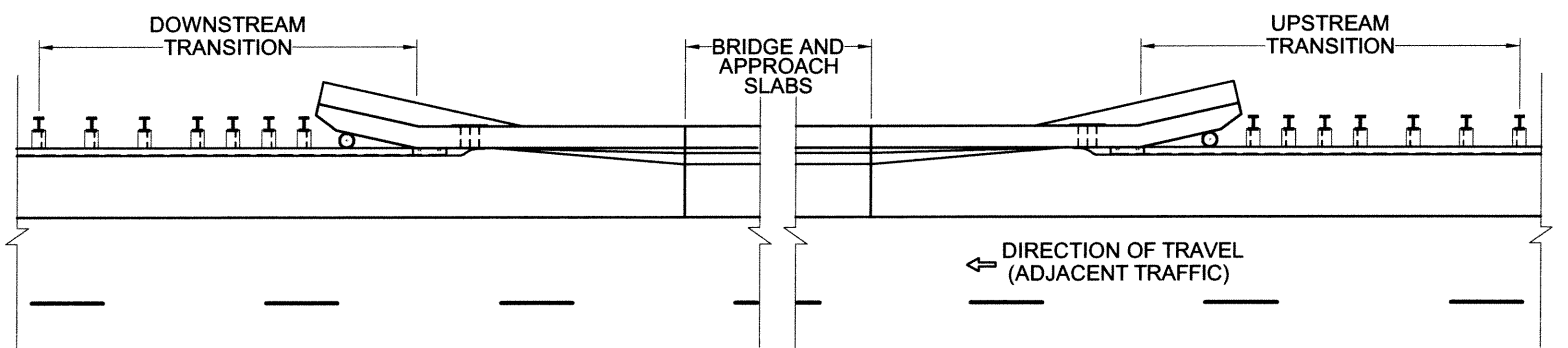


DWG BY: LMARTINEZ 2934

BY	REVISION	DATE
BY	REVISION	DATE
BY	REVISION	DATE
BY	REVISION	DATE
BY	REVISION	DATE
BY	REVISION	DATE
REVISION	ORIGINAL	
DATE	SEPT. 09	



METAL BARRIER TRANSITION TO CONCRETE PARAPET
ISOMETRIC VIEW NOT TO SCALE



DEFINITION OF METAL BARRIER TRANSITION TO CONCRETE PARAPET
DETAIL NOT TO SCALE

NOTES APPLICABLE TO ALL METAL BARRIER TRANSITION TO CONCRETE PARAPET STANDARD DRAWINGS:

1. ALL DIMENSIONS IN METERS UNLESS OTHERWISE SPECIFIED.
2. THIS DETAIL APPLY FOR ALL NEW BOX CULVERTS AND BRIDGES STRUCTURES.
3. ALL NECESSARY HARDWARE FOR THE CONSTRUCTION OF THE TRANSITION SECTION SHALL BE A SUBSIDIARY OBLIGATION OF THE GUARDRAIL ITEM.
4. THE GUARDRAIL BLOCKOUT INSTALLATION SHALL BE AS PER GUARDRAIL POST ASSEMBLY DETAILS SHOWN IN STANDARD DRAWINGS FOR METAL BARRIERS.
5. BACK-UP PLATES SHALL BE INSTALLED WHEN METAL BLOCKOUTS ARE USED AS CALLED FOR IN THE CONTRACT DOCUMENTS.
6. THE APPROACH SLAB SHALL BE AS ESTABLISHED ON CONTRACT DOCUMENTS.
7. THE COLLAPSING TUBE SHALL BE CONNECTED TO RAIL ELEMENT ONLY.
8. TRANSITION SECTION TO CONCRETE PARAPET SHALL BE APPLY FOR BOTH, DOWNSTREAM AND UPSTREAM CONCRETE PARAPET TRANSITION.



COMMONWEALTH OF PUERTO RICO
DEPARTMENT OF TRANSPORTATION AND PUBLIC WORKS
HIGHWAY AND TRANSPORTATION AUTHORITY

DATE: 09/11/09

STANDARD DRAWING APPROVED BY: *[Signature]*
DEPUTY EXECUTIVE DIRECTOR
FOR INFRASTRUCTURE

METAL BARRIER
W-BEAM STRONG POST
TRANSITION SECTION TO CONCRETE PARAPET
TRANSITION MODULE DETAILS

MB-11
SEPTEMBER 2009

ENGINEERING STANDARDS OFFICE
ENGINEERING SERVICES AREA