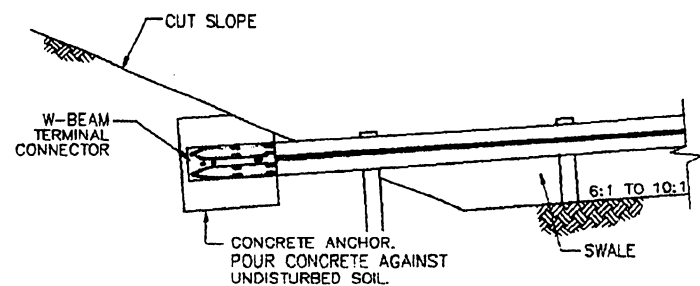


**FLARE TABLE**

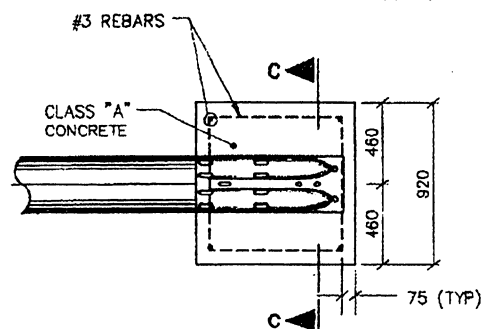
SPEED (M.P.H.)	FLARE RATE
35 OR LESS	7:1
40	8:1
45	10:1
50	11:1
55	12:1
60	14:1
65	14:1
70	15:1

USE DESIGN SPEED WHEN INDICATED ON PLANS, OTHERWISE USE POSTED SPEED.

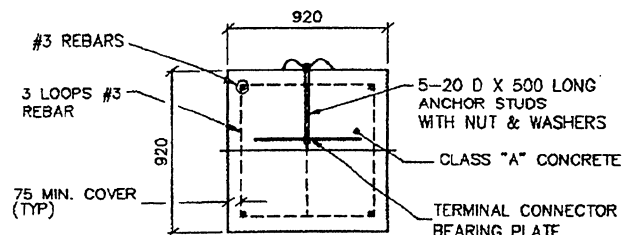
**TERMINAL TYPE MA-MED  
TREATMENT - CUT TO FILL CONDITIONS**



**SECTION A-A  
CASE I  
SOIL OR WEATHERED ROCK CUT**

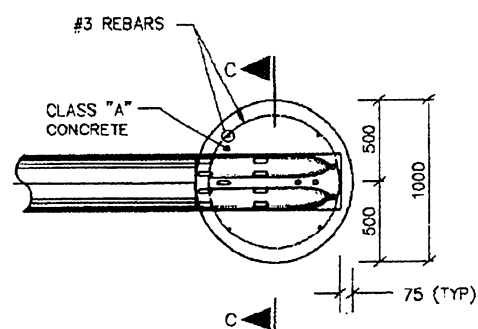


**ELEVATION**

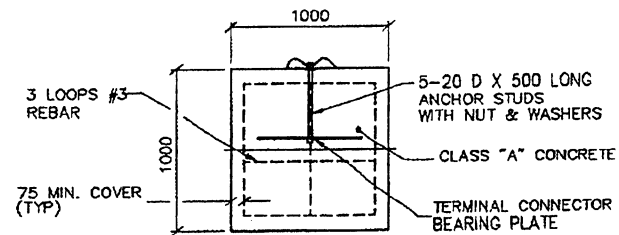


**NOTE:**  
SET ANCHOR BOLTS BEFORE CASTING CONCRETE ANCHOR

**SECTION C-C  
DETAIL 1 CONCRETE ANCHOR**

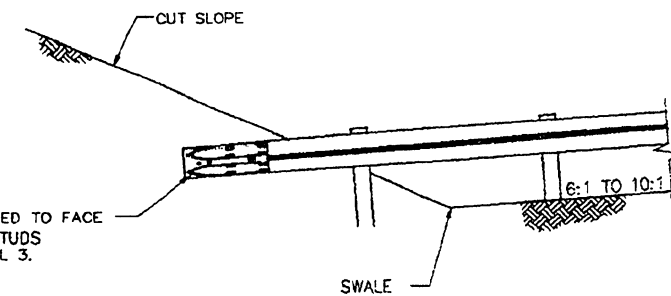


**ELEVATION**



**NOTE:**  
SET ANCHOR BOLTS BEFORE CASTING CONCRETE ANCHOR

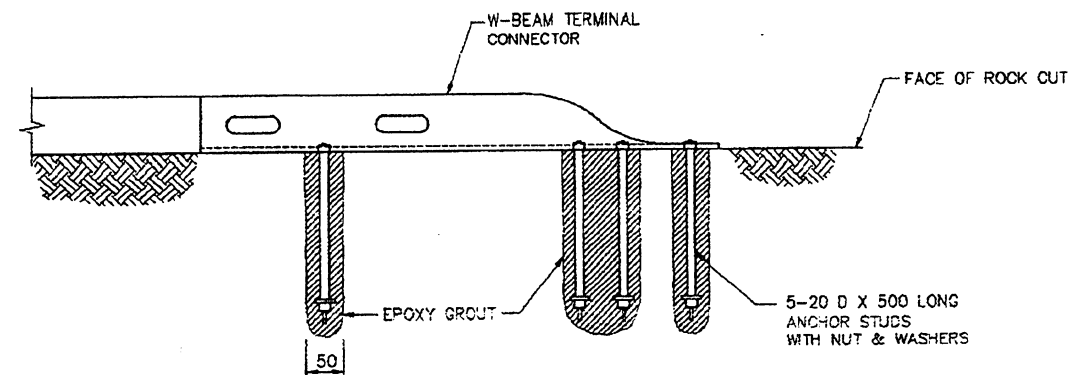
**SECTION C-C  
DETAIL 2 ALTERNATE CONCRETE ANCHOR**



**SECTION A-A  
CASE II  
ROCK CUT**

W-BEAM TERMINAL CONNECTOR ATTACHED TO FACE OF ROCK CUT WITH 5-20 D ANCHOR STUDS EMBEDDED IN EPOXY GROUT. SEE DETAIL 3.

**NOTE:**  
THE CONCRETE ANCHOR, REINFORCEMENT, ALL EXCAVATION AND ALL NECESSARY HARDWARE FOR THE CONSTRUCTION OF TERMINAL MA-MED SHALL BE A SUBSIDIARY OBLIGATION OF THE GUARD RAIL ITEM.



**DETAIL 3**

EFFECTIVE DATE: FEBRUARY 1997

COMMONWEALTH OF PUERTO RICO DEPARTMENT OF TRANSPORTATION AND PUBLIC WORKS HIGHWAY AND TRANSPORTATION AUTHORITY			
<b>METAL BARRIER W-BEAM STRONG-POST DOUBLE FACE TERMINAL TYPE MA-MED</b>			RECOMMENDED BY: <i>[Signature]</i> DESIGN AREA DIRECTOR: DATE: 11-14-97 APPROVED: <i>[Signature]</i> EXECUTIVE DIRECTOR: DATE: <i>[Signature]</i> APPROVED BY: <i>[Signature]</i> DIV. ADM. FHWA-PR DIVISION DATE: 4-10-97
DATE	REVISION	BY	STD. MB DWG. 20 OF 28
1-1-97	GENERAL REVISION	L.V.	