

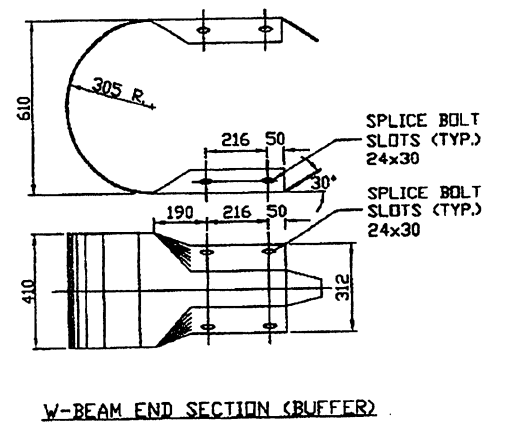
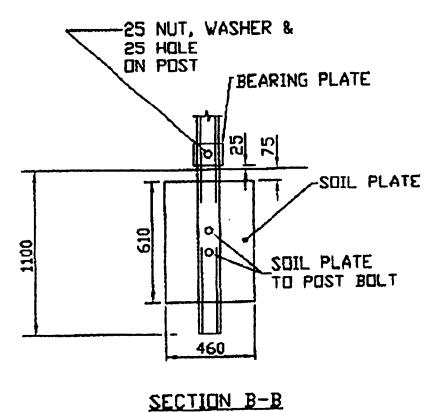
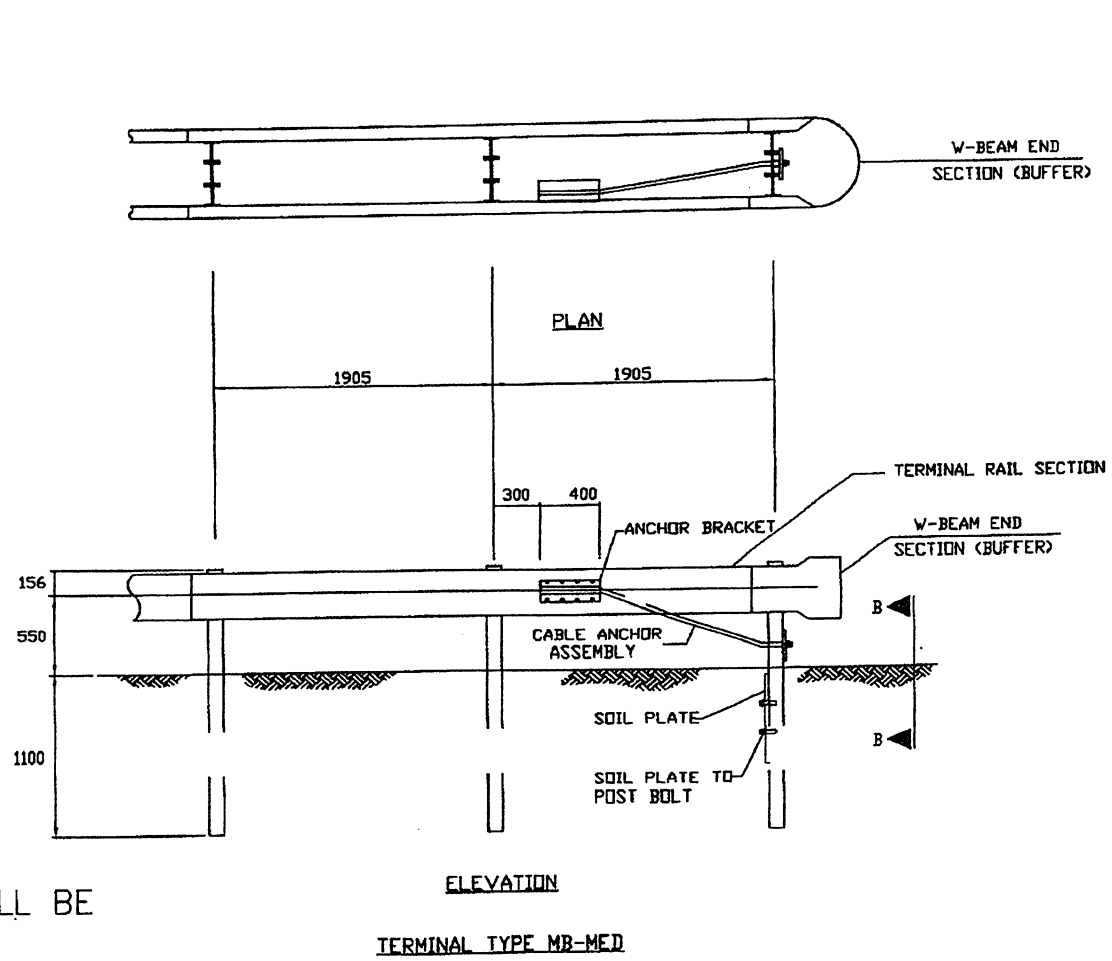
- I. SPECIFICATIONS
- A. BEARING PLATE SHALL BE FORMED FROM AASHTO M270M (ASTM A709M) GRADE 250 STEEL PLATE AND ZINC-COATED ACCORDING TO AASHTO M111 (ASTM123). NO PUNCHING, DRILLING OR CUTTING IS PERMITTED AFTER THE PLATE IS ZINC-COATED.
  - B. DIMENSIONAL TOLERANCES NOT SHOWN OR IMPLIED ARE INTENDED TO BE CONSISTENT WITH THE PROPER FUNCTION OF THE PART, INCLUDING ITS APPEARANCE AND ACCEPTED MANUFACTURING PRACTICES.

FLARE AND OFFSET TABLE

SPEED (M.P.H.)	OFFSET	FLARE RATE
35 OR LESS	2.0	7:1
40	3.5	8:1
45	7.0	10:1
50	8.5	11:1
55	9.0	12:1
60	9.0	14:1
65	9.0	14:1
70	9.0	15:1

USE DESIGN SPEED WHEN INDICATED ON PLANS, OTHERWISE USE POSTED SPEED.

NOTE:  
ALL NECESSARY HARDWARE FOR THE CONSTRUCTION OF TERMINAL MB-MED SHALL BE A SUBSIDIARY OBLIGATION OF THE GUARD RAIL ITEM.



EFFECTIVE DATE: OCTOBER 1997

COMMONWEALTH OF PUERTO RICO  
DEPARTMENT OF TRANSPORTATION AND PUBLIC WORKS  
HIGHWAY AND TRANSPORTATION AUTHORITY

METAL BARRIER  
W-BEAM STRONG POST  
DOUBLE FACE  
TERMINAL TYPE MB-MED

RECOMMENDED BY: [Signature]  
DESIGN AREA DIRECTOR  
DATE: 5/22/97

APPROVED BY: [Signature]  
EXECUTIVE DIRECTOR  
DATE: [Signature]

APPROVED BY: [Signature]  
ADM. ENGR. DIVISION  
DATE: Oct 9, 97

DATE	REVISION	BY
1-1-97	GENERAL REVISION	L.V.
8-16-97	ADD NOTE	L.V.

STD. MB  
DWG. 21 OF 28