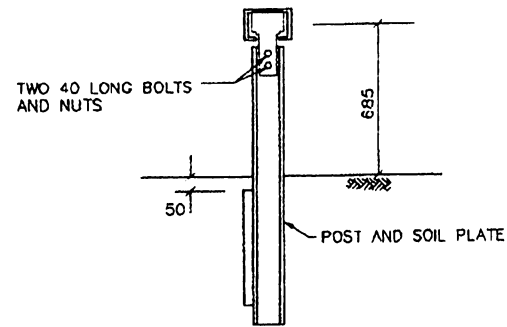
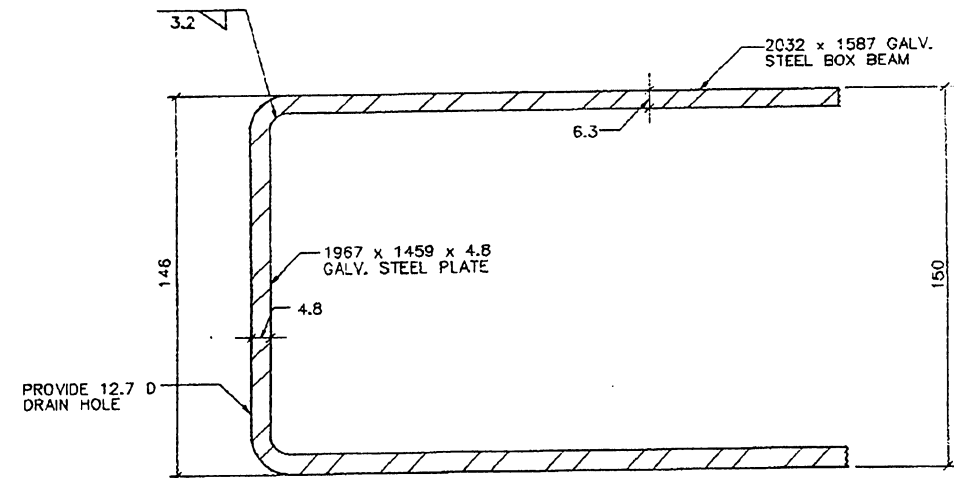


WEAK POST BOX-BEAM GUARD RAIL



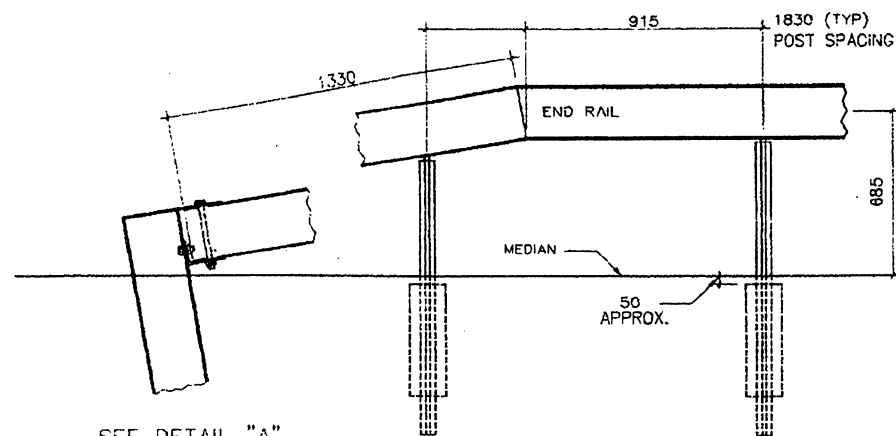
WEAK POST BOX-BEAM MEDIAN BARRIER



BOX BEAM
END TREATMENT
ASTM A 36, A 123

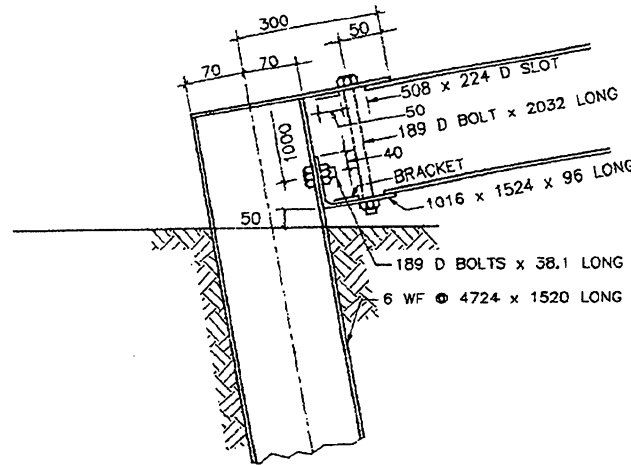
NOTES

- 1- MINIMUM LENGTH OF RAIL TUBE SHALL BE 5490.
- 2- SEE CONTRACT PLANS FOR LAYOUT DETAILS OF BOX BEAM MEDIAN BARRIERS.
- 3- STEEL RAILS TO CONFORM TO ASTM STANDARD A 500 GRADE B.
- 4- RAIL ALIGNMENT TO BE STRAIGHT AT SPLICE. NO LATERAL BEND PERMITTED WITHIN THE SPLICE. THIS DOES NOT PRECLUDE THE SHOP FABRICATION OF BENT SPLICES.



SEE DETAIL "A"

TYPICAL END TREATMENT



DETAIL "A"

EFFECTIVE DATE: FEBRUARY 1997

COMMONWEALTH OF PUERTO RICO DEPARTMENT OF TRANSPORTATION AND PUBLIC WORKS HIGHWAY AND TRANSPORTATION AUTHORITY			
METAL BARRIER		RECOMMENDED BY <i>[Signature]</i>	
BOX BEAM		DESIGN AREA DIRECTOR DATE: <i>11-19-97</i>	
		APPROVED BY: <i>[Signature]</i>	
		EXECUTIVE DIRECTOR DATE:	
		APPROVED BY: <i>[Signature]</i>	
		DIV. ADM. FHWA-PR DIVISION DATE: <i>4-10-97</i>	
DATE	REVISION	BY	
1-1-97	GENERAL REVISION	L.V.	STD. MB DWG. 28 OF 28