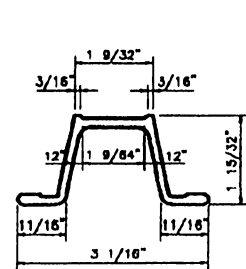
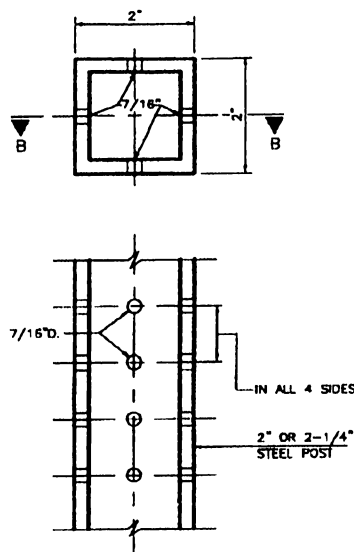


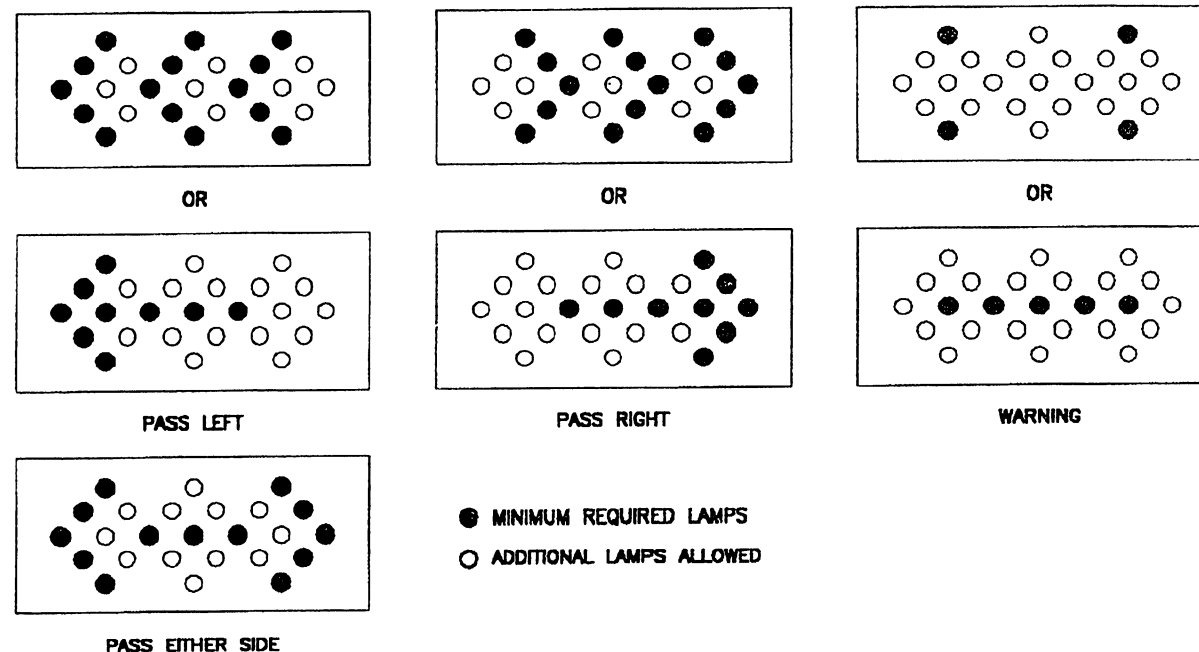
VERTICAL PANEL



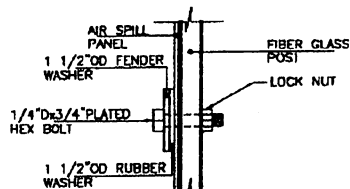
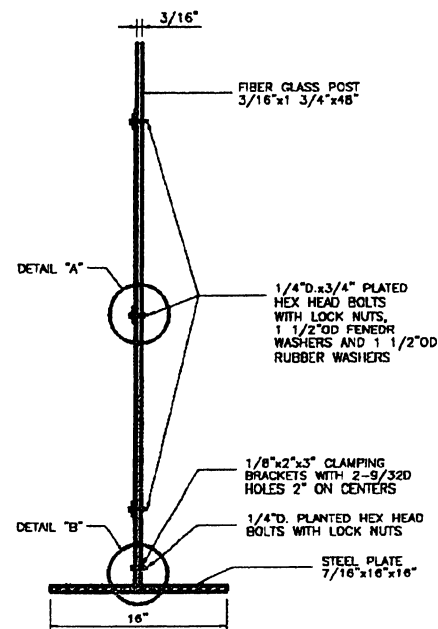
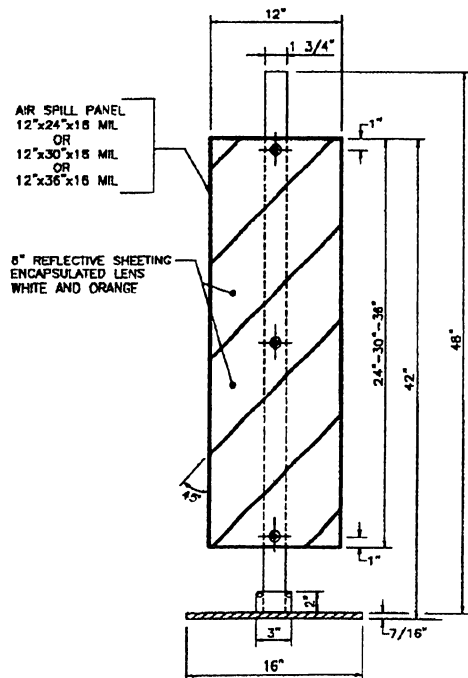
SECTION A-A
SCALE: 1-1/2"=1'-0"



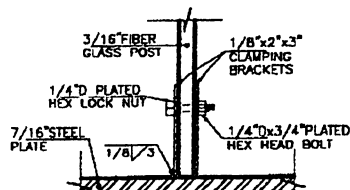
SECTION B-B
ALTERNATE POST



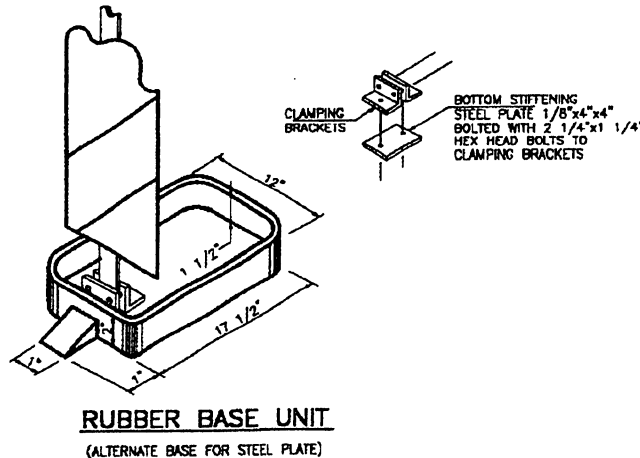
ADVANCE WARNING ARROW PANELS MODES



DETAIL "A"



DETAIL "B"



GENERAL NOTES:

- 1 - VERTICAL PANELS AND AIR-SPILL SHALL BE USED IN NARROW AREAS WHERE BARRICADES AND DRUMS WOULD BE TOO WIDE.
- 2 - AIR-SPILL TRAFFIC CONTROL PANEL MAY BE USED AS AN ALTERNATE TO DRUMS, VERTICAL PANELS AND TYPE II BARRICADES.
- 3 - ALL ARROW PANELS SHALL BE RECTANGULAR AND HAVE A FLAT BLACK FINISH. YELLOW LAMPS MUST BE RECESSED INTO THE PANEL OR HAVE HOODS THAT COVER AT LEAST 3 RED (180°) OF LAMP CIRCUMFERENCE.
- 4 - MINIMUM HEIGHT FOR ALL ARROW PANELS SHALL BE 7 FEET, MEASURED FROM THE EDGE OF THE ROADWAY (N.U.T.C.D. DEFINITION) TO THE BOTTOM OF THE PANEL (EXCEPTION: VEHICLE-MOUNTED ARROW PANELS SHALL HAVE TO BE LOWER, BUT MOUNTED AS HIGH AS POSSIBLE.)
- 5 - ARROW PANELS SHALL NOT BE USED TO CLOSE A LANE ON A TWO-LANE TWO-WAY ROAD.
- 6 - ALL TRAFFIC CHANNELIZING DEVICES SHALL COMPLY WITH NCHRP 350. IT SHALL BE THE CONTRACTOR AND VENDORS RESPONSIBILITY TO CERTIFY THAT THEIR PRODUCT IS CRASHWORTHY. ARROW PANELS ARE EXCEPTED.

TABLE - ADVANCE ARROW PANEL SPECIFICATION

PANEL SIZE	MINIMUM SIZE (INCHES)	MINIMUM LEGIBILITY DISTANCE (MILES)	MINIMUM NUMBER OF ELEMENTS
A	48 x 24	1/2	12
B	60 x 30	3/4	13
C	96 x 48	1	15

"AIR SPILL" TRAFFIC CONTROL PANEL MODEL #DSTA-MRB AS MANUFACTURED BY FLASHER HANDLING CORPORATION

EFFECTIVE DATE: FEBRUARY 2000

**COMMONWEALTH OF PUERTO RICO
DEPARTMENT OF TRANSPORTATION
AND PUBLIC WORKS
HIGHWAY AND TRANSPORTATION AUTHORITY**

MAINTENANCE AND PROTECTION OF TRAFFIC CHANNELIZING DEVICES

RECOMMENDED BY: *[Signature]*
DEPUTY EXEC. DIR. FOR TRAFFIC AND TOLL ROADS
DATE: 2/2/00

APPROVED BY: *[Signature]*
EXECUTIVE DIRECTOR
DATE: 2/2/11/99

APPROVED BY: *[Signature]*
DIV. ADM. FHWA-PR DIVISION
DATE: 1-15-2000

DATE	REVISION	BY
12-1999	GENERAL NOTE #4	
	GENERAL NOTE #6	

STD. DWG. 2 OF 22