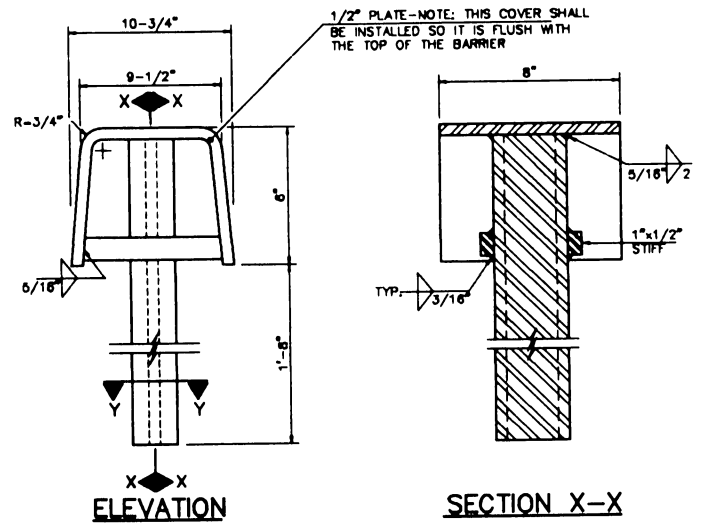
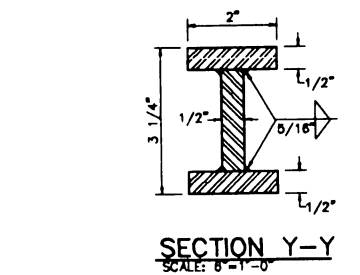


PLAN

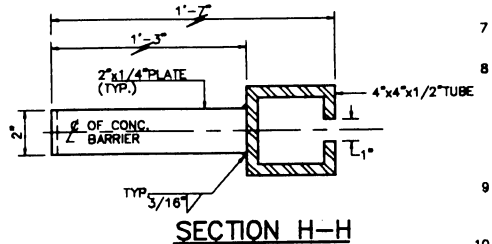


ELEVATION

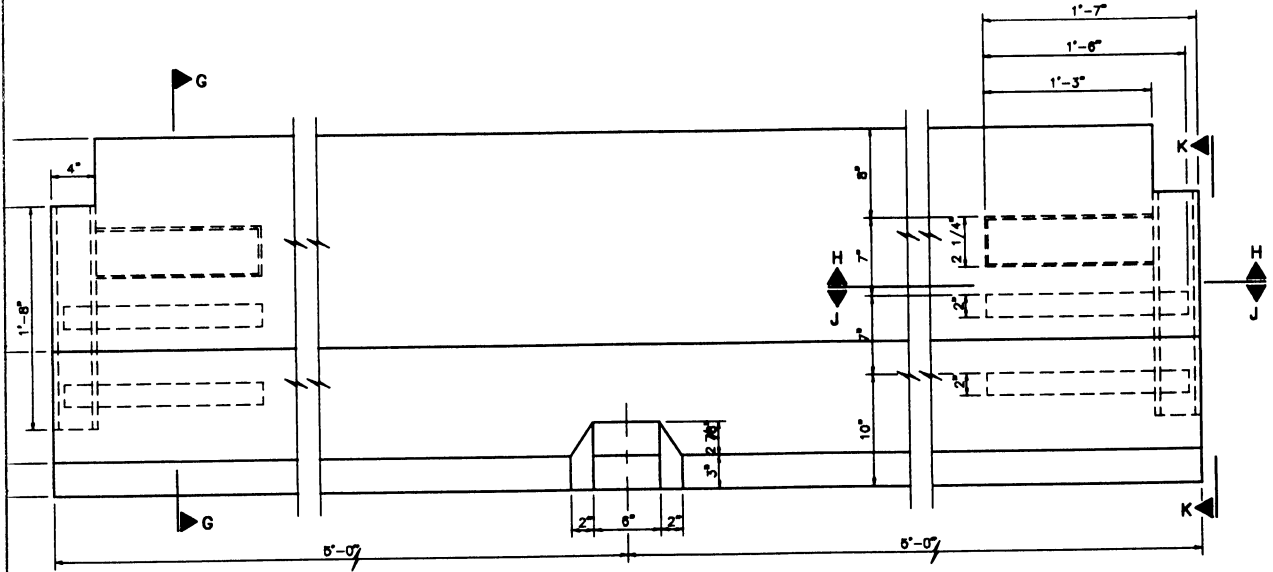
SECTION X-X



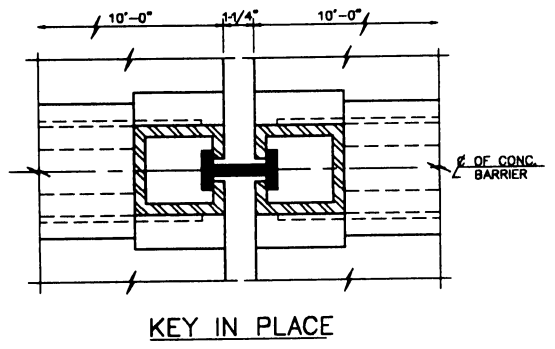
SECTION Y-Y
SCALE: 8-1-0



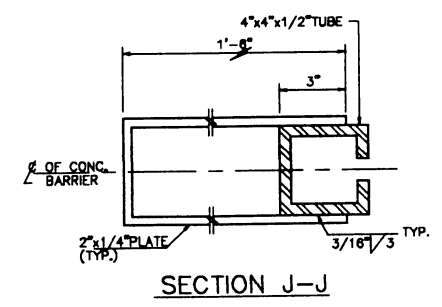
SECTION H-H



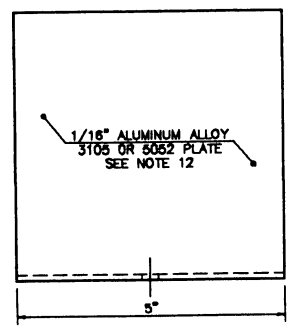
ELEVATION



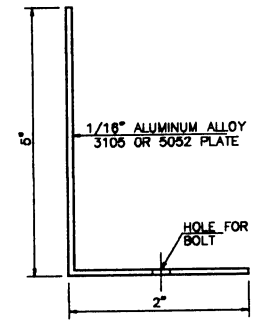
KEY IN PLACE



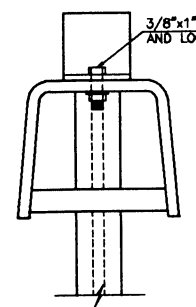
SECTION J-J



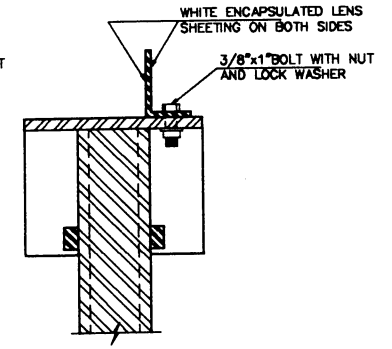
FRONT VIEW
FULL SCALE



SIDE VIEW
FULL SCALE



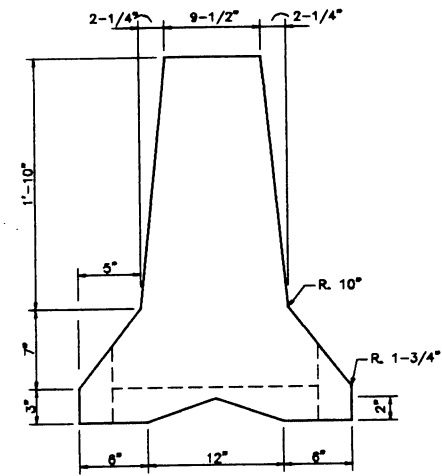
ELEVATION
SCALE: 3-1-0



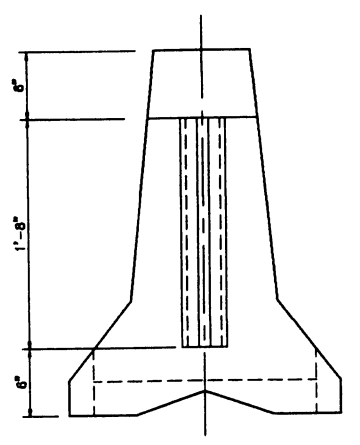
SECTION
SCALE: 3-1-0

GENERAL NOTES:

- 1 - CONCRETE SHALL HAVE A MINIMUM COMPRESSIVE STRENGTH OF 3,000 PSI.
- 2 - CONCRETE CLEAR COVER FOR REINFORCING BARS SHALL BE 1-1/2" (MIN.)
- 3 - A MINIMUM OF TWO (2) RECESSED LIFTING DEVICES SHALL BE USED ON EACH SECTION.
- 4 - TUBE STEEL SHALL BE ASTM A-500, GRADE B OR C.
- 5 - 3" x 6" DRAINAGE POCKETS - ONE REQUIRED FOR EACH SECTION.
- 6 - AFTER A BARRIER UNIT HAS BEEN PLACED AND THE CONNECTION KEY INSERTED, REMOVE ANY SLACK IN THE JOINT BY PULLING THE UNIT IN A DIRECTION PARALLEL TO ITS LONGITUDINAL AXIS.
- 7 - THE TEMPORARY CONCRETE BARRIER SHALL BE PRECAST UNITS OF 10 FEET LENGTH.
- 8 - TEMPORARY CONCRETE BARRIER SHALL BE PRECAST IN STEEL FORMS. THE REQUIREMENT FOR CURING OF SPECIFICATION 601 STRUCTURAL CONCRETE SHALL APPLY. THE BARRIER UNITS SHALL HAVE A SMOOTH FINISH. NO RUBBING, BROOMING OR OTHER WORKING SHALL BE PERMITTED AFTER THE FORMS ARE REMOVED EXCEPT FOR NECESSARY REPAIRS WHICH SHALL BE FINISHED TO MATCH WITH THE SURROUNDING SURFACE.
- 9 - THE CONTRACTOR SHALL DESIGN THE REINFORCING STEEL FOR LIFTING AND HANDLING THE CONCRETE BARRIER SECTIONS.
- 10 - ALL BARRIER SECTIONS SHALL BE PAINTED WITH WHITE PAINT IN ACCORDANCE WITH SPECIFICATION IT-P-115 F TRAFFIC PAINT, TYPE II.
- 11 - THE BARRIER SYSTEM SHALL BE INSTALLED IN A CONTINUOUS WAY AND CONNECTED TOGETHER WITH THE KEY CONNECTION DETAIL SHOWN.
- 12 - CONTRACTOR SHALL DESIGN CONNECTION OF REFLECTIVE SHEETING PLATE TO BARRIER.
- 13 - WHEN BARRIER IS PLACED ON A BRIDGE DECK WHERE THE EXISTING BRIDGE PARAPET HAS BEEN DEMOLISHED, WALL TIES AND ANCHORS AS DEPICTED ON DRAWING MPT 5 SHALL BE USED TO ANCHOR THE BARRIER TO THE BRIDGE DECK.
- 14 - REFLECTIVE SHEETING PLATES AND WHITE PAINT SHALL BE CONSIDERED AS SUBSIDIARY OBLIGATION OF THE UNDER PAY ITEMS FOR STANDARD SPEC. 638



SECTION G-G



ELEVATION K-K

CONCRETE BARRIER
SCALE: 1 1/2"=1'-0"

REFLECTIVE SHEETING MOUNTING DETAILS

NOTES:

- 1 - TOLERANCES WHICH ARE SHOWN IN THE VARIOUS DETAILS ARE AS FOLLOWS: (1) CROSS-SECTIONAL DIMENSIONS SHALL NOT EXCEED THE DIMENSIONS SHOWN BY MORE THAN 1/4". (2) LONGITUDINAL DIMENSIONS SHALL NOT EXCEED THE DIMENSION BY MORE THAN 1/4" PER 10 FEET OF BARRIER SECTION. (3) SURFACE STRAIGHTNESS WHEN CHECKED WITH A 10 FOOT STRAIGHT EDGE SHALL NOT EXHIBIT IRREGULARITIES EXCEEDING 1/4".
- 2 - ALL WELDING SHALL BE PERFORMED BY A WELDER QUALIFIED IN ACCORDANCE WITH SPECIFICATION 616 STEEL STRUCTURES SECTIONS 616-3.03-S WELDING.

EFFECTIVE DATE: APRIL 1996

EFFECTIVE DATE: APRIL / 1996		
COMMONWEALTH OF PUERTO RICO DEPARTMENT OF TRANSPORTATION AND PUBLIC WORKS HIGHWAY AND TRANSPORTATION AUTHORITY		
MAINTENANCE AND PROTECTION OF TRAFFIC		RECOMMENDED BY <i>[Signature]</i> DESIGN AREA DIRECTOR DATE: 1/17/96
F SHAPE TEMPORARY CONCRETE BARRIER WITH VERTICAL I - BEAM		APPROVED BY <i>[Signature]</i> EXECUTIVE DIRECTOR DATE: 1/17/96
DATE	REVISION	BY
		STD. DWG.
		MPT 3A OF 22