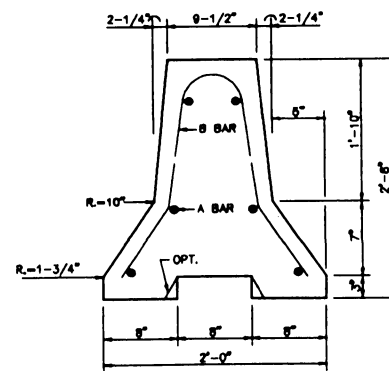


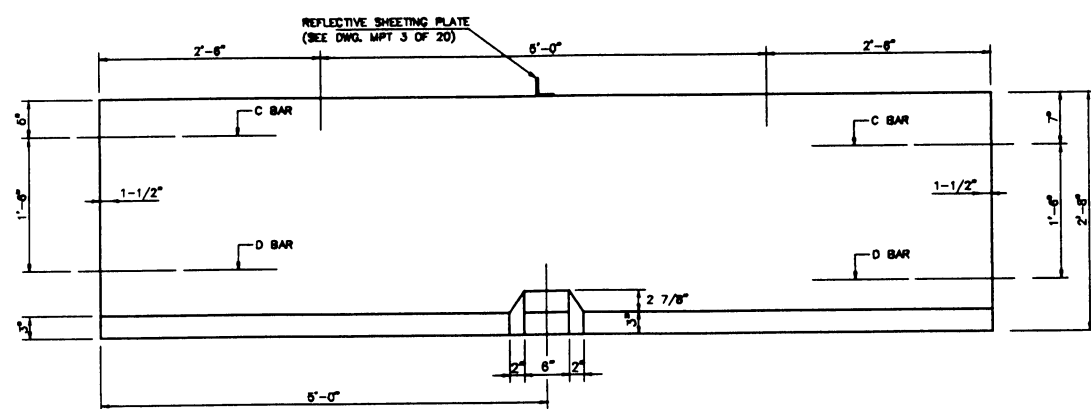
PLAN



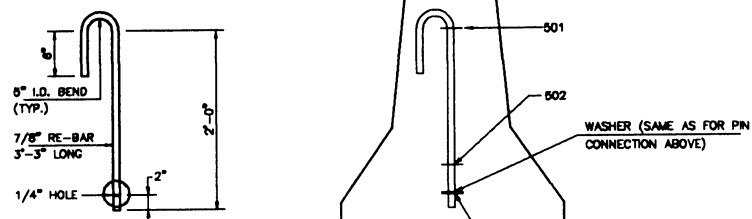
END ELEVATION

GENERAL NOTES:

- 1 - CONCRETE SHALL HAVE A MINIMUM COMPRESSIVE STRENGTH OF 3,000 PSI.
- 2 - CONCRETE CLEAR COVER FOR REINFORCING BARS SHALL BE 1-1/2" (MIN.)
- 3 - A MINIMUM OF TWO (2) RECESSED LIFTING DEVICES SHALL BE USED ON EACH SECTION.
- 4 - TUBE STEEL SHALL BE ASTM A-500, GRADE B OR C.
- 5 - 3" x 6" DRAINAGE POCKETS - ONE REQUIRED FOR EACH SECTION.
- 6 - AFTER A BARRIER UNIT HAS BEEN PLACED AND THE CONNECTION KEY INSERTED, REMOVE ANY SLACK IN THE JOINT BY PULLING THE UNIT IN A DIRECTION PARALLEL TO ITS LONGITUDINAL AXIS.
- 7 - THE TEMPORARY CONCRETE BARRIER SHALL BE PRECAST UNITS OF 10 FEET LENGTH.
- 8 - TEMPORARY CONCRETE BARRIER SHALL BE PRECAST IN STEEL FORMS. THE REQUIREMENT FOR CURING OF SPECIFICATION 801 STRUCTURAL CONCRETE SHALL APPLY. THE BARRIER UNITS SHALL HAVE A SMOOTH FINISH. NO RUBBING, BROOMING OR OTHER WORKING SHALL BE PERMITTED AFTER THE FORMS ARE REMOVED EXCEPT FOR NECESSARY REPAIRS WHICH SHALL BE FINISHED TO MATCH WITH THE SURROUNDING SURFACE.
- 9 - THE CONTRACTOR SHALL DESIGN THE REINFORCING STEEL FOR LIFTING AND HANDLING THE CONCRETE BARRIER SECTIONS.
- 10 - ALL BARRIER SECTIONS SHALL BE PAINTED WITH WHITE PAINT IN ACCORDANCE WITH SPECIFICATION II-P-115 F TRAFFIC PAINT, TYPE II.
- 11 - THE BARRIER SYSTEM SHALL BE INSTALLED IN A CONTINUOUS WAY AND CONNECTED TOGETHER WITH THE KEY CONNECTION DETAIL SHOWN.
- 12 - CONTRACTOR SHALL DESIGN CONNECTION OF REFLECTIVE SHEETING PLATE TO BARRIER.
- 13 - WHEN BARRIER IS PLACED ON A BRIDGE DECK WHERE THE EXISTING BRIDGE PARAPET HAS BEEN DEMOLISHED, WALL TIES AND ANCHORS AS DEPICTED ON DRAWING MPT 5 SHALL BE USED TO ANCHOR THE BARRIER TO THE BRIDGE DECK.
- 14 - REFLECTIVE SHEETING PLATES AND WHITE PAINT SHALL BE CONSIDERED AS SUBSIDIARY OBLIGATION OF THE UNDER PAY ITEMS FOR STANDARD SPEC. 638

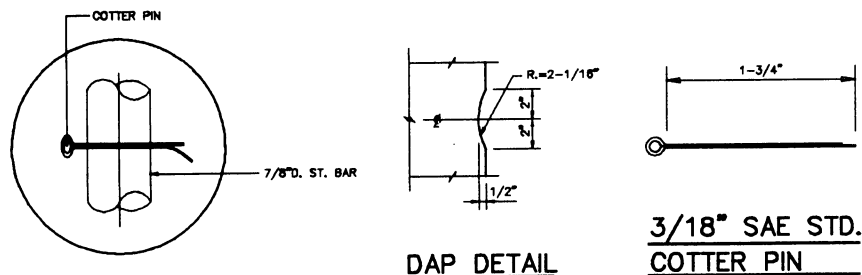


SIDE VIEW



RE-BAR CONNECTION

NOT TO SCALE

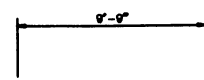


DAP DETAIL

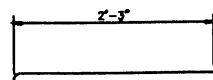
3/18" SAE STD. COTTER PIN

NOTES:

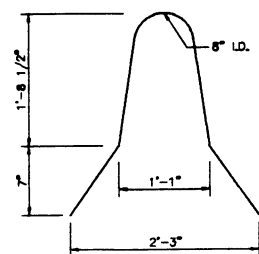
- 1 - MATERIALS: CLASS "A" CONCRETE AND 40 STEEL.
- 2 - BARRIERS SHALL BE PLACED SUCH THAT OPENINGS BETWEEN INDIVIDUAL SECTIONS SHALL BE KEPT TO A MINIMUM.
- 3 - BARRIER SECTIONS SHALL BE CONNECTED TOGETHER WITH THE 7/8" HOOKED REBAR OR WITH THE CONNECTOR PIN ASSEMBLY. CONNECTIONS SHALL BE MAINTAINED BY THE CONTRACTOR FOR THE DURATION OF THE BARRIER INSTALLATION.



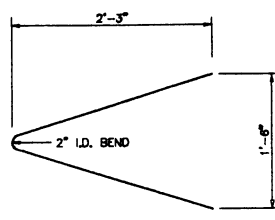
#4 REBAR A BAR



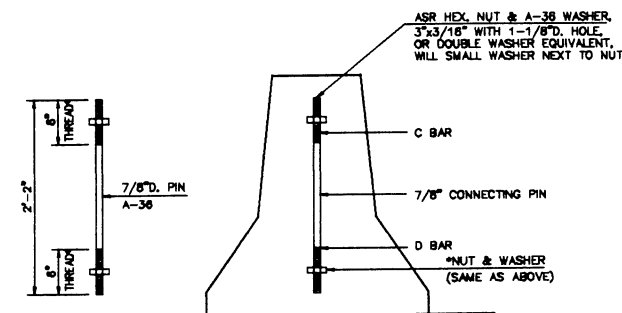
#5 REBAR C BAR



#4 REBAR B BAR



#5 REBAR D BAR



ALTERNATE CONNECTOR ASSEMBLY PIN

*COTTER PIN MAY BE USED AS AN ALTERNATE TO NUT ON 6" THREAD AT BOTTOM.

EFFECTIVE DATE: APRIL 1996

COMMONWEALTH OF PUERTO RICO DEPARTMENT OF TRANSPORTATION AND PUBLIC WORKS HIGHWAY AND TRANSPORTATION AUTHORITY			
MAINTENANCE AND PROTECTION OF TRAFFIC F SHAPE TEMPORARY CONCRETE BARRIER WITH PIN & REBAR		RECOMMENDED BY: <i>[Signature]</i> DESIGN AREA DIRECTOR DATE: <i>May 11, 96</i>	APPROVED BY: <i>[Signature]</i> EXECUTIVE DIRECTOR DATE: <i>[Signature]</i>
		APPROVED BY: <i>[Signature]</i> DIV. ADM. ENGR. & PE DIVISION DATE: <i>5/18/96</i>	
DATE	REVISION	BY	STD. MPT DWG. 4 OF 22