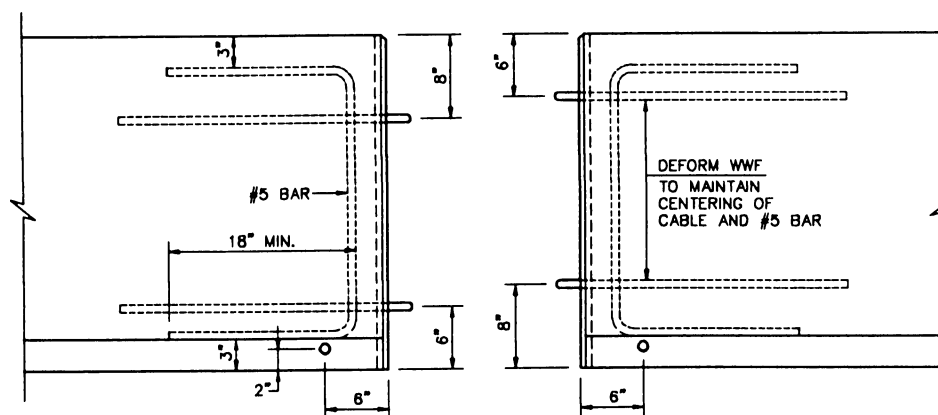
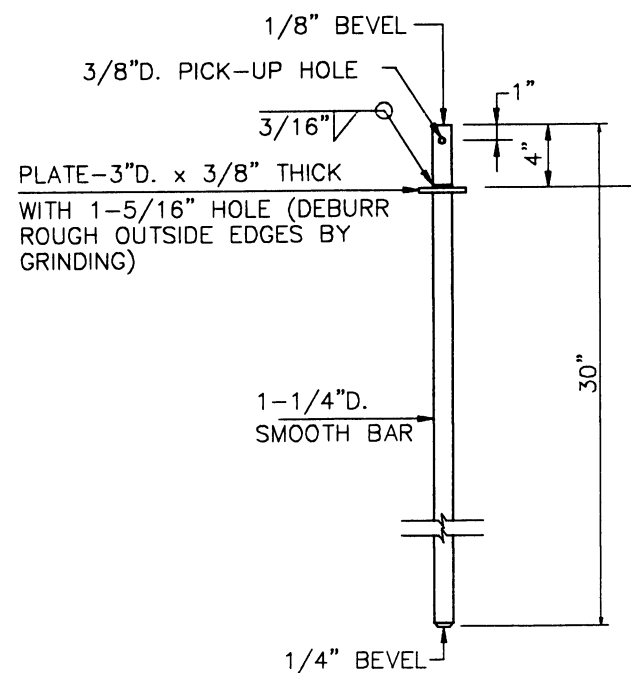


TOP VIEW

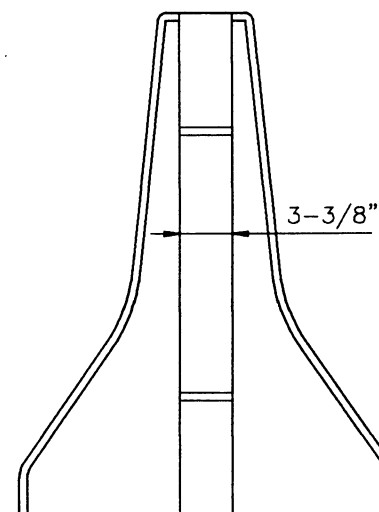


SIDE VIEW

WIRE ROPE CONNECTOR



STEEL CONNECTING PIN



END VIEW

GENERAL NOTES:

- 1 - CONCRETE SHALL HAVE A MINIMUM COMPRESSIVE STRENGTH OF 3,000 PSL.
- 2 - CONCRETE CLEAR COVER FOR REINFORCING BARS SHALL BE 1-1/2" (MIN.)
- 3 - A MINIMUM OF TWO (2) RECESSED LIFTING DEVICES SHALL BE USED ON EACH SECTION.
- 4 - TUBE STEEL SHALL BE ASTM A-500, GRADE B OR C.
- 5 - 3" x 6" DRAINAGE POCKETS - ONE REQUIRED FOR EACH SECTION.
- 6 - AFTER A BARRIER UNIT HAS BEEN PLACED AND THE CONNECTION KEY INSERTED, REMOVE ANY SLACK IN THE JOINT BY PULLING THE UNIT IN A DIRECTION PARALLEL TO ITS LONGITUDINAL AXIS.
- 7 - THE TEMPORARY CONCRETE BARRIER SHALL BE PRECAST UNITS OF 10 FEET LENGTH.
- 8 - TEMPORARY CONCRETE BARRIER SHALL BE PRECAST IN STEEL FORMS, THE REQUIREMENT FOR CURING OF SPECIFICATION 601 STRUCTURAL CONCRETE SHALL APPLY. THE BARRIER UNITS SHALL HAVE A SMOOTH FINISHED, NO RUBBING, BROOMING OR OTHER WORKING SHALL BE PERMITTED AFTER THE FORMS ARE REMOVED EXCEPT FOR NECESSARY REPAIRS WHICH SHALL BE FINISHED TO MATCH WITH THE SURROUNDING SURFACE.
- 9 - THE CONTRACTOR SHALL DESIGN THE REINFORCING STEEL FOR LIFTING AND HANDLING THE CONCRETE BARRIER SECTIONS.
- 10 - ALL BARRIER SECTIONS SHALL BE PAINTED WITH WHITE PAINT IN ACCORDANCE WITH SPECIFICATION II-P-115 F TRAFFIC PAINT, TYPE II.
- 11 - THE BARRIER SYSTEM SHALL BE INSTALLED IN A CONTINUOUS WAY AND CONNECTED TOGETHER WITH THE KEY CONNECTION DETAIL SHOWN.
- 12 - CONTRACTOR SHALL DESIGN CONNECTION OF REFLECTIVE SHEETING PLATE TO BARRIER.
- 13 - WHEN BARRIER IS PLACED ON A BRIDGE DECK WHERE THE EXISTING BRIDGE PARAPET HAS BEEN DEMOLISHED, WALL TIES AND ANCHORS AS DEPICTED ON DRAWING MPT 3 SHALL BE USED TO ANCHOR THE BARRIER TO THE BRIDGE DECK.
- 14 - REFLECTIVE SHEETING PLATES AND WHITE PAINT SHALL BE CONSIDERED AS SUBSIDIARY OBLIGATION OF THE UNDER PAY ITEMS FOR STANDARD SPEC. 638.

NOTE:

- 1 - REFLECTIVE SHEETING PLATES SHALL BE SPACED AT 10 FEET (SEE LOCATION ON DRAWING MPT 4).

EFFECTIVE DATE: APRIL 1996

COMMONWEALTH OF PUERTO RICO DEPARTMENT OF TRANSPORTATION AND PUBLIC WORKS HIGHWAY AND TRANSPORTATION AUTHORITY				
MAINTENANCE AND PROTECTION OF TRAFFIC	RECOMMENDED BY: <i>[Signature]</i> DESIGN AREA DIRECTOR DATE: <i>May 21, 96</i>			
F SHAPE TEMPORARY CONCRETE BARRIER WITH WIRE ROPE AND PIN CONNECTION	APPROVED BY: <i>[Signature]</i> EXECUTIVE DIRECTOR DATE: <i>5/18/96</i>			
DATE	REVISION	BY	STD.	MPT
			DWG.	6 OF 22