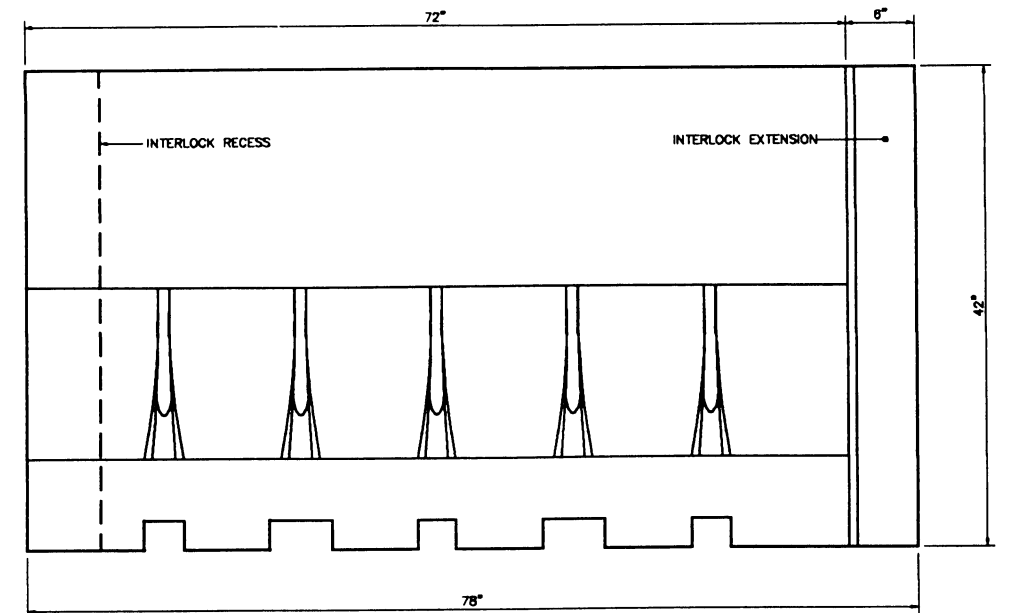
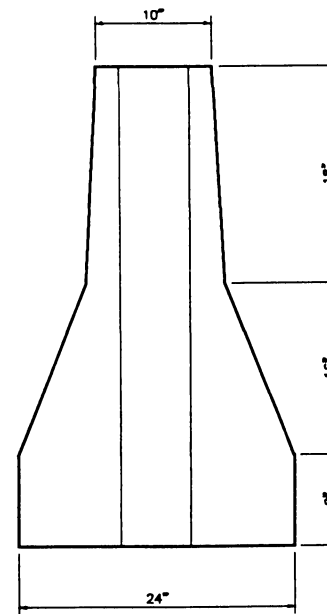


ALTERNATE 1
AS MANUFACTURED BY ENERY ABSORPTION SYSTEMS, INC.



ALTERNATE 2
AS MANUFACTURED BY THE TRIPLEX GROUP, INC.

NOTES:

- 1 - THE POLYETHYLENE BARRIER SYSTEM IS ONE ALTERNATE TO THE PORTABLE CONCRETE MEDIAN BARRIERS AND OTHER SUCH DEVICES USED TO CONTROL, DIRECT, CHANNEL AND STOP VEHICULAR AND PEDESTRIAN TRAFFIC.
- 2 - THE WEIGHT OF THE BARRIER SHALL NOT EXCEED 140 LBS. EMPTY.
- 3 - EACH SECTION SHALL BE CONSTRUCTED OF A LIGHTWEIGHT POLYETHYLENE PLASTIC SHALL BE DESIGNED TO ACCEPT WATER BALLAST OR SOLID BALLAST AND RETAIN ITS SHAPE AND STRUCTURAL INTEGRITY.
- 4 - IT SHALL BE A SUBSIDIARY OBLIGATION OF THE CONTRACTOR TO FILL AND DRAIN THE MODULES WITH WATER.
- 5 - PLASTIC BARRIER SHALL NOT BE USED ON BRIDGE DECK WHEN THE EXISTING BRIDGE PARAPET HAS BEEN DEMOLISHED. ONLY CONCRETE BARRIER USING THE WALL TIE AND ANCHOR AS THE DEPICTED ON SHEET MPT 5 OF 22 SHALL BE USED IN THIS INSTANCE.
- 6 - REFLECTIVE SHEETING PLATE SHALL BE ATTACHED WITH GLUE.

LEGEND:

- ① BARRIER SECTION
- ② PIN, CONNECTING
- ③ INDICATOR, WATER LEVEL
- ④ CABLE, TENSION
- ⑤ VALVE, GATE, QUICK-RELEASE
- ⑥ CLAMP, WIRE ROPE 3/8 W/O SADDLE
- ⑦ DECAL, TRITON
- ⑧ PLUG, 1-1/2", SCHED 40, PVC
- ⑨ ADAPTER, ABS, 1-1/2" NP1 - 1-1/2" SLIP

EFFECTIVE DATE: APRIL 1996

COMMONWEALTH OF PUERTO RICO DEPARTMENT OF TRANSPORTATION AND PUBLIC WORKS HIGHWAY AND TRANSPORTATION AUTHORITY			
MAINTENANCE AND PROTECTION OF TRAFFIC POLYETHYLENE BARRIER SYSTEM		RECOMMENDED BY: <i>[Signature]</i> DESIGN AREA DIRECTOR DATE: 11/1/96 APPROVED BY: <i>[Signature]</i> EXECUTIVE DIRECTOR DATE: 1/18/96 DIV. ADM. EHW-PR DIVISION DATE: 1/18/96	
DATE	REVISION	BY	STD. MPT
	NOTES		DWG. 9 OF 22