

**MERGING TAPER TABLE**

SPEED LIMIT(S)	WORK ZONE AREA	LENGTH (FEET) ALL LANE WIDTHS			
		10	11	12	
20	ADV. DIST. TAPER BUFFER	A L B	1,670 70 100	1,675 75 100	1,680 80 100
25	ADV. DIST. TAPER BUFFER	A L B	1,705 105 100	1,715 115 100	1,725 125 100
30	ADV. DIST. TAPER BUFFER	A L B	1,775 150 125	1,785 165 120	1,790 180 110
35	ADV. DIST. TAPER BUFFER	A L B	1,830 205 125	1,845 225 120	1,855 245 110
40	ADV. DIST. TAPER BUFFER	A L B	1,920 270 150	1,925 295 130	1,940 320 120
45	ADV. DIST. TAPER BUFFER	A L B	2,100 450 150	2,125 495 130	2,160 540 120
50	ADV. DIST. TAPER BUFFER	A L B	2,150 500 150	2,180 550 130	2,220 600 120
55	ADV. DIST. TAPER BUFFER	A L B	2,225 550 175	2,255 605 150	2,280 660 120

**NOTES:**

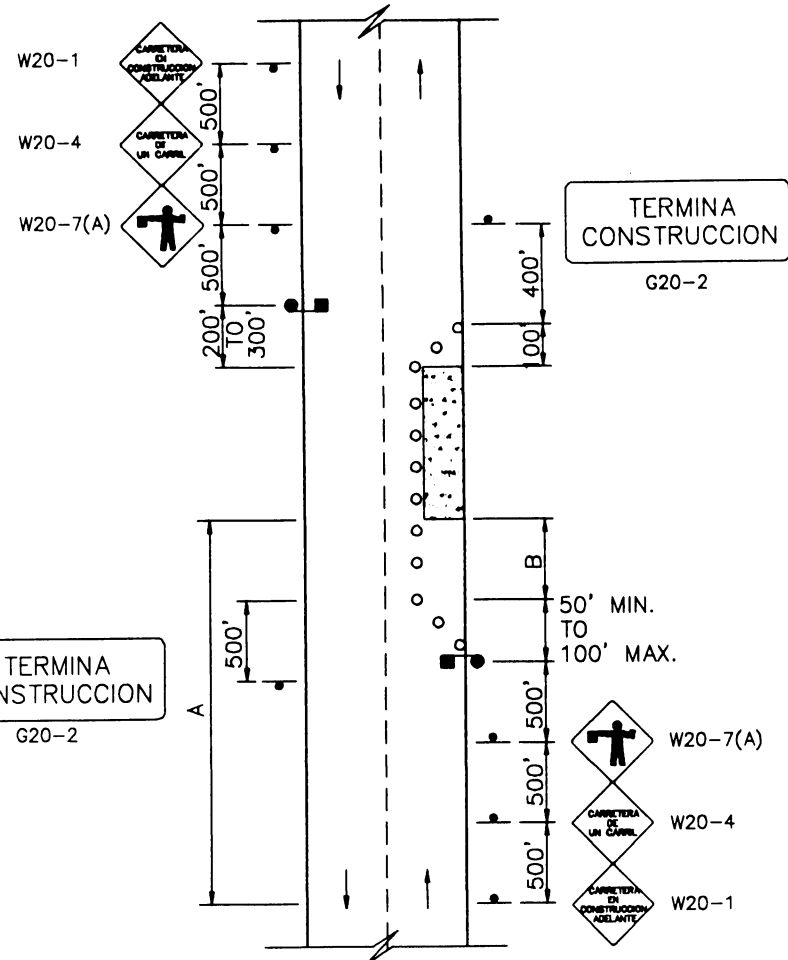
- FOR FREEWAYS OR EXPRESSWAYS, CONSULT THE MUTCD.
- USE OF AN ARROW PANEL IS OPTIONAL BASED ON TRAFFIC VOLUME, SPEED AND VISIBILITY.
- FOR THE MERGING TAPER, DEVICES SHOULD BE SPACED AT A MAXIMUM DISTANCE OF THE SPEED LIMIT IN FEET.
- FOR THE WORK AND BUFFER SPACE, DEVICES SHALL BE SPACED AT A DISTANCE OF TWICE THE SPEED LIMIT IN FEET.
- IF USED, THE DOWNSTREAM TAPER LENGTH SHOULD BE 100 FEET AND MADE UP OF FIVE DEVICES SPACED 20 FEET.

**GENERAL NOTE:**

THE DESIGN OF SIGN PLATES SHALL BE IN ACCORDANCE WITH THE "MANUAL DE SENALES DE TRANSITO PARA LAS VIAS PUBLICAS DE PUERTO RICO" AND THE STANDARD DWGS. MPT 21 AND 22

EFFECTIVE DATE: APRIL 1996

COMMONWEALTH OF PUERTO RICO DEPARTMENT OF TRANSPORTATION AND PUBLIC WORKS HIGHWAY AND TRANSPORTATION AUTHORITY	
MAINTENANCE AND PROTECTION OF TRAFFIC TYPICAL APPLICATION DIAGRAMS	RECOMMENDED BY: <i>[Signature]</i> DESIGN AREA DIRECTOR DATE: <i>May 11, 1996</i>
	APPROVED BY: <i>[Signature]</i> EXECUTIVE DIRECTOR DATE: <i>5/11/96</i>
APPROVED BY: <i>[Signature]</i> DIV. ADM. FHWA-PB DIVISION DATE: <i>5/11/96</i>	
DATE	REVISION
STD. DWG.	MPT 11 OF 22



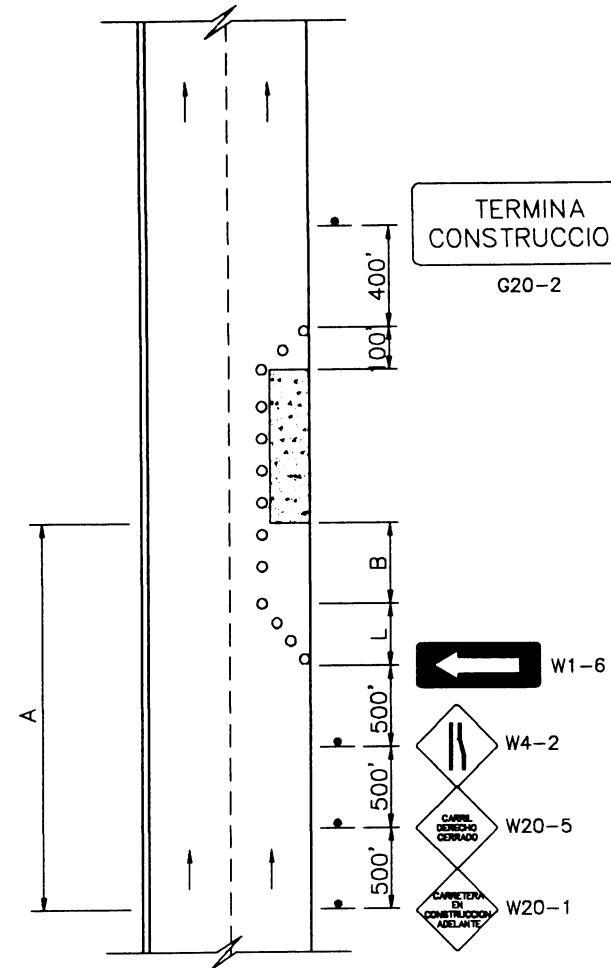
**TWO LANE TWO-WAY TRAFFIC CONTROL**

**TWO LANE: ADVANCE DISTANCE AND BUFFER TABLE**

SPEED LIMIT(S)	WORK ZONE AREA	LENGTH (FEET) ALL LANE WIDTHS
20	ADV. DIST. BUFFER	A B 1,690 90
25	ADV. DIST. BUFFER	A B 1,715 115
30	ADV. DIST. BUFFER	A B 1,750 150
35	ADV. DIST. BUFFER	A B 1,785 185
40	ADV. DIST. BUFFER	A B 1,830 230
45	ADV. DIST. BUFFER	A B 1,940 340
50	ADV. DIST. BUFFER	A B 1,970 370
55	ADV. DIST. BUFFER	A B 2,000 400

**NOTES:**

- FOR TWO LANE CITY STREETS WITH POSTED SPEED OF 35 MPH OR LESS, A 200 FOOT SIGN SPACING SHALL BE USED.
- A TWO WAY TRAFFIC TAPER SHOULD BE 50 TO 100 FEET IN LENGTH AND MADE UP OF FIVE DEVICES 20 FEET APART.
- FOR THE WORK AND BUFFER SPACE, DEVICES SHALL BE SPACED AT A DISTANCE OF TWICE THE SPEED LIMIT IN FEET.
- THE DOWNSTREAM TAPER LENGTH SHOULD BE 100 FEET AND MADE UP OF FIVE DEVICES SPACED 20 FEET APART.



**MULTILANE LANE CLOSURE**