

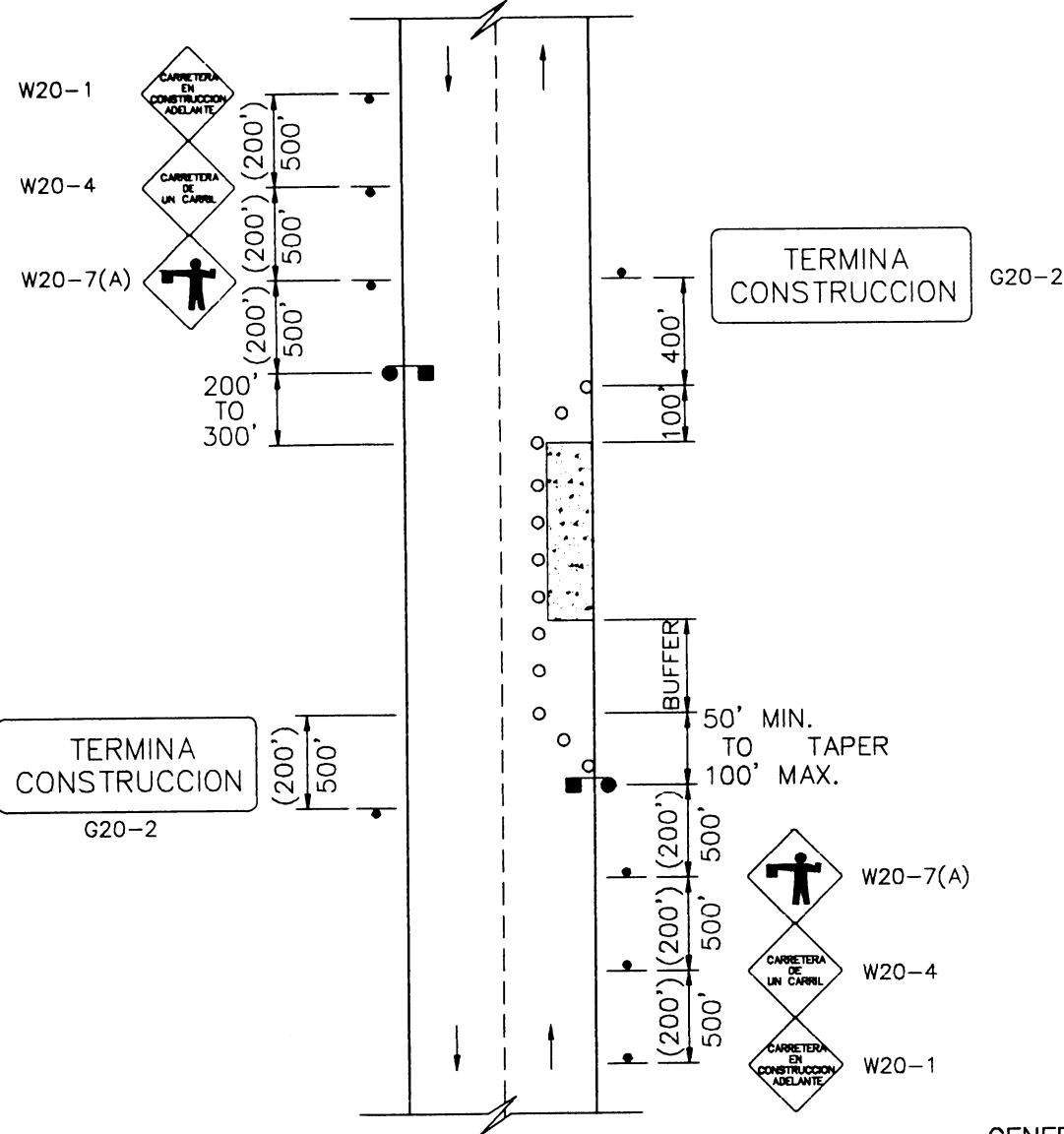
LANE CLOSURE ON A TWO-LANE LOW-VOLUME ROAD

ONE FLAGGER OPERATION

NOTES:

- 1 - A SINGLE FLAGGER MAY BE ADEQUATE FOR LOW VOLUME APPLICATIONS. WHERE ONE FLAGGER IS USED, SUCH AS FOR SHORT WORK AREAS ON STRAIGHT ROADWAYS, THE FLAGGER MUST BE VISIBLE TO APPROACHING TRAFFIC FROM BOTH DIRECTIONS.
- 2 - FOR OPERATIONS OF 60 MINUTES OR LESS, THE "CARRETERA EN CONSTRUCCION ADELANTE" SIGN (W20-1) MAY BE OMITTED.
- 3 - FOR TWO-LANE, LOW SPEED (35 MPH OR LESS) URBAN STREET, A 200' SIGN SPACING MAY BE USED.
- 4 - COST OF FLAGGER WILL BE A SUBSIDIARY OBLIGATION.

SPEED LIMIT	BUFFER (FT.)
35	200
45	350
55	400



LANE CLOSURE ON A TWO-LANE ROAD

TWO FLAGGER OPERATION

NOTES:

- 1 - FOR OPERATIONS OF 60 MINUTES OR LESS, THE "CARRETERA EN CONSTRUCCION ADELANTE" SIGN MAY BE OMITTED.
- 2 - FOR TWO-LANE, LOW-SPEED (35 MPH OR LESS) URBAN STREET, A 200' SIGN SPACING SHALL BE USED.
- 3 - GENERALLY, THE USE OF "TERMINA CONSTRUCCION" SIGNS IS OPTIONAL FOR SHORT DURATION WORK SITES. HOWEVER, IF THE WORK SITE, ITSELF, IS LONG, OR THE BEGINNING AND END OF THE WORK SITE ARE NOT VISIBLE TO A DRIVER PASSING THROUGH IT, THEN "TERMINA CONSTRUCCION" SIGNS SHOULD BE USED.
- 4 - COST OF FLAGGER WILL BE A SUBSIDIARY OBLIGATION.

SPEED LIMIT	BUFFER (FT.)
35	200
45	350
55	400

GENERAL NOTE:

THE DESIGN OF SIGN PLATES SHALL BE IN ACCORDANCE WITH THE "MANUAL DE SEÑALES DE TRANSITO PARA LAS VIAS PUBLICAS DE PUERTO RICO" AND THE STANDARD DWGS. MPT 21 AND 22

EFFECTIVE DATE: APRIL 1996

COMMONWEALTH OF PUERTO RICO
DEPARTMENT OF TRANSPORTATION
AND PUBLIC WORKS
HIGHWAY AND TRANSPORTATION AUTHORITY

RECOMMENDED BY: *[Signature]*
DESIGN AREA DIRECTOR
DATE: *4/12/96*

APPROVED BY: *[Signature]*
EXECUTIVE DIRECTOR
DATE: *4/12/96*

APPROVED BY: *[Signature]*
DIV. ADM. EHW-PR DIVISION
DATE: *4/12/96*

MAINTENANCE AND PROTECTION OF TRAFFIC
TYPICAL APPLICATION DIAGRAMS

DATE	REVISION	BY

STD. MPT
DWG. 16 OF 22