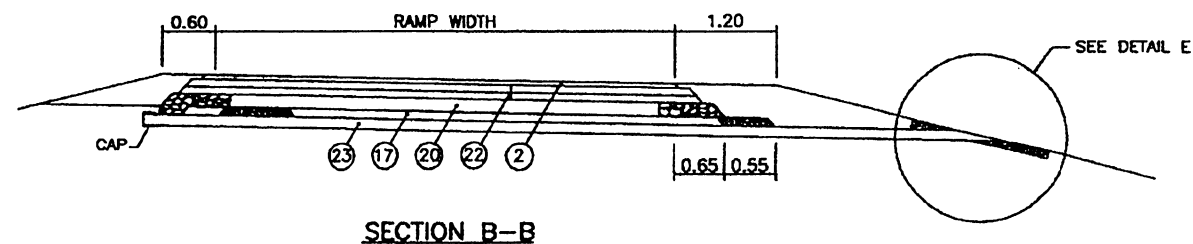
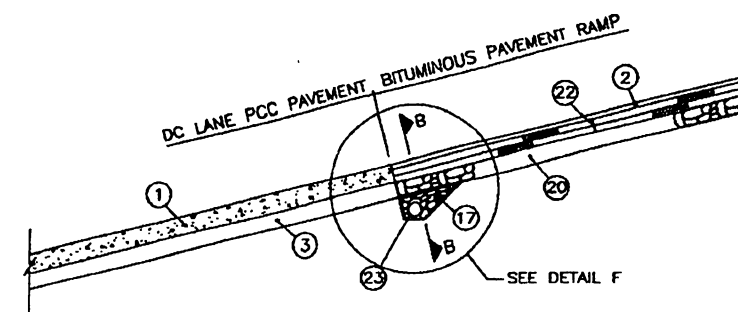


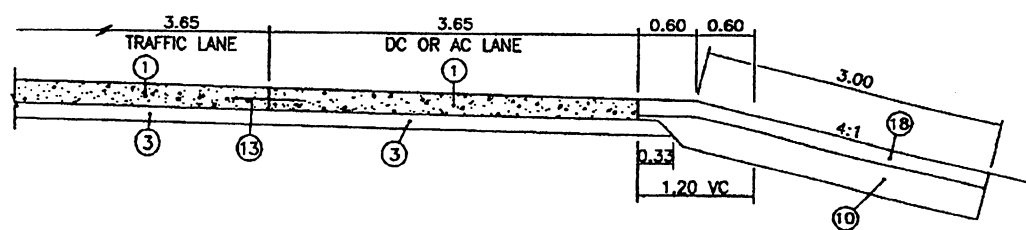
PLAN



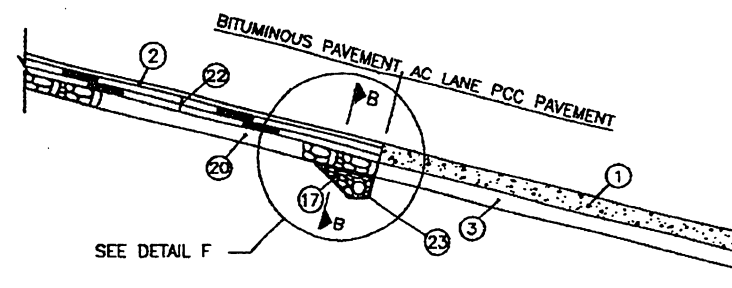
SECTION B-B



SECTION C-C
DC LANE WITH UPGRADE RAMP



SECTION A-A



SECTION D-D
AC LANE WITH DOWNGRADE RAMP

ABBREVIATURE:

VC - VERTICAL CURVE

PG - PROFILE GRADE

e - % OF SUPERELEVATION

S - % OF SLOPE

AC - ACCELERATION LANE

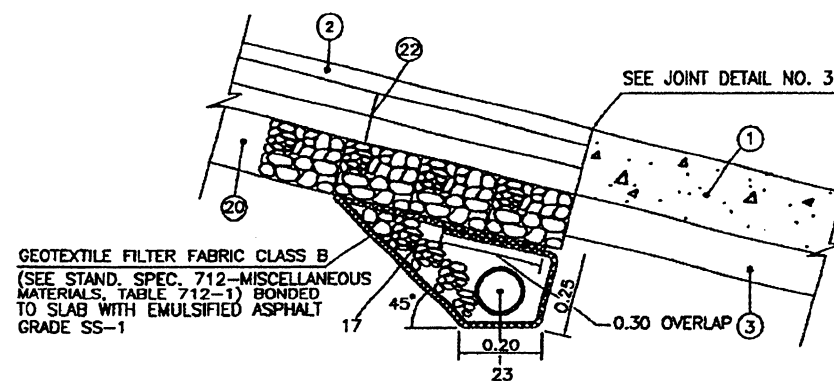
DC - DECELERATION LANE

LEGEND:

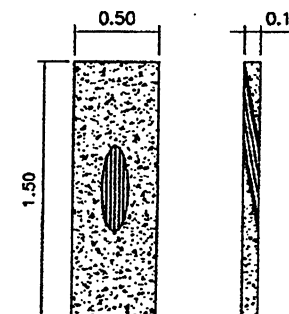
- ① 0.25 MIN. PORTLAND CEMENT CONCRETE PAVEMENT
- ② 0.05 HOT PLANT MIX BITUMINOUS PAVEMENT MIX S-1 (75)-TYPE A SHOULDER
- ③ 0.10 HOT PLANT MIX BITUMINOUS PAVEMENT MIX B-1 (75)
- ④ 0.075 HOT PLANT MIX BITUMINOUS PAVEMENT MIX B-1 (75)
- ⑩ 0.30 BORROW CLASS D
- ⑬ SEE DETAIL ON DWG. PCCP 4 OF 6
- ⑰ FILTER MATERIAL TYPE B (SEE STAND. SPECS. 718-STONE REVETMENT MATERIALS, TABLE 718-1)
- ⑱ 0.15 TOPSOIL
- ⑳ 0.125 AGGREGATE BASE COURSE, GRADING CLASS D FOR TYPE A SHOULDER
- ㉒ 0.20 HOT PLANT MIX BITUMINOUS PAVEMENT MIX B-1 (75) TO BE LAID IN TWO COURSES
- ㉓ 4 INCH PIPE UNDERDRAIN TYPE 4

NOTE:

4 INCH PERFORATED PVC PIPE UNDERDRAIN ASTM-D 3033 PERFORATION SHALL MEET REQUIREMENTS OF ASTM-C 508



DETAIL F
4 INCH PIPE UNDERDRAIN TYPE 4



DETAIL E

EFFECTIVE DATE: MAY 1998

COMMONWEALTH OF PUERTO RICO
DEPARTMENT OF TRANSPORTATION AND PUBLIC WORKS
HIGHWAY AND TRANSPORTATION AUTHORITY

RECOMMENDED BY: [Signature]

DESIGN AREA DIRECTOR

DATE: [Date]

APPROVED BY: [Signature]

EXECUTIVE DIRECTOR

DATE: [Date]

APPROVED BY: [Signature]

DIR. ADM. FLOWA-PR DIVISION

DATE: [Date]

PORTLAND CEMENT CONCRETE PAVEMENT

AC AND DC LANES

DATE	REVISION	BY
5-12-98	SECTIONS B-B, C-C AND D-D	LV.

STD. DWG. PCCP 6 OF 6