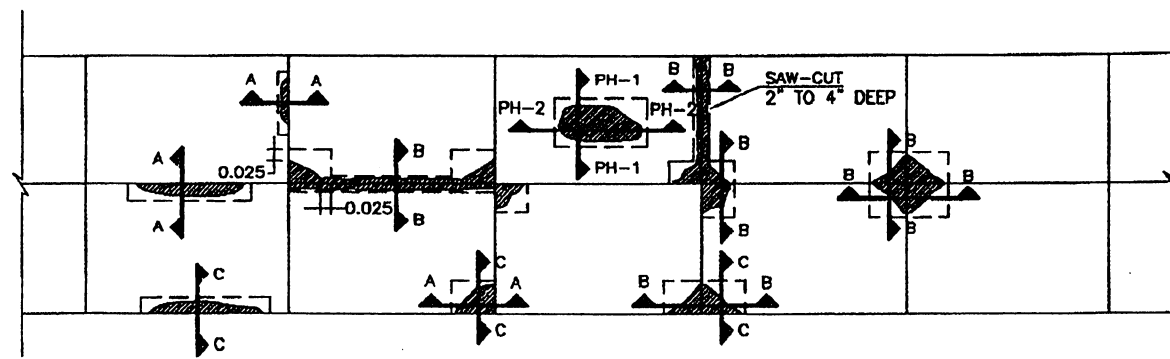
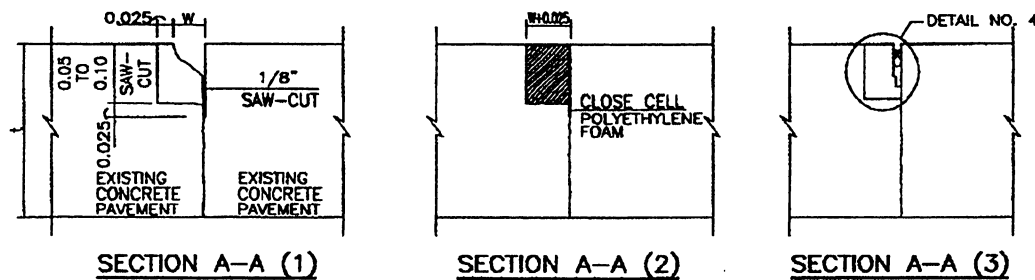


**EXISTING DISTRESS CONDITIONS
SMALL CORNER BREAK AND SPALL AT JOINTS**

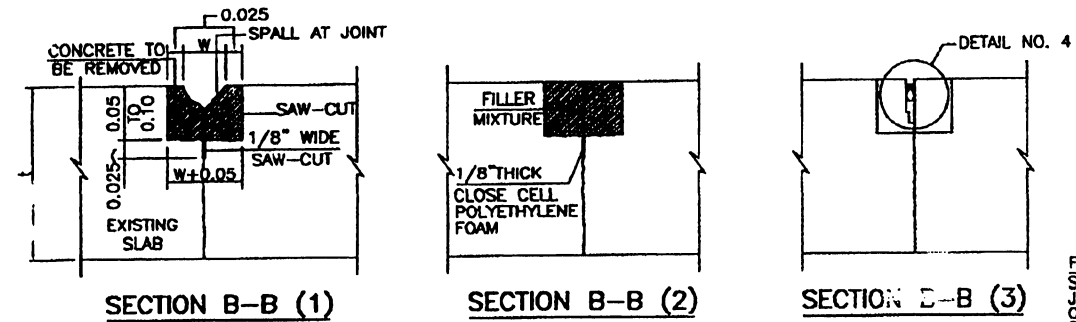


RECOMMENDED REPAIR FOR ABOVE DISTRESS CONDITIONS



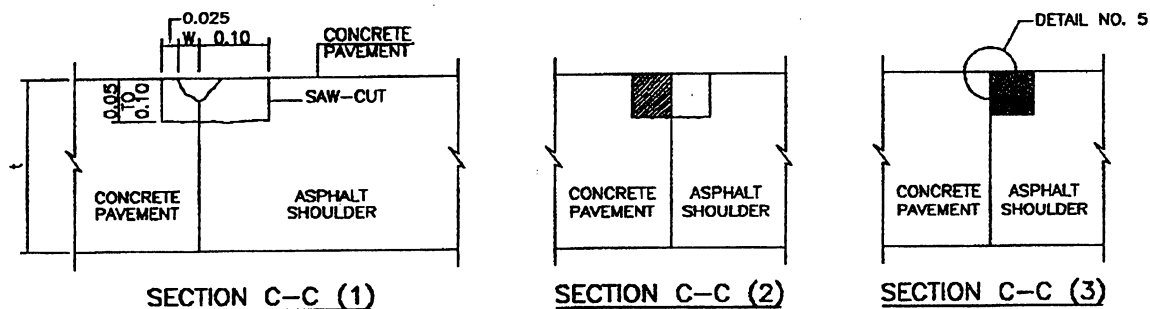
**SPALL OR CORNER BREAK AT ONE SIDE OF
TRANSVERSE OR LONGITUDINAL JOINT**

- | | | |
|---|--|---|
| <p>(1)</p> <ol style="list-style-type: none"> 1 - SAW-CUTS INCLUDING 1/8" JOINT CUT (DEPTH OF SPALL + 0.025). 2 - REMOVE AND DISPOSE OF CONCRETE, ASPHALT SEALANT OR BITUMINOUS PATCH. 3 - CLEAN SURFACES BY WATER BLASTING. | <p>(2)</p> <ol style="list-style-type: none"> 4 - INSTALL THE CLOSE CELL POLYETHYLENE FOAM. 5 - COAT WALLS AND FLOOR OF REPAIR AREA WITH APPROVED EPOXY BONDING AGENT. 6 - POUR THE PATCHING MIXTURE. | <p>(3)</p> <ol style="list-style-type: none"> 7 - CONSTRUCT THE NEW JOINT SEE DETAIL NO. 4 |
|---|--|---|



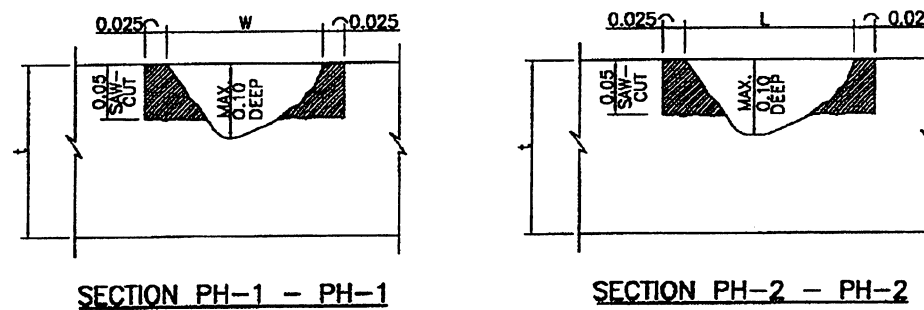
**JOINT SPALL REPAIR ON BOTH SIDES OF TRANSVERSE
OR LONGITUDINAL JOINTS-SEQUENCE OF CONSTRUCTION**

- | | | |
|---|---|---|
| <p>(1)</p> <ol style="list-style-type: none"> 1 - SAW-CUTS INCLUDING THE 1/8" WIDE CUT AT JOINT 0.025 CM. DEEPER THAN THE REPAIR CUT. 2 - REMOVE AND DISPOSE OF CONCRETE OR BITUMINOUS PATCH. 3 - CLEAN SURFACE BY WATER-BLASTING. | <p>(2)</p> <ol style="list-style-type: none"> 4 - INSTALL THE POLYETHYLENE FOAM. 5 - COAT WALLS AND FLOOR OF REPAIR AREA WITH APPROVED EPOXY BONDING AGENT. 6 - POUR THE PATCHING MIXTURE. | <p>(3)</p> <ol style="list-style-type: none"> 7 - REMOVED FOAM. 8 - SAW-CUT WALLS OF JOINT TO PROVIDE MINIMUM OF 3/8" WIDTH 9 - CONSTRUCT NEW JOINT SEE DETAIL NO. 4 |
|---|---|---|



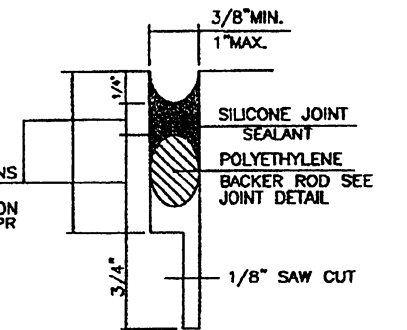
**SPALL AT PAVEMENT/SHOULDER JOINT
SEQUENCE OF CONSTRUCTION**

- | | | |
|--|--|---|
| <p>(1)</p> <ol style="list-style-type: none"> 1 - MAKE SAW-CUTS AT CONCRETE AND ASPHALT PAVEMENT. 2 - REMOVE AND DISPOSE OF CONCRETE AND SHOULDER MATERIAL. 3 - CLEAN SURFACES BY WATER BLASTING. | <p>(2)</p> <ol style="list-style-type: none"> 4 - COAT WALLS AND FLOOR OF REPAIR AREA WITH APPROVED EPOXY BONDING AGENT. 5 - PLACE FORMS AND POUR THE PATCHING MIXTURE SPECIFIED FOR PARTIAL DEPTH PATCHING. | <p>(3)</p> <ol style="list-style-type: none"> 6 - REPAIR THE SHOULDER WITH A SIMILAR MATERIAL OF THE EXISTING SHOULDER. 7 - SAW-CUT 5/8" JOINT. 8 - CONSTRUCT PAVEMENT/SHOULDER JOINT (SEE DETAIL NO. 5) |
|--|--|---|

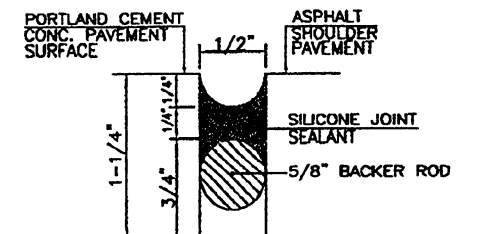


- | | |
|---|---|
| <p>(1)</p> <ol style="list-style-type: none"> 1 - MAKE SAW-CUT 0.05 DEEP AND 0.025 FROM EDGE OF HOLE PARALLEL TO THE LONGITUDINAL AND TRANSVERSE JOINTS. 2 - REMOVE AND DISPOSE OF CONCRETE AND BITUMINOUS PATCH. 3 - CLEAN SURFACE BY WATER BLASTING. | <p>(2)</p> <ol style="list-style-type: none"> 4 - COAT WALLS AND FLOOR OF REPAIR AREA WITH APPROVED EPOXY BONDING AGENT. 5 - POUR THE PATCHING MIXTURE. |
|---|---|

FOR DIMENSIONS SEE TABLE OF JOINT DIMENSION ON DWG. PCCPR 2 OF 4



DETAIL NO. 4



DETAIL NO. 5

LONGITUDINAL JOINT OF PORTLAND CEMENT CONCRETE PAVEMENT WITH ASPHALT SHOULDER PAVEMENT

NOTE:

THE CONTRACTOR SHALL USE A CLOSE CELL POLYETHYLENE FOAM BOARD, STYROFOAM BOARD OR ASPHALT IMPREGNATED BOARD TO FORM LONGITUDINAL AND TRANSVERSE JOINTS. THE BOARD SHALL EXTEND 25 MM BELOW AND 75 MM BEYOND EACH END OF THE PATCH AREA. THE BOARD SHALL BE PROVIDED AS A SUBSIDIARY OBLIGATION.

EFFECTIVE DATE: MAY 1998

COMMONWEALTH OF PUERTO RICO DEPARTMENT OF TRANSPORTATION AND PUBLIC WORKS HIGHWAY AND TRANSPORTATION AUTHORITY		
PCC PAVEMENT RESTORATION PARTIAL DEPTH PATCHING		RECOMMENDED BY: <i>[Signature]</i> DESIGN AREA DIRECTOR DATE: _____ APPROVED BY: <i>[Signature]</i> EXECUTIVE DIRECTOR DATE: 5-12-98 APPROVED BY: <i>[Signature]</i> ADM. ADM. ENGINEER DIVISION DATE: 5-15-98
DATE	REVISION	BY
5-12-98	ADDED NOTE	L.V.
STD. PCCPR DWG. 3 OF 4		