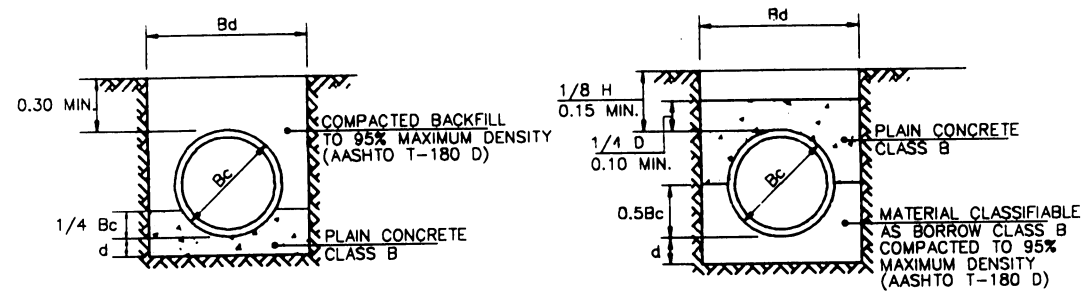


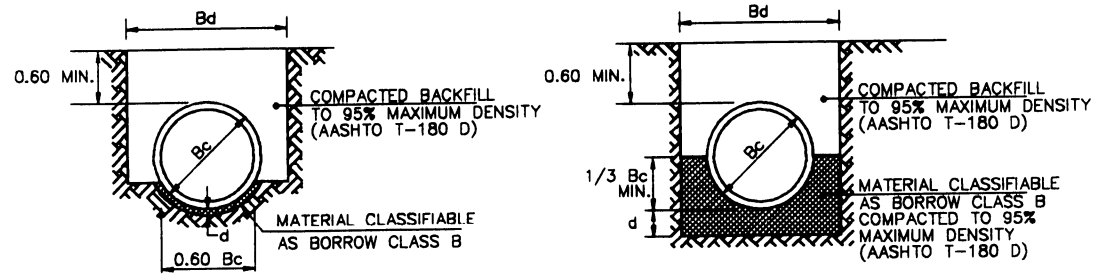
CIRCULAR PIPE



CONCRETE CRADLE

CLASS A

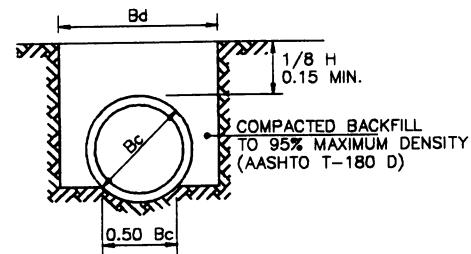
CONCRETE ARCH



SHAPED SUBGRADE WITH GRANULAR FOUNDATION

CLASS B

GRANULAR FOUNDATION



SHAPED SUBGRADE

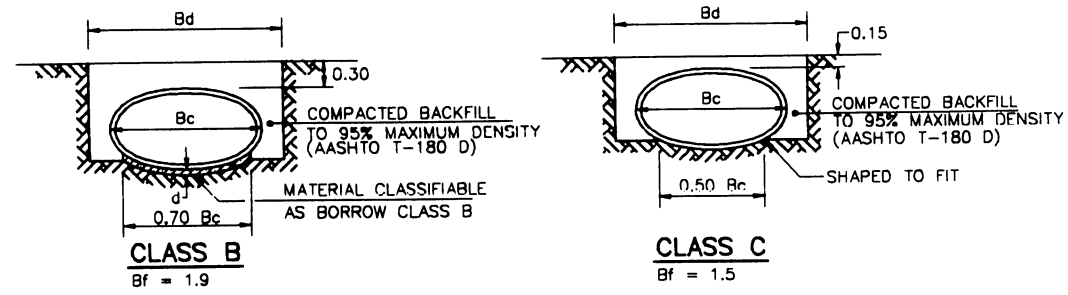
CLASS C

DEPTH OF BEDDING MATERIAL BELOW PIPE	
D	d (MIN.)
27" & SMALLER	0.075m.
30" TO 60"	0.10m.
66" & LARGER	0.15m.

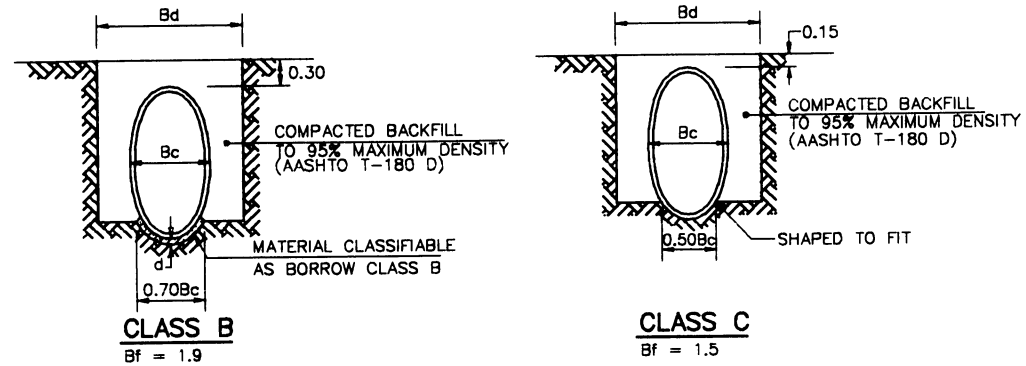
LEGEND:

Bd - MAXIMUM TRENCH WIDTH = Bc + 0.90
 Bc - OUTSIDE DIAMETER OR OUTSIDE HORIZONTAL SPAN OF THE PIPE
 H - HEIGHT OF FILL ABOVE TOP OF PIPE
 D - INSIDE DIAMETER
 d - DEPTH OF BEDDING MATERIAL BELOW PIPE
 Bf - BEDDING FACTOR

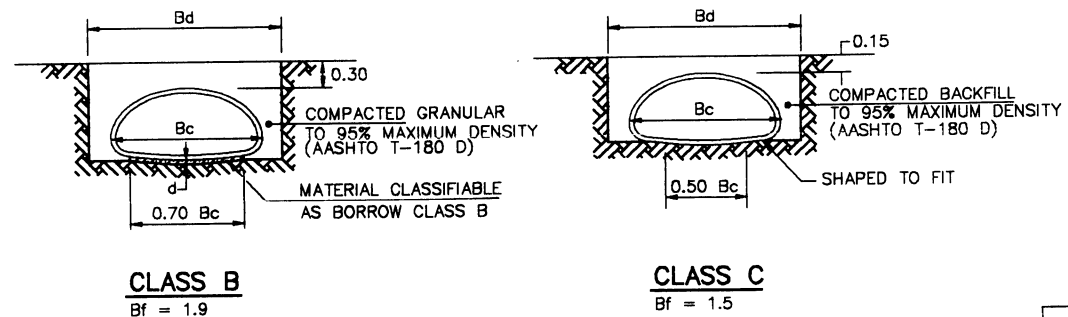
ELLIPTICAL AND ARCH PIPE



HORIZONTAL ELLIPTICAL PIPE



VERTICAL ELLIPTICAL PIPE

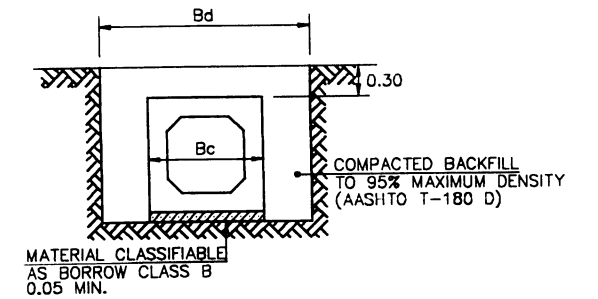


ARCH PIPE

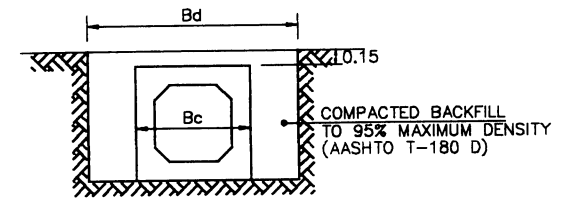
NOTES:

- FOR CLASS B AND C BEDDINGS, SUBGRADES SHOULD BE EXCAVATED OR OVER EXCAVATED IF NECESSARY, SO A UNIFORM FOUNDATION FREE OF PROTRUDING ROCKS SHALL BE PROVIDED.
- SPECIAL CARE MAY BE NECESSARY WITH CLASS A OR OTHER UNYIELDING FOUNDATION TO CUSHION PIPE FROM SHOCK WHEN BLASTING CAN BE ANTICIPATED IN THE AREA.
- FOR BACKFILL MATERIAL SEE STANDARD SPECIFICATION 205-3.07

PRECAST CONCRETE BOX SECTIONS



CLASS B



CLASS C

EFFECTIVE DATE: APRIL 1996

COMMONWEALTH OF PUERTO RICO
 DEPARTMENT OF TRANSPORTATION AND PUBLIC WORKS
 HIGHWAY AND TRANSPORTATION AUTHORITY

REINFORCED CONCRETE PIPE INSTALLATION METHODS
 TRENCH BEDDINGS

DESIGN AREA DIRECTOR
 DATE: May 21, 96
 APPROVED BY:
 EXECUTIVE DIRECTOR
 DATE:
 APPROVED BY:
 DIV. ADM. FINA-PR DIVISION
 DATE: 5/24/96

DATE	REVISION	BY
30/10/95	NOTE 4 WAS DELETED	

STD. RCP
 DWG. 3 OF 4