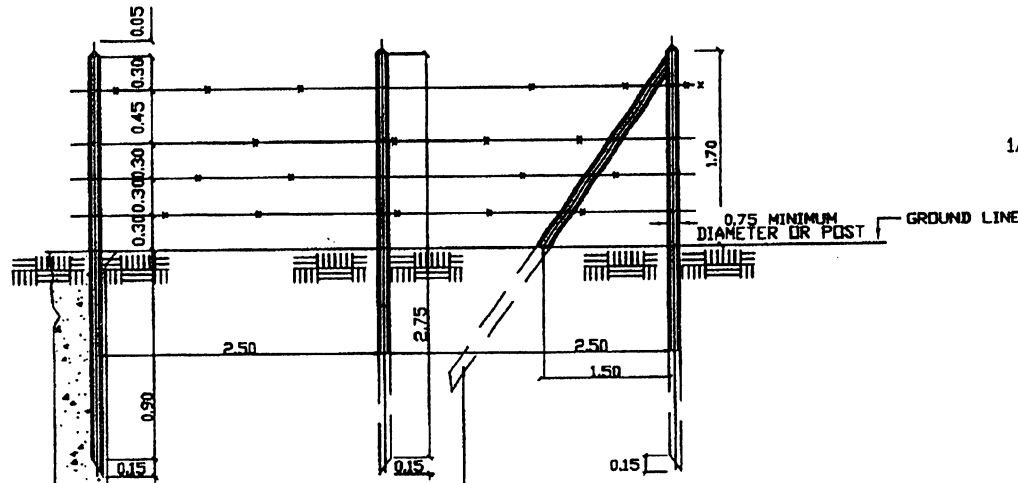


**TYPE 'A'**  
PRECAST REINFORCED CONCRETE POST  
SCALE: 1/20

STAY POST TO BE PLACED EVERY FIFTH POST  
PLACE TWO STAYS FOR EVERY FENCE  
CORNER

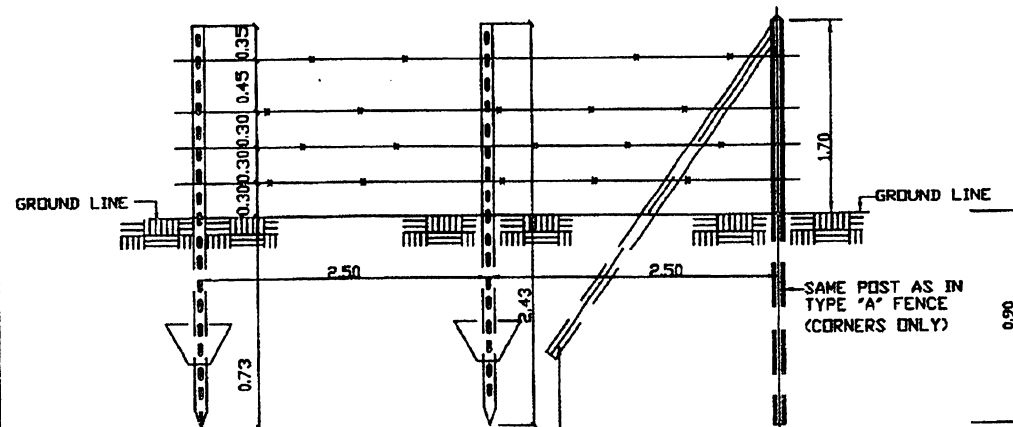


**TYPE 'B'**  
TIMBER POST  
SCALE: 1/20

BACKFILLED WITH SUITABLE MATERIAL  
THOROUGHLY TAMPED LAYERS.

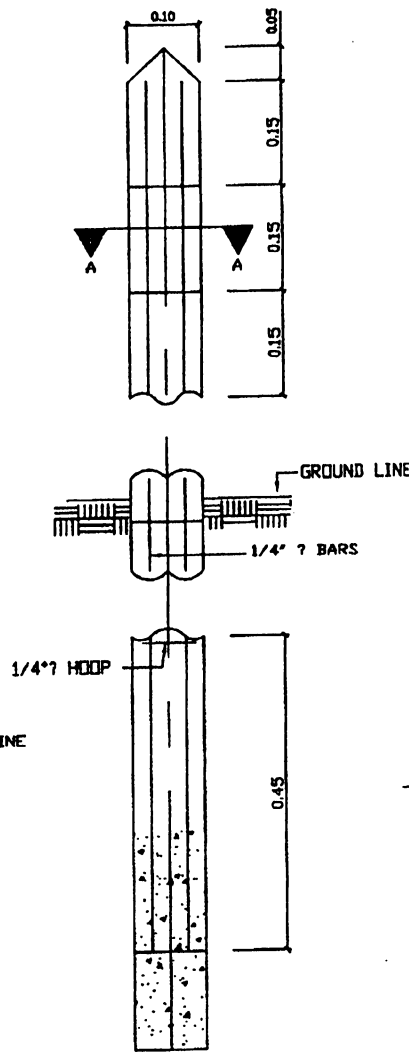
STAY POST TO BE PLACED EVERY FIFTH POST  
PLACE TWO STAYS FOR EVERY FENCE  
CORNER

0.75 MINIMUM  
DIAMETER OR POST

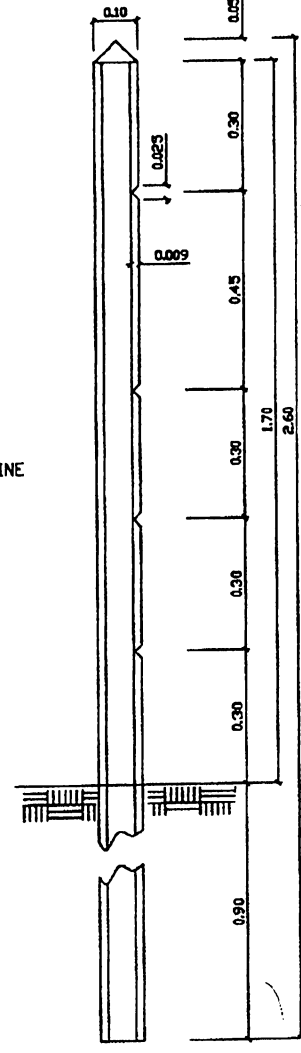


**TYPE 'C' WITH STEEL POSTS AND PRECAST RFD. CONC. POSTS**  
SCALE: 1/20

STAY POSTS TO BE PLACED AT CORNERS  
ONLY WHERE REINFORCED CONCRETE POSTS  
WILL BE USED.  
PLACE TWO STAYS FOR EVERY FENCE  
CORNER.



**TYPICAL SECTION**  
SCALE: 1/50

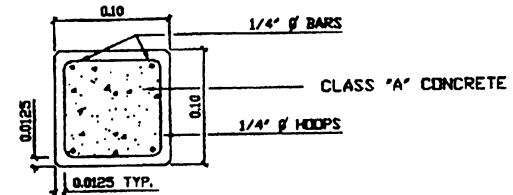


**PARTIAL ELEVATION**  
SCALE: 1/80

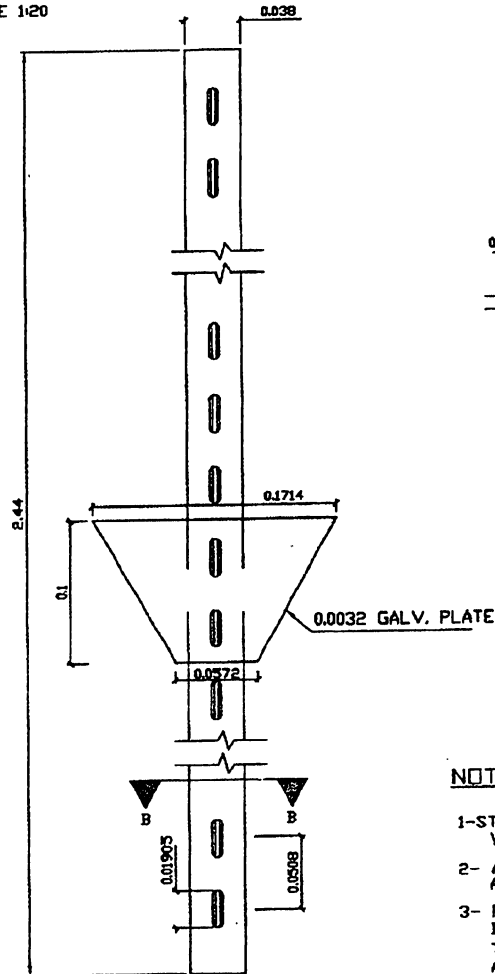
**CONCRETE POST  
DETAILS**

**NOTES:**

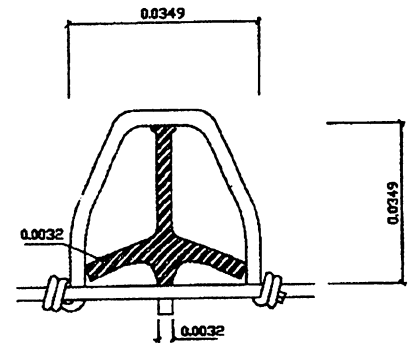
- 1- USE HOT DIP GALVANIZED BARBED WIRE 0.3175 GAUGE OR SIMILAR FOR ALL TYPES OF FENCES.
- 2- CLASS 'A' CONCRETE SHALL BE USED IN POSTS FOR TYPE 'A' FENCES.
- 3- ANY KIND OF LUMBER APPROVED BY THE HIGHWAY AUTHORITY IS ACCEPTABLE
- 4- USE APPROVED GALVANIZED WIRE FASTENERS FOR TYPE 'B' FENCE, 9 GAUGE MINIMUM



**SECTION A-A**  
SCALE: 1/20



**STEEL POST  
DETAILS**  
SCALE: 1/20



**SECTION B-B**  
SHOWING WIRE CLAMP  
FULL SIZE

**NOTES: (STEEL POST FENCE)**

- 1- STEEL POSTS WILL BE 2.4384m IN LENGTH WITH A TOTAL WEIGHT OF 5.1301 KG. PER POST.
- 2- ANCHOR PLATES WILL HAVE AN AREA OF 0.0128 m<sup>2</sup> AND A MINIMUM WEIGHT OF 0.3039 KG.
- 3- FOR INSTALLATION OF BARBED WIRE USE SPECIALLY DESIGNED WIRE CLAMPS CURRENTLY FURNISHED WITH THIS TYPE OF POST. (SEE SECTION B-B ABOVE) AND 9 GAUGE MINIMUM.

EFFECTIVE DATE: OCTOBER 1997

COMMONWEALTH OF PUERTO RICO  
DEPARTMENT OF TRANSPORTATION  
AND PUBLIC WORKS  
HIGHWAY AND TRANSPORTATION AUTHORITY

**FENCES AND GATES  
BARBED WIRE FENCE**

RECOMMENDED BY: *[Signature]*  
DESIGN AREA DIRECTOR  
DATE: 2-13-97

APPROVED BY: *[Signature]*

EXECUTIVE DIRECTOR  
DATE: 2-22-97

APPROVED BY: *[Signature]*

DIV. ADM. FHWA-PR DIVISION  
DATE: 9-15-97

DATE	REVISION	BY	STD. DWG.	FEQA
				1 OF 4