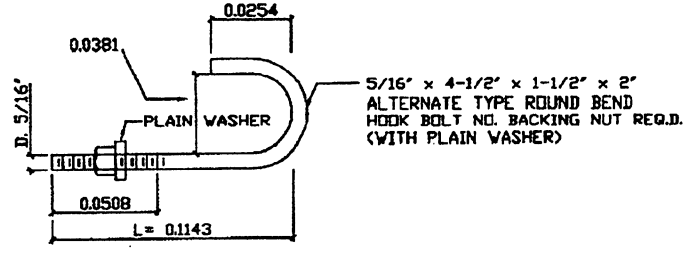


TYPICAL ELEVATION
NOT TO SCALE

1 x 7-3/8" GALVANIZED STEEL STRAND MIN.
STRENGTH IN KGS. 1927.77 KG.

TYPICAL FASTENER
Ø 0.61 CC No. 10 GAUGE



ALTERNATES	
WIRE MESH-ALUMINUM-COATED STEEL FABRIC	
INTERMEDIATE 'H' TYPE 1.875' X 1.625' POST	MIN. WEIGHT 2.80# Ln. Ft.

EFFECTIVE DATE: OCTOBER 1997

COMMONWEALTH OF PUERTO RICO
DEPARTMENT OF TRANSPORTATION
AND PUBLIC WORKS
HIGHWAY AND TRANSPORTATION AUTHORITY

RECOMMENDED BY: *[Signature]*
DESIGN AREA DIRECTOR
DATE: 7-13-97

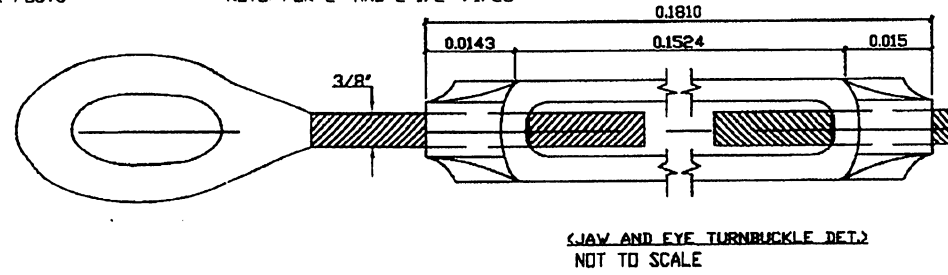
APPROVED BY: *[Signature]*
EXECUTIVE DIRECTOR
DATE: 9-25-97

APPROVED BY: *[Signature]*
DIV. ADM. FHWA-PR DIVISION
DATE: 9-25-97

FENCES AND GATES
WIRE MESH FENCE
(FOR ACCESS CONTROL)

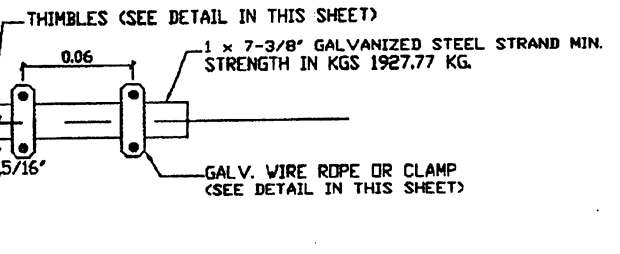
DATE	REVISION	BY

STD. DWG. FEQA
4 OF 4



JAW AND EYE TURNBUCKLE DET.
NOT TO SCALE

ALUMINUM RAIL TIE STAPLES (NO.10)
(TOP & BOTTOM)
NOT TO SCALE



SKETCH SHOWING THIMBLE
AND CABLE ASSEMBLY
NOT TO SCALE

NOTE:
CABLE SHALL BE PLACED SO
CLAMP NUTS EXTEND
OUTSIDE THE R/W

BOTTOM WIRE ROPE TIE TO
FENCE POST NO. 10 GAUGE
NOT TO SCALE

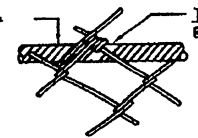
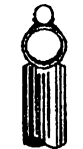
3/8" GALVANIZED
WIRE ROPE CLAMP DET.
NOT TO SCALE

GALVANIZED WROUGHT STEEL DETAILS
REGULAR WIRE ROPE THIMBLES
NOT TO SCALE

ACORN TOP FOR ENDS
OR CORNER POSTS

LINE & PULL POSTS TOPS
NOTE: FOR 2" AND 2 1/2" PIPES

TENSION BAND (N.T.S.)



5/16" HOOK BOLT