

**GABION BASKET**

**TABLE 1. TYPICAL GABION BASKET SIZES**

LENGTH	WIDTH		HEIGHT, FT		NUMBER OF CELLS	VOLUME FT <sup>3</sup>	VOLUME M <sup>3</sup>
	FT	M	FT	M			
6	1.83	3	0.91	3	2	54	1.53
9	2.74	3	0.91	3	3	81	2.29
12	3.66	3	0.91	3	4	108	3.06
6	1.83	3	0.91	1.5	2	27	0.76
9	2.74	3	0.91	1.5	3	41	1.15
12	3.66	3	0.91	1.5	4	54	1.53
6	1.83	3	0.91	1	2	18	0.50
9	2.74	3	0.91	1	3	27	0.76
12	3.66	3	0.91	1	4	36	1.02

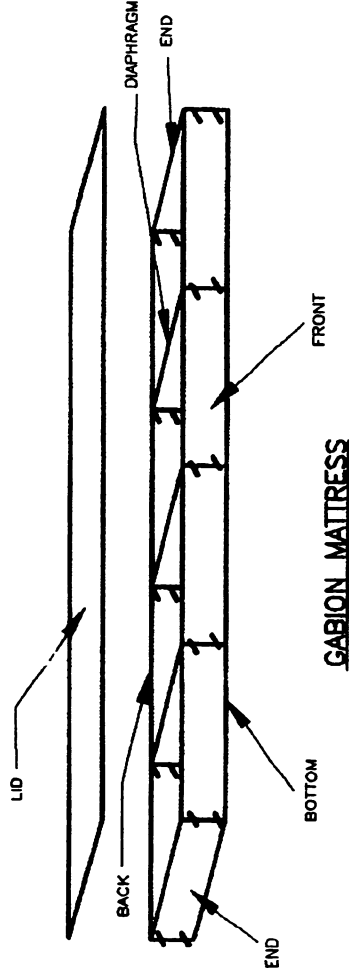
**TABLE 2. TYPICAL GABION MATTRESS SIZES**

LENGTH	WIDTH		HEIGHT, FT		NUMBER OF CELLS	AREA FT <sup>2</sup>	VOLUME FT <sup>3</sup>	VOLUME M <sup>3</sup>	
	FT	M	FT	M					
9	2.74	6	0.5	0.15	3	54	5.02	27	0.77
12	3.66	6	0.5	0.15	4	72	6.69	36	1.02
9	2.74	6	0.75	0.23	3	54	5.02	41	1.15
12	3.66	6	0.75	0.23	4	72	6.69	54	1.53
9	2.74	6	1.0	0.30	3	54	5.02	54	1.53
12	3.66	6	1.0	0.30	4	72	6.69	72	2.04

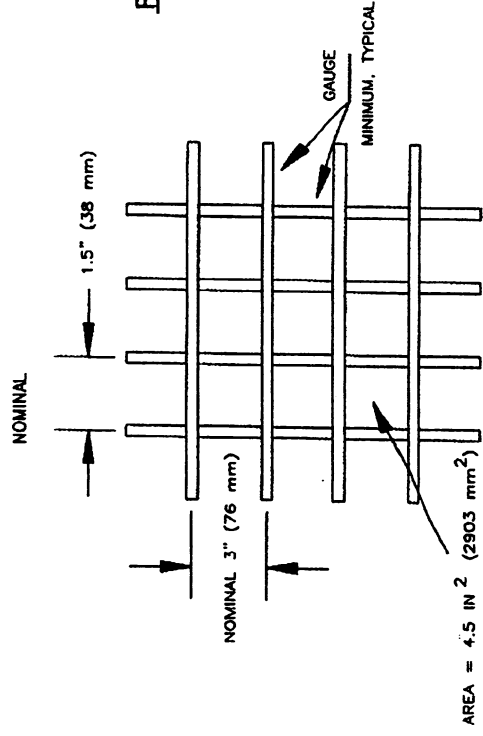
**TABLE 3. WIRE DIAMETERS**

WIRE FOR PVC-COATED GABIONS WIRE FOR GABION MATTRESSES SPIRAL BINDERS FOR GABIONS: PVC-COATED SPIRAL BINDERS FOR GABIONS MATTRESSES, PVC-COATED LACING WIRE STIFFENERS: LACING WIRE PREFORMED	MINIMUM DIAMETER PVC-COATED WIRE (INCLUDING COATING) <sup>A</sup>		MINIMUM DIAMETER, PVC-COATED WIRE (INCLUDING COATING) <sup>B</sup>	
	in	mm	in	mm
	0.136	3.45	0.146	3.70
	0.117	2.97	0.127	3.23
	0.136	3.45	0.146	3.70
	0.117	2.97	0.127	3.23
	0.117	2.97	0.127	3.23
	0.117	2.97	0.127	3.23
	0.150	3.81	0.160	4.06

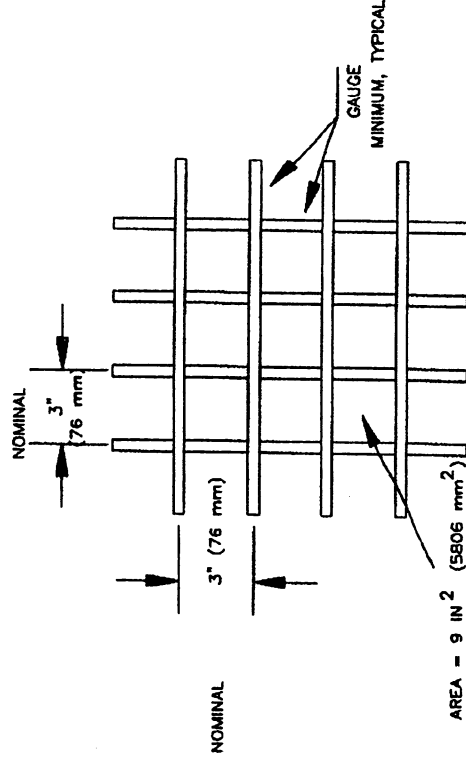
<sup>A</sup> THE MINIMUM THICKNESS OF PVC WHICH COVERS THE WIRE SHALL BE 15 MILS (0.015 IN OR 0.38 MM), MEASURED RADIIALLY AT ANY CROSS SECTION TRANSVERSE TO THE WIRE LENGTH.  
<sup>B</sup> THE NOMINAL THICKNESS OF PVC WHICH COVER THE WIRE SHALL BE 20 MILS (0.020 IN OR 0.51 MM), MEASURED RADIIALLY AT ANY CROSS SECTION TRANSVERSE TO THE WIRE LENGTH.



**GABION MATTRESS**



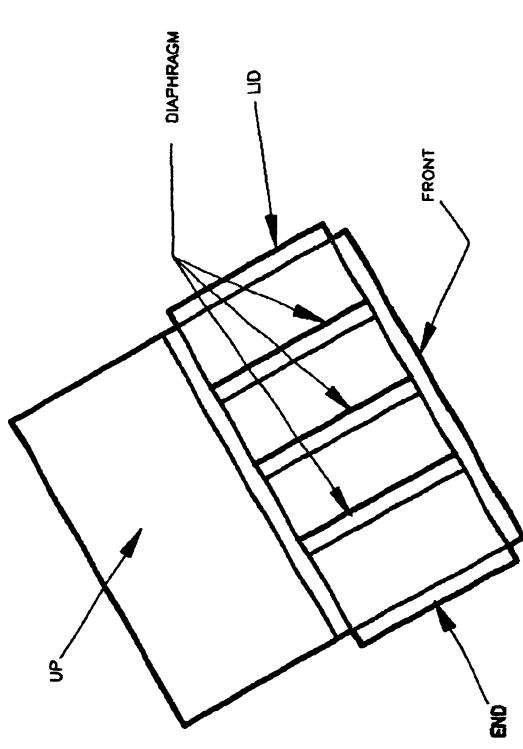
**WIRE MESH FOR GABION MATTRESS**



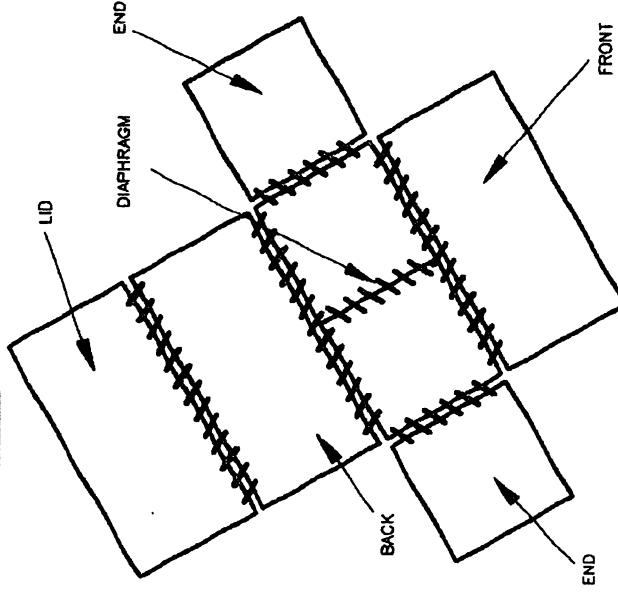
**WIRE MESH FOR GABION BASKETS**

**NOTES:**

1. ALL WELDED WIRE GABIONS AND MATTRESSES SHALL COMPLY WITH ASTM A974.
2. ALL GABIONS AND MATTRESSES MUST BE PVC-COATED AFTER WELDING ACCORDING TO STYLE 5 IN THE ASTM A974.
3. THE TERMS "MATTRESS", "REVET MATTRESS" AND "GABION MATTRESS" ARE EQUIVALENT.
4. GABIONS SHALL CONSIST OF WELDED WIRE FABRIC, SPIRAL BINDERS, LACING WIRES, AND STIFFENERS MADE FROM WIRE WHICH IS ZINC-COATED BEFORE BEING WELDED AND OVERCOATED WITH PVC.



**PRE-ASSEMBLED-GABION MATTRESS**



**PRE-ASSEMBLED GABION BASKET**

EFFECTIVE DATE: JULY 2000

COMMONWEALTH OF PUERTO RICO  
DEPARTMENT OF TRANSPORTATION  
AND PUBLIC WORKS  
HIGHWAY AND TRANSPORTATION AUTHORITY

RECOMMENDED BY:  
*[Signature]*  
DESIGN AREA DIRECTOR  
DATE: *[Date]*  
APPROVED BY:  
*[Signature]*  
EXECUTIVE DIRECTOR  
DATE: *[Date]*

**GABIONS  
WELDED WIRE GABION  
DIMENSIONS**

DATE	REVISION	BY

STD. GABI  
DWG. 1 OF 20