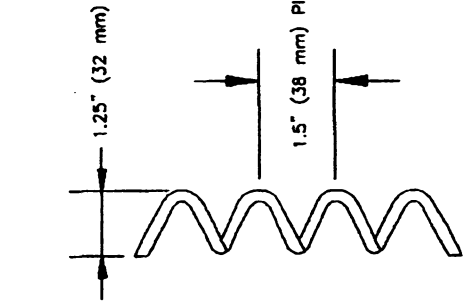


WELDED WIRE GABIONS

SPIRAL BINDERS

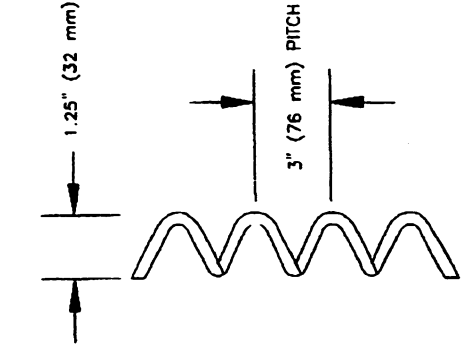


LESS THAN 1 FT (305 mm) HEIGHT

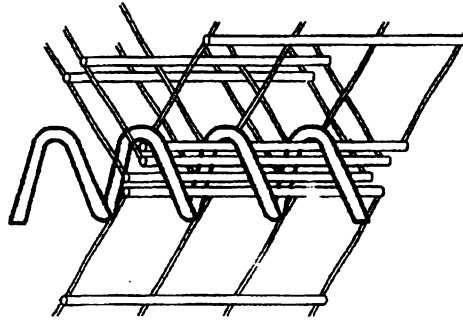
GABION MATTRESS

1 FT (305 mm) OR OVER BASKET HEIGHT

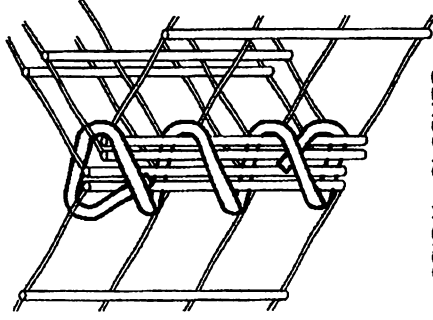
GABION BASKET



SPIRAL INSTALLATION



SPIRAL CLOSURE



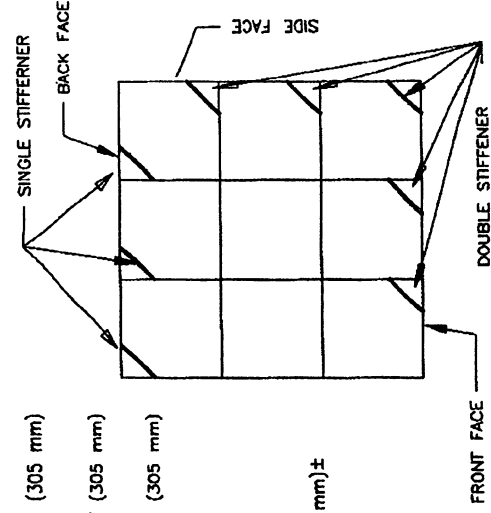
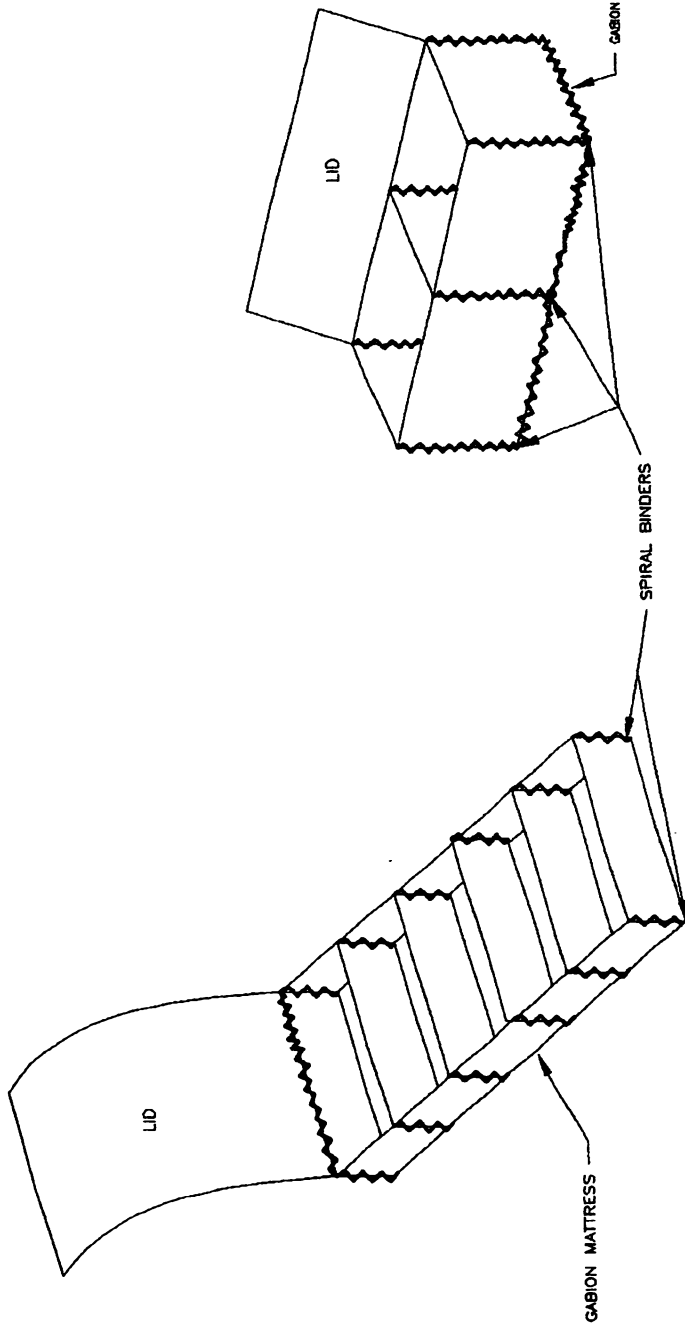
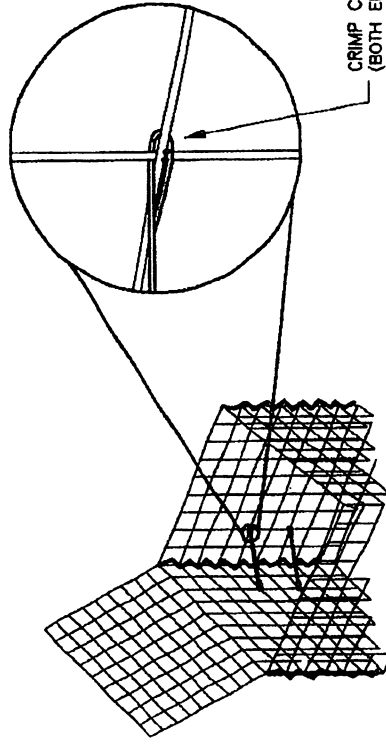
GENERAL NOTES:

1. ON ANY GIVEN LEVEL BASKETS WITH EXPOSED FACES MUST BE FILLED PRIOR TO FILLING BASKETS WITH NO EXPOSED FACE.
2. BASE OF GABION TO BE CONSTRUCTED BELOW SCOUR DEPTH NEXT TO STREAMS.
3. EXTERIOR GABIONS SHALL CONSIST OF WIRE-MESH BASKETS FILLED BY HAND PLACEMENT OF COARSE AGGREGATE, AT LEAST ALONG THE EXPOSED FACES, FOR A UNIFORM APPEARANCE.
4. INTERIOR GABIONS SHALL CONSIST OF WIRE-MESH BASKETS FILLED BY HAND PLACEMENT OR SMALL POWER EQUIPMENT PLACEMENT OF COARSE AGGREGATE.
5. FOR 3 FT (914 mm) GABION INSTALL PREFORMED STIFFENERS ACROSS THE CORNERS OF THE GABION BEFORE FILLING. TWO ROWS OF STIFFENERS (2 PER CELL) ARE REQUIRED FOR THE FRONT FACE AND THE SIDE FACES. INSTALL A SINGLE ROW (1 PER CELL) ON THE BACK FACE. NO STIFFENERS ARE REQUIRED IN THE INTERIOR CELLS.

NOTE:

1. USE SPIRAL BINDERS WITH WELDED WIRE MESH ONLY.
2. ENSURE A MINIMUM OF ONE LOOP OF SPIRAL PASSES THROUGH EACH OPENING OF WIRE MESH.

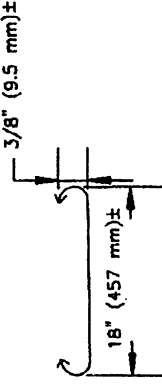
HOOK STIFFENERS AT CROSSING WIRE



LOCATION OF STIFFENERS. TOP VIEW

LOCATION OF STIFFENERS

6. FOR 1.5 FT (457 mm) GABION INSTALL A SINGLE ROW (ONE PER CELL) OF STIFFENERS IN THE SAME LOCATIONS AS BEFORE. FOR 1 FT (305 mm) GABION AND MATTRESSES NO STIFFENERS ARE REQUIRED.
7. STIFFENERS SHALL BE PLACED ACROSS THE CORNERS, AT 12 IN (305 mm) FROM THE CORNER, PROVIDING A DIAGONAL BRACING.



PREFORMED STIFFENERS

EFFECTIVE DATE: JULY 2000

COMMONWEALTH OF PUERTO RICO
DEPARTMENT OF TRANSPORTATION
AND PUBLIC WORKS
HIGHWAY AND TRANSPORTATION AUTHORITY

RECOMMENDED BY: *J. P. V. A.*
DESIGN AREA DIRECTOR
DATE: *July 2000*
APPROVED BY: *[Signature]*
EXECUTIVE DIRECTOR
DATE: *July 2000*

GABIONS
WELDED WIRE GABIONS
BINDERS AND LACING
PATTERNS

DATE	REVISION	BY

STD. **GABI**
DWG. **2 OF 20**