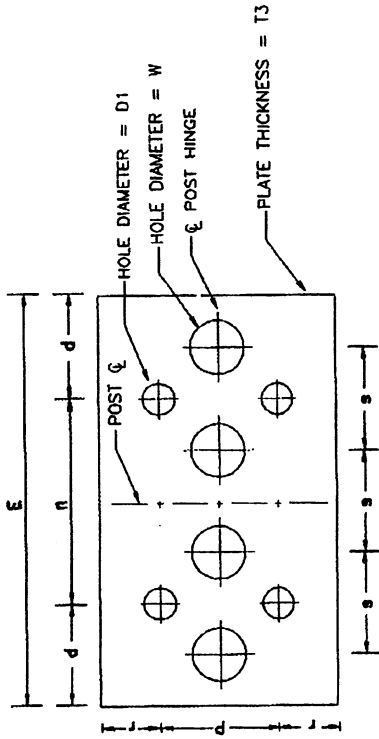
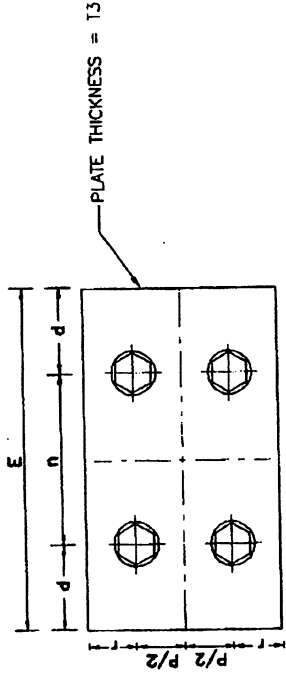


DIRECTION OF TRAFFIC
SIDE VIEW
HINGE JOINT DETAIL



FUSE PLATE



HINGE PLATE

TABLE 2

FUSE AND HINGE PLATES DATA												
POST SECTION	BOLT SIZE (in.)	E (in.)	P (in.)	D1 (in.)	d (in.)	n (in.)	r (in.)	s (in.)	T3 (in.)	W (in.)		
W6 x 12	5/8 Ø	4 5/16	2 15/16	1 1/16	1 1/8	2 1/16	1 1/16	1	1/4	1 13/16		
W8 x 15	3/4 Ø	5 1/2	3 3/4	1 3/16	1 1/2	2 1/2	1 3/8	1 5/16	3/8	1 1/16		
W10 x 17	1 1/8	8 1/4	5 11/16	1 3/16	2 3/16	3 7/8	2 3/16	1 15/16	1/2	1 11/16		
W8 x 18	1 1/2	10 3/4	7 1/3	1 9/16	2 13/16	5 1/8	2 5/8	2 1/2	1/2	2		

EFFECTIVE DATE: JULY 2000

COMMONWEALTH OF PUERTO RICO
DEPARTMENT OF TRANSPORTATION
AND PUBLIC WORKS
HIGHWAY AND TRANSPORTATION AUTHORITY

RECOMMENDED BY:

DEPUTY EXEC. DIR. FOR
TRAFFIC AND TOLL ROADS
DATE: 17-V-00

APPROVED BY:

EXECUTIVE DIRECTOR
DATE: 15-V-00

**GROUND MOUNTED
BREAK-AWAY SIGNS**

FUSE AND HINGE PLATES

DATE	REVISION	BY
08-05-99	TABLE 2	L.V.
03-2000	REVISED HINGE JOINT DETAIL	L.V.

STD. GMTS
DWG. 6 OF 15