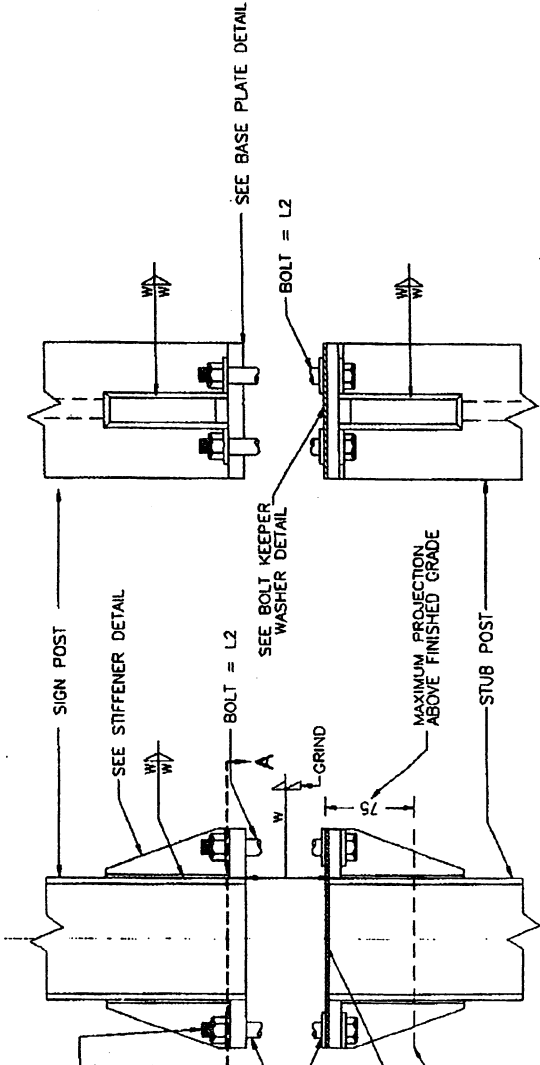


HIGH STRENGTH BOLTS, WASHERS AND NUTS WITH HEX HEAD, HEX NUT AND 3 WASHERS FOR EACH BOLT. SEE TABLE 3 FOR BOLT DIAMETER AND TORQUE. SEE BOLTING PROCEDURE.

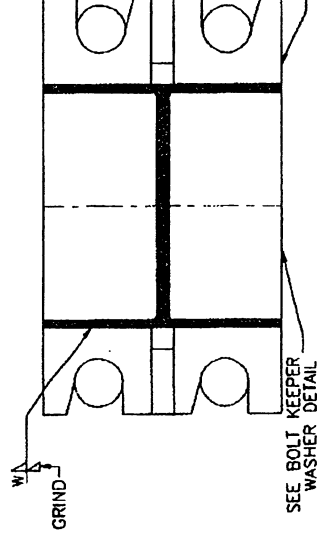
REMOVE ALL GALVANIZING FLUX OR BEADS IN WASHER AREA

SEE BOLT KEEPER WASHER DETAIL

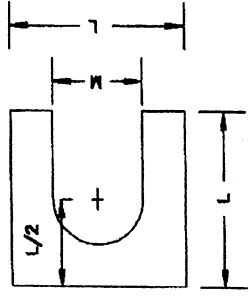
TOP OF FOUNDATION AND FINISHED GRADE



SIGN POST AND STUB POST ELEVATION

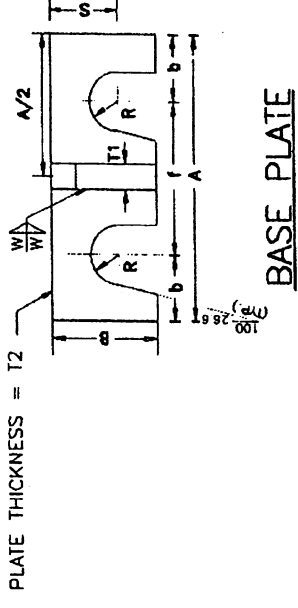


SECTION AA

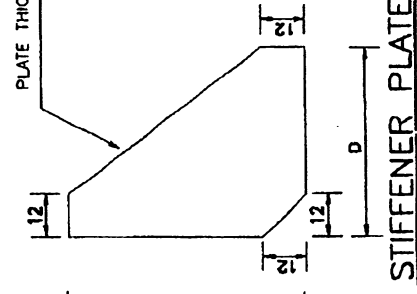


**SHIM**

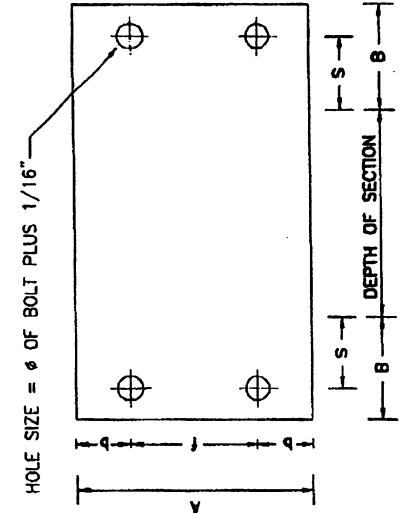
PROVIDE 2 @ 0.3 THICK AND 2 @ 0.8 THICK SHIMS PER POST



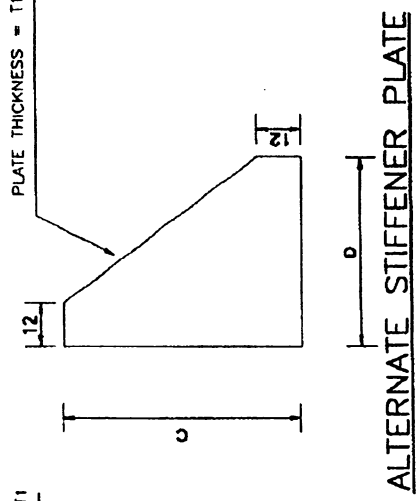
**BASE PLATE**



**STIFFENER PLATE**



**BOLT KEEPER WASHER**



**ALTERNATE STIFFENER PLATE**

TABLE 3

POST SECTION	BASE CONNECTION DATA													SHIM			
	A (IN.)	B (IN.)	C (IN.)	D (IN.)	BOLT SIZE (L2) AND TORQUE (LB-FT)	R (IN.)	b (IN.)	f (IN.)	S (IN.)	T1 (IN.)	T2 (IN.)	W (IN.)	L (IN.)	M (IN.)			
W6x12	4	3/4	1	15/16	5	1/8	2	1/2	1	3/16	1/2	5/8	1/4	1	1/2	11/16	
W8x15	5	11/16	2	3/16	6	1/2	1	1/2	1	3/8	1/2	5/8	1/4	1	3/4	3/4	
W10x17	5	11/16	2	3/16	6	1/2	1	1/2	1	3/8	1/2	5/8	1/4	1	3/4	3/4	
W8x18	7	7/8	2	15/16	7	7/8	2	11/16	4	1	9/16	3/4	5/16	2	3/8	1	1/8
W10x22	7	7/8	2	15/16	7	7/8	2	11/16	4	1	9/16	3/4	5/16	2	3/8	1	1/8
W12x30	11	7/8	2	15/16	7	7/8	2	13/16	6	1/4	1/2	3/4	5/16	2	3/8	1	1/8
W12x53	11	7/8	2	15/16	7	7/8	2	13/16	6	1/4	1/2	3/4	5/16	2	3/8	1	1/8

**PROCEDURE FOR ASSEMBLY OF BASE CONNECTION**

- ASSEMBLE POST TO STUB WITH BOLTS AND WITH ONE FLAT WASHER ON EACH END BOLT AND BETWEEN PLATES.
- SHIM AS REQUIRED TO PLUMB POST (SEE SHIM DETAIL).
- TIGHTEN ALL BOLTS THE MAXIMUM POSSIBLE WITH 300 TO 380 WRENCH TO BED WASHERS AND SHIMS AND TO CLEAN BOLT THREADS, THEN LOOSEN EACH BOLT IN TURN AND RETIGHTEN IN A SYSTEMATIC ORDER TO THE DESCRIBED TORQUE (SEE TABLE 3).

**NOTES:**

- SECTIONS SHOWN ARE FOR INSTALLATION ON RIGHT SHOULDERS AND IN GORE. BASE PLATE SLOT BEVELS ARE OPPOSITE HAND FROM THAT SHOWN FOR INSTALLATIONS IN THE MEDIAN.

EFFECTIVE DATE: OCTOBER 2000

COMMONWEALTH OF PUERTO RICO  
DEPARTMENT OF TRANSPORTATION  
AND PUBLIC WORKS  
HIGHWAY AND TRANSPORTATION AUTHORITY

RECOMMENDED BY:

**GROUND MOUNTED  
BREAK-AWAY SIGNS**

BASE CONNECTION

DATE	REVISION	BY	STD.	GMTS
07-1999	ADD ALTERNATE STIFFENER PLATE AND TABLE 3	IV.	DWG.	7 OF 15
09-2000	REVISED Y DIMENSION	IV.		