

GENERAL NOTES:

DESIGN REFERENCES:

1. AASHTO - STANDARD SPECIFICATIONS FOR STRUCTURAL SUPPORT FOR HIGHWAY SIGN LUMINAIRES AND TRAFFIC SIGNALS - SECOND DRAFT, MAY 1998 OR LATER DRAFTS OF SAID SPECIFICATION.
2. AASHTO - STANDARD SPECIFICATIONS FOR HIGHWAY BRIDGES, (LATEST EDITION)

DESIGN LOADS:

1. WIND - 125 M.P.H.
2. ALLOWABLE BEARING PRESSURE 2000 P.S.F.
3. INTERNAL FRICTION ANGLE $\phi = 22$

MATERIALS:

1. CONCRETE: CLASS A - $f'c = 3,000$ psi
2. STEEL: REINFORCING STEEL AASHTO M31 (ASTM A615) GRADE 60.

CONCRETE COVER:

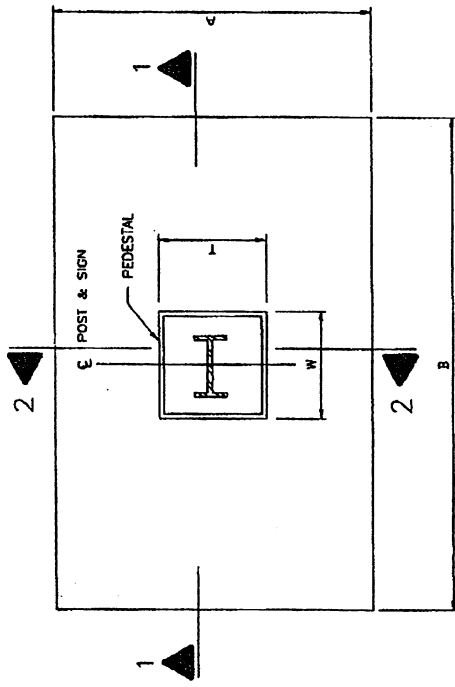
1. FOOTING
BOTT. 0.075
TOP & SIDES 0.075
2. PEDESTAL
TOP & SIDES 0.075

MISCELLANEOUS:

1. ALL EXPOSED CONCRETE CORNERS SHALL BE CHAMFERED 0.025 WHETHER OR NOT SUCH CHAMFERS ARE SHOWN ON THE PLAN DETAILS.
2. PRIOR TO ERECTION OF THE POST, THE BACKFILL MATERIAL SHALL BE IN PLACE.

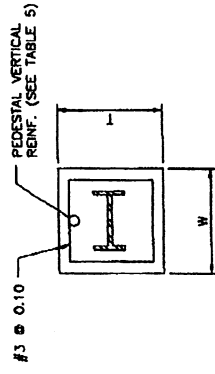
NOTES:

1. THE CONTRACTOR IS RESPONSIBLE FOR LOCATING UNDERGROUND OBSTRUCTIONS TO THE CONSTRUCTION OF THE GROUND MOUNTED FOOTING BY MEANS OF TEST PITS, REMOVE, SENSING OR ANY OTHER METHOD SELECTED BY THE CONTRACTOR. IF OBSTRUCTIONS ARE DETECTED, THE CONTRACTOR SHALL AVOID THEM BY USING THE DRILLED SHAFT FOOTING OR RELOCATING THE SIGN STRUCTURE WITH THE CONSENT OF THE ENGINEER. THE EXPLORATION FOR UNDERGROUND OBSTRUCTIONS AND RELOCATION STRUCTURES ARE A SUBSIDIARY OBLIGATION OF THE CONTRACTOR.
2. ON CAST IN PLACE DRILLED SHAFTS, THE CONCRETE SHALL BE POURED AGAINST UNDISTURBED SOIL.
3. THE CONTRACTOR MAY ELECT TO CONSTRUCT A SPREAD FOOTING OR DRILLED SHAFT FOOTING PROVIDED THEY DO NOT CONFLICT WITH UNDERGROUND OBSTRUCTIONS, MAINTENANCE OF TRAFFIC CONSTRAINTS, ROCK LAYER OR ANY OTHER SITE CONSTRAINTS. IF SITE CONSTRAINTS PREVENT THE USE OF A TYPE OF FOOTING, THE CONTRACTOR SHALL DESIGN AND CONSTRUCT A MODIFIED FOOTING SUITABLE TO THE SITE AS A SUBSIDIARY OBLIGATION AND SUBJECT TO THE APPROVAL OF THE AUTHORITY.

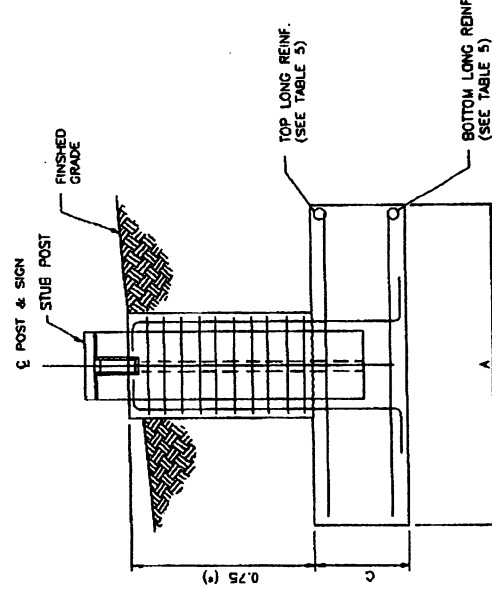


PLAN

NOTES:
FOOTING TO BE PLACED WITH LONGEST SIDE PARALLEL TO ROADWAY.



TYPICAL PEDESTAL SECTION

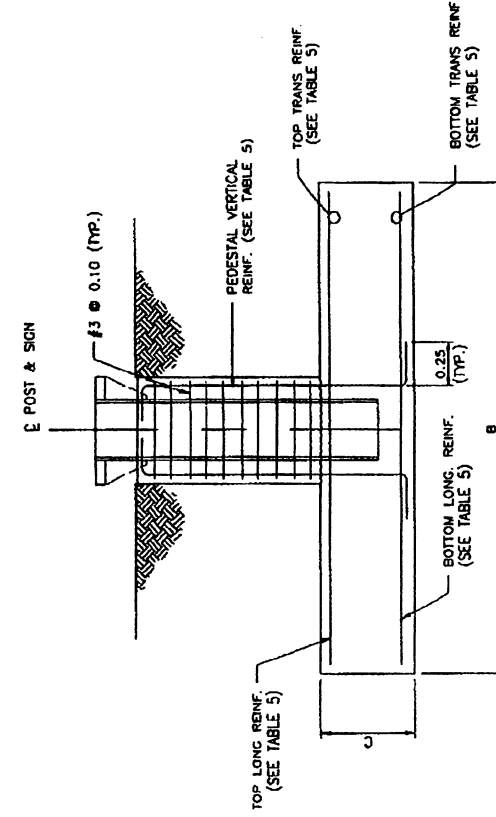


SECTION 2-2

(*) SPECIAL DESIGN FOR GREATER DEPTH

TABLE 5

POST TYPE	PEDESTAL SIZE		PEDESTAL VERTICAL REINF.	FOOTING DIMENSION			TOP REINF.			BOTTOM REINF.				
	"T"	"W"		A	B	C	LONG		TRANS.		LONG		TRANS.	
							No.	Bar	No.	Bar	No.	Bar	No.	Bar
W6x12	0.60	0.60	#5	0.90	2.00	0.40	4	#4	7	#4	6	#4	7	#4
W8x18	0.60	0.60	#5	1.20	2.40	0.40	5	#4	9	#4	7	#4	8	#4
W10x22	0.60	0.60	#5	1.20	3.00	0.40	5	#4	11	#4	5	#5	11	#4



SECTION 1-1

EFFECTIVE DATE: JULY 2000

COMMONWEALTH OF PUERTO RICO
DEPARTMENT OF TRANSPORTATION
AND PUBLIC WORKS
HIGHWAY AND TRANSPORTATION AUTHORITY

RECOMMENDED BY:
DEPUTY EXEC. DIR. FOR
TRAFFIC AND TOLL ROADS
DATE: 10-11-00

APPROVED BY:
EXECUTIVE DIRECTOR
DATE: 11-15-00

**GROUND MOUNTED
BREAK-AWAY SIGNS**
FOUNDATIONS
SPREAD FOOTING

DATE: 09-2000
REVISION: I.V.
BY: [Signature]
GENERAL REVISION

STD. GMTS
DWG. 9 OF 15