

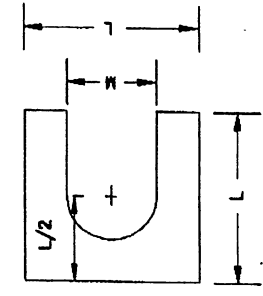
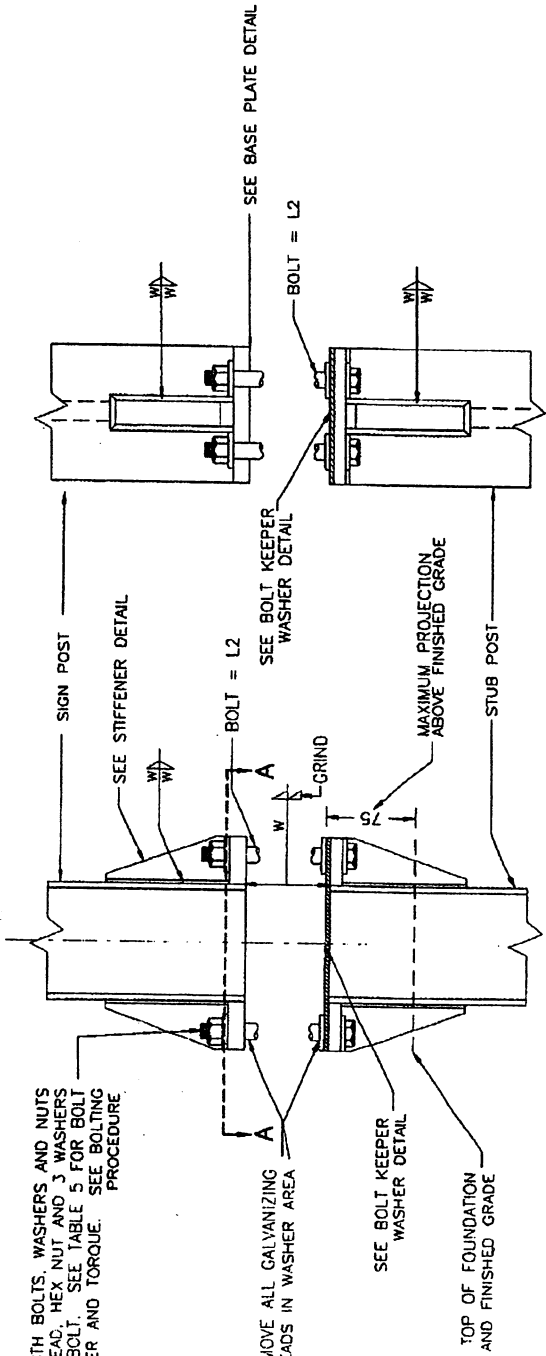
HIGH STRENGTH BOLTS, WASHERS AND NUTS WITH HEX HEAD, HEX NUT AND 3 WASHERS FOR EACH BOLT. SEE TABLE 5 FOR BOLT DIAMETER AND TORQUE. SEE BOLTING PROCEDURE.

REMOVE ALL GALVANIZING RUNS OR BEADS IN WASHER AREA

SEE BOLT KEEPER WASHER DETAIL

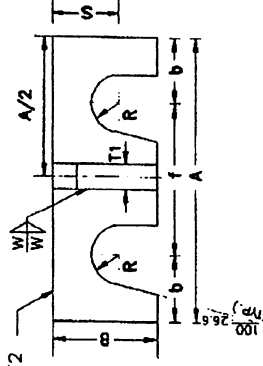
TOP OF FOUNDATION AND FINISHED GRADE

SIGN POST AND STUB POST ELEVATION



SHIM PROVIDE 2 @ 0.3 THICK AND 2 @ 0.8 THICK SHIMS PER POST

PLATE THICKNESS = T2

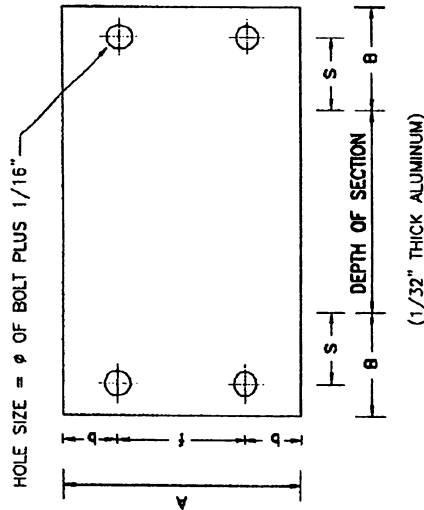


BASE PLATE

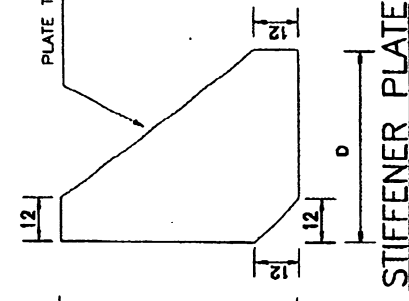
HOLE SIZE = ϕ OF BOLT PLUS 1/16"

PLATE THICKNESS = T1

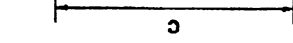
PLATE THICKNESS = T1



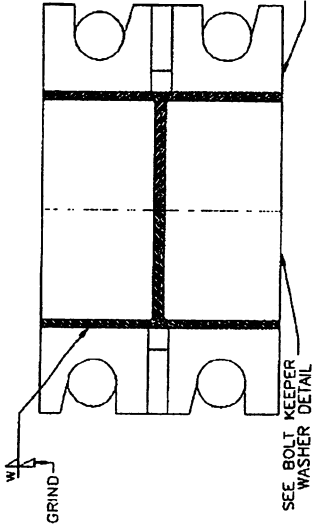
BOLT KEEPER WASHER



STIFFENER PLATE



ALTERNATE STIFFENER PLATE



SECTION AA

TABLE 7

POST SECTION	BASE CONNECTION DATA													SHIM		
	A (in.)	B (in.)	C (in.)	D (in.)	BOLT SIZE (L2) AND TORQUE (LB-FT)	R (in.)	b (in.)	f (in.)	S (in.)	T1 (in.)	T2 (in.)	w (in.)	L (in.)	M (in.)		
W6x12	4 3/4	1 15/16	5 1/8	1 15/16	5/8 ϕ 29	3/8	1 1/8	2 1/2	1 3/16	1/2	5/8	1/4	1 1/2	11/16		
S4x7.7	3 1/6	1 15/16	5 1/8	1 15/16	5/8 ϕ 29	3/8	3/4	1 2/3	1 3/16	1/2	1/2	1/4	1 1/2	11/16		
S5x10	3 9/16	1 15/16	5 1/8	1 15/16	5/8 ϕ 29	3/8	27/32	1 7/8	1 3/16	1/2	1/2	1/4	1 1/2	11/16		

PROCEDURE FOR ASSEMBLY OF BASE CONNECTION

- ASSEMBLE POST TO STUB WITH BOLTS AND WITH ONE FLAT WASHER ON EACH END BOLT AND BETWEEN PLATES.
- SHIM AS REQUIRED TO PLUMB POST (SEE SHIM DETAIL).
- TIGHTEN ALL BOLTS THE MAXIMUM POSSIBLE WITH 300 TO 380 WRENCH TO BED WASHERS AND SHIMS AND TO CLEAN BOLT THREADS. THEN LOOSEN EACH BOLT IN TURN AND RETIGHTEN IN A SYSTEMATIC ORDER TO THE DESCRIBED TORQUE (SEE TABLE 5).

NOTES:

- SECTIONS SHOWN ARE FOR INSTALLATION ON RIGHT SHOULDERS AND IN CORE. BASE PLATE SLOT BEVELS ARE OPPOSITE HAND FROM THAT SHOWN FOR INSTALLATIONS IN THE MEDIAN.

EFFECTIVE DATE: OCTOBER 2000

COMMONWEALTH OF PUERTO RICO
DEPARTMENT OF TRANSPORTATION
AND PUBLIC WORKS
HIGHWAY AND TRANSPORTATION AUTHORITY

RECOMMENDED BY:

GROUND MOUNTED
BREAK-AWAY SIGNS
EXIT NUMBER PANEL
BASE CONNECTION

DATE	REVISION	BY
08-05-99	REVISE TABLE 5 AND ADD ALTERNATE STIFFENER PLATE	I.V.
09-3000	REVISED 3. DIMENSION	I.V.

STD. GMTS
DWG. 12C OF 15