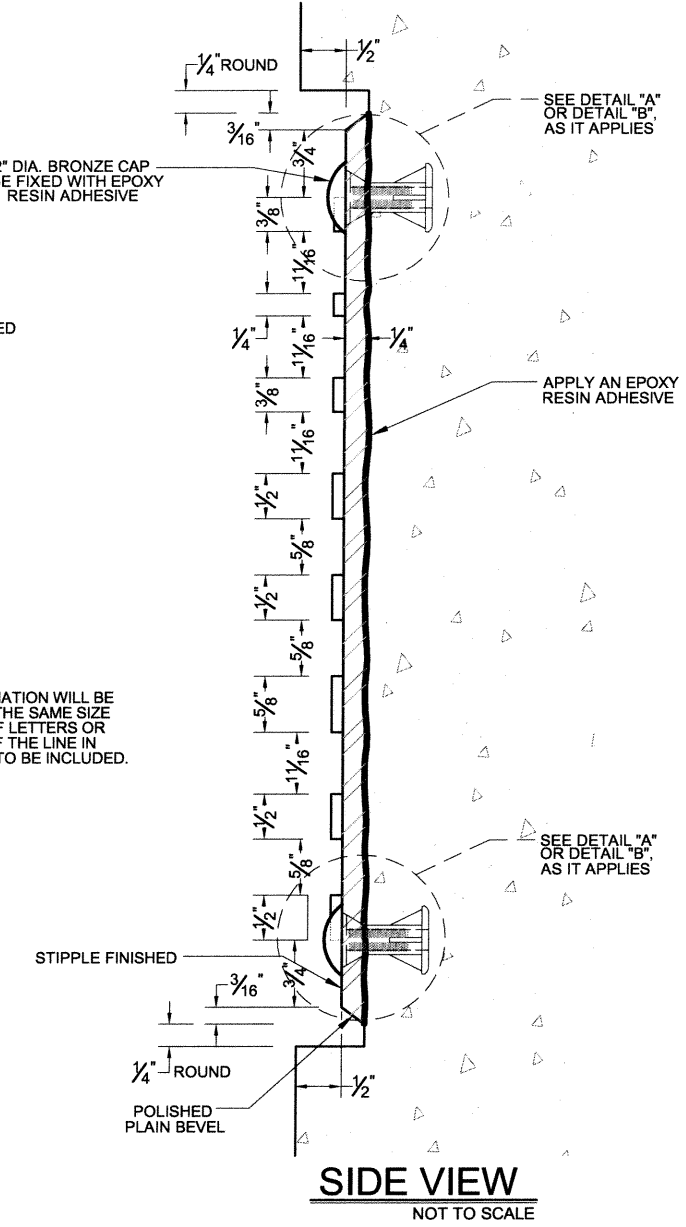
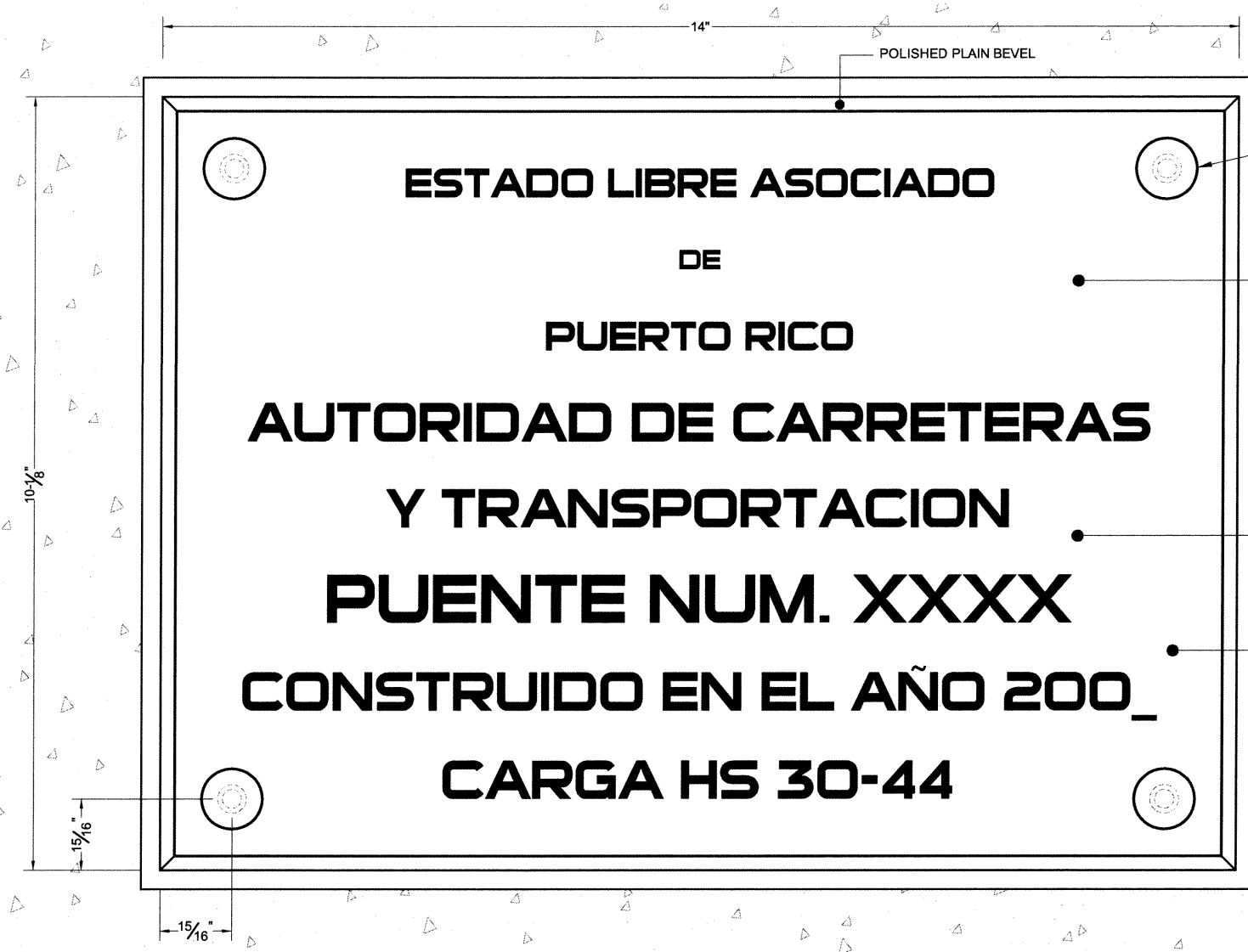
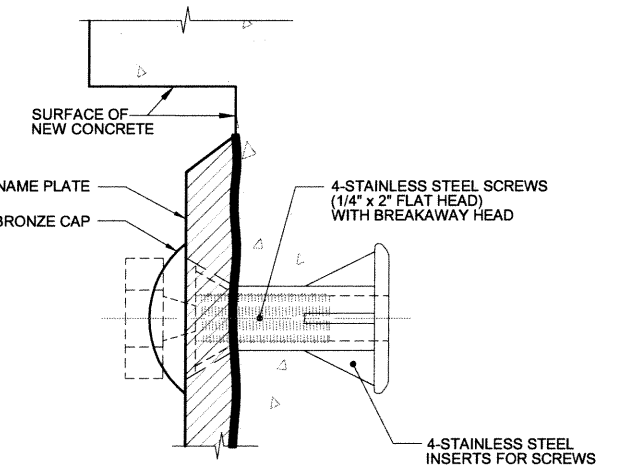


| DATE | REVISION | BY | DATE | REVISION | BY |
|------|----------|----|------|----------|----|
| | | | | | |
| | | | | | |
| | | | | | |
| | | | | | |

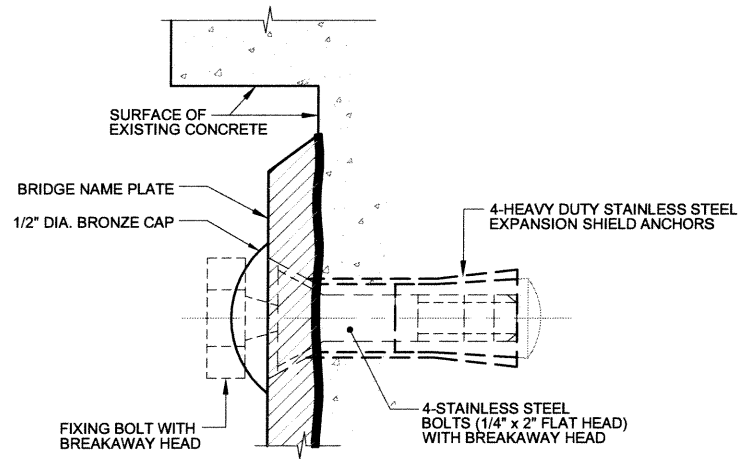


FRONT VIEW
NOT TO SCALE

SIDE VIEW
NOT TO SCALE



DETAIL "A"
TYPICAL FIXING DETAIL TO NEW CONCRETE PARAPET OR END SECTION
NOT TO SCALE



DETAIL "B"
TYPICAL FIXING DETAIL TO EXISTING CONCRETE PARAPET OR END SECTION
NOT TO SCALE

NOTES:

1. TABLET IS SHALL CAST OF VIRGIN INGOTS OF GRAY CAST IRON CLASS 40 AS PER ASTM A48 AND IT SHALL BE FREE OF ALL PITS AND GAS HOLES.
2. BORDER AND FACES OF RAISED LETTERS SHALL BE SHARP AND ARE TO BE SATIN FINISHED AN BACKGROUND IS TO BE STIPPLE FINISHED AND OXIDIZED TO A RICH COLOR. TWO PROTECTIVE COATINGS OF THE BEST CLEAR LACQUER SHALL BE SPRAYED ON COMPLETED PLAQUE.
3. TABLET IS SHALL 14" WIDE AND 10-3/4" HIGH WITH PLAIN BEVEL BORDER DESIGN. MOUNTING ATTACHMENTS FOR MOUNTING TABLET ON CONCRETE WALL SHALL BE FURNISHED AS SPECIFIED.
4. A BRIDGE NAME PLATE WILL BE REQUIRED UNLESS THE CONSTRUCTION DRAWINGS OR CONTRACT DOCUMENT SPECIFICALLY INDICATE THAT A BRIDGE NAME PLATE IS NOT REQUIRED.
5. THE BRIDGE NUMBER SHALL BE REQUIRED BY FIELD ENGINEER OF CONSTRUCTION AREA TO THE BRIDGE ENGINEERING OFFICE.
6. AN EPOXY RESIN ADHESIVE SHALL BE APPLIED TO THE REAR OF BRIDGE NAME PLATE BEFORE FIXING. THE EPOXY RESIN ADHESIVE SHALL MEET THE REQUIREMENTS OF AASHTO M235 AND ASTM C881.
7. BRIDGE NAME PLATES SHALL MEET THE REQUIREMENTS OF THE STANDARD SPECIFICATION 660-"NAME PLATES".
8. THE EPOXY RESIN ADHESIVE, BREAKAWAY SCREWS, INSERTS FOR SCREWS, BREAKAWAY BOLTS, EXPANSION SHIELD ANCHORS, AND BRONZE CAPS SHALL BE CONSIDERED A SUBSIDIARY OBLIGATION BY THE CONTRACTOR AND ITS COST INCLUDED IN THE "NAME PLATE" PAY ITEM.



COMMONWEALTH OF PUERTO RICO
DEPARTMENT OF TRANSPORTATION AND PUBLIC WORKS
HIGHWAY AND TRANSPORTATION AUTHORITY

STANDARD DRAWING APPROVED BY:
DATE: *2/11/15*
ASSISTANT EXECUTIVE DIRECTOR FOR INFRASTRUCTURE

MISCELLANEOUS BRIDGE DETAILS
BRIDGE NAME PLATE DETAILS

MBD-4
SEPTEMBER 2009