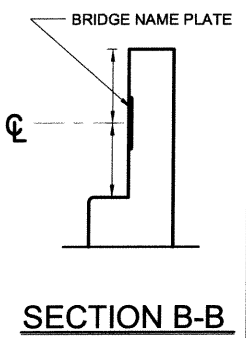
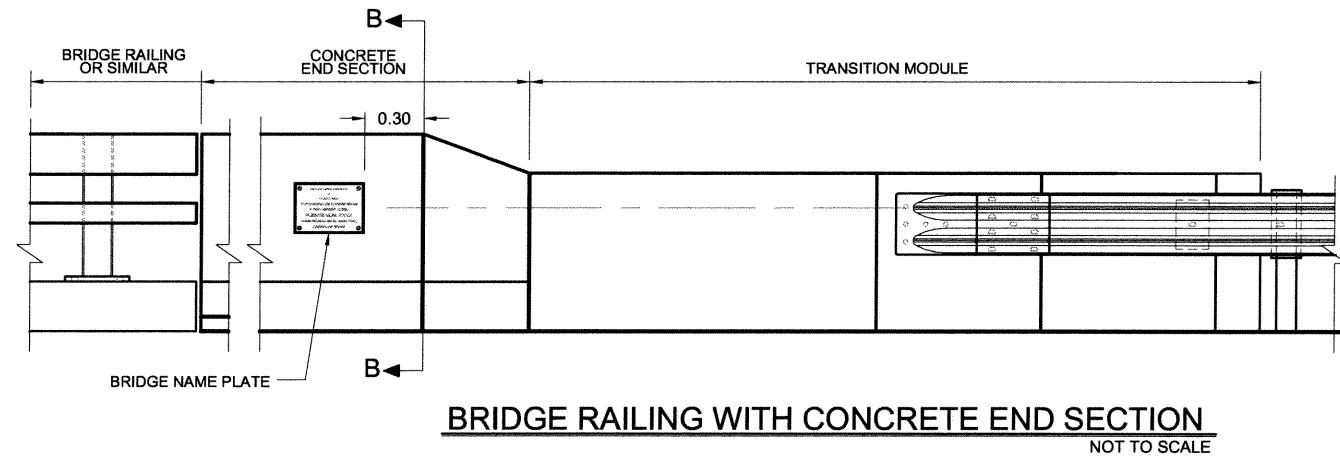
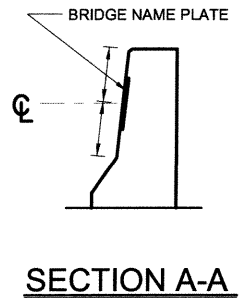
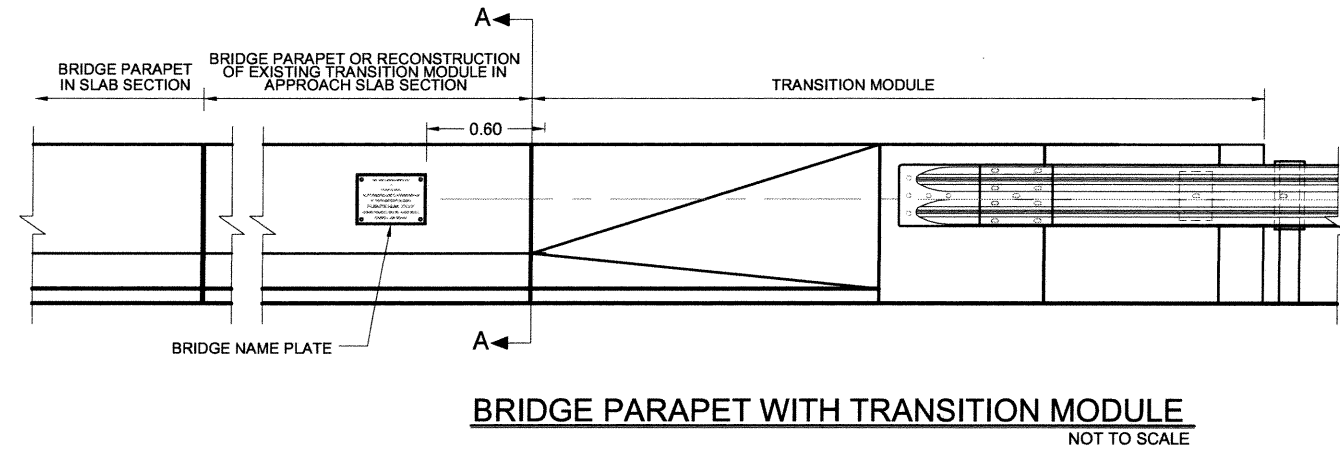
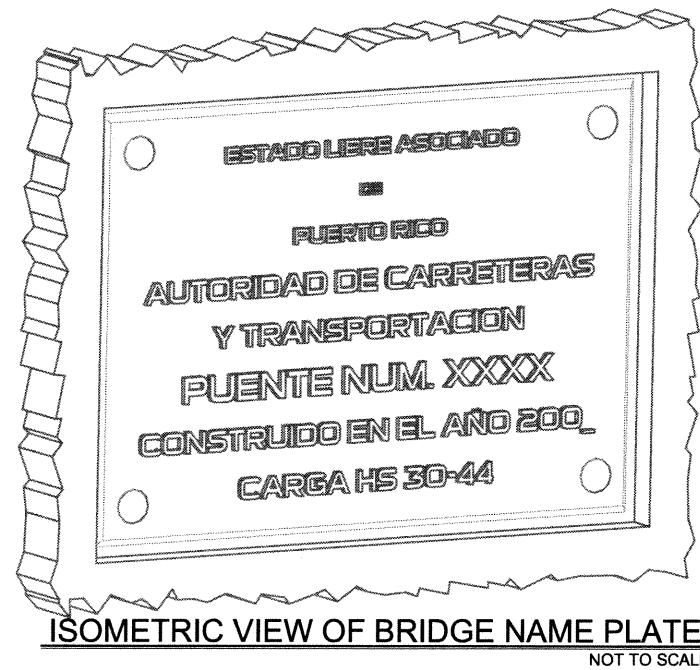
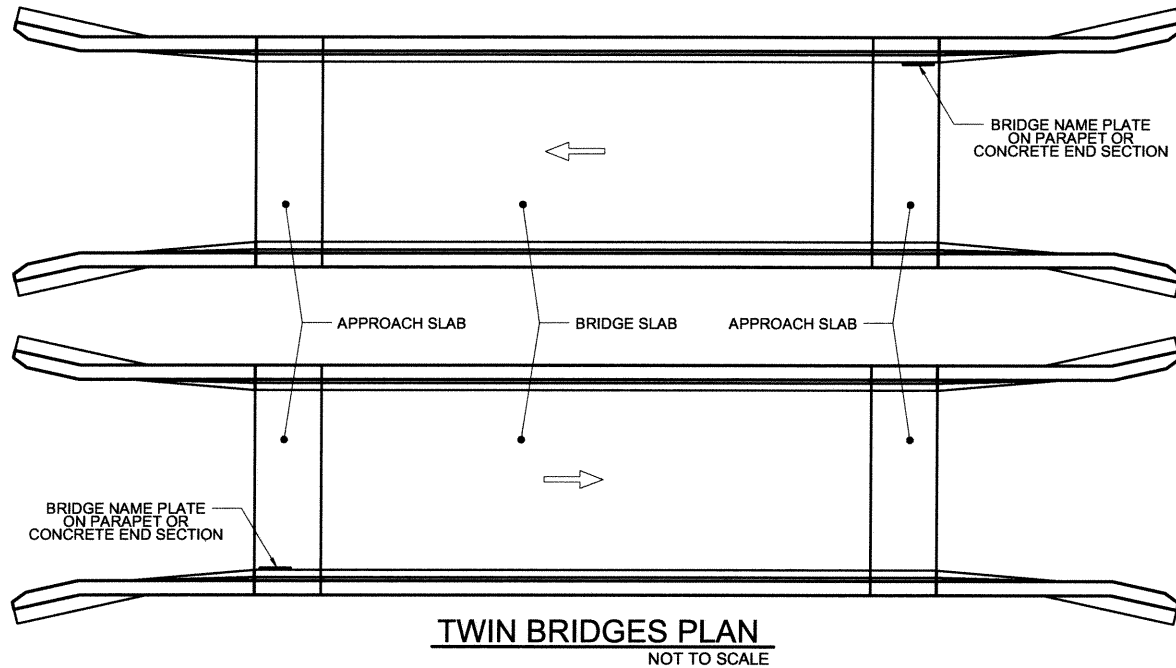
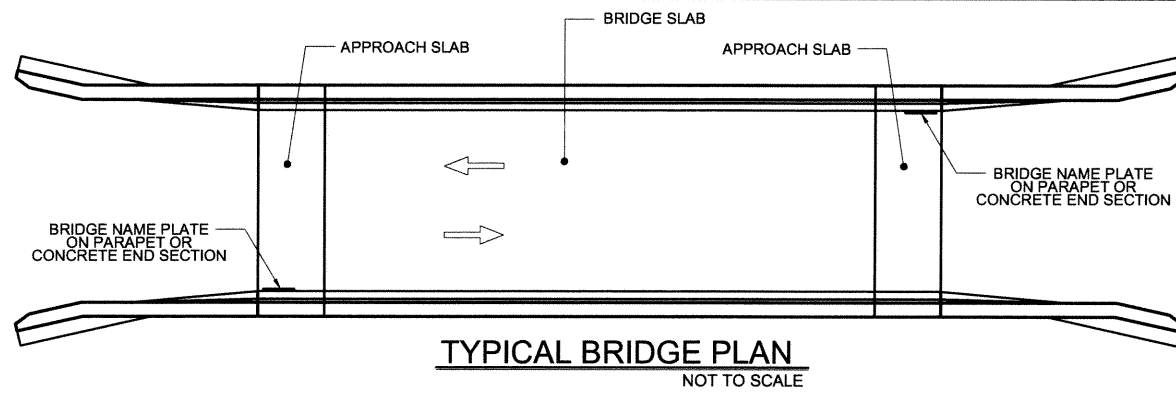


DWG BY: LMARTINEZ 2934

BY	REVISION	DATE
BY	REVISION	DATE
BY	REVISION	DATE
BY	REVISION	DATE
BY	REVISION	DATE
BY	REVISION	DATE
BY	REVISION	DATE
BY	REVISION	DATE
BY	REVISION	DATE
BY	REVISION	DATE



- NOTES:**
1. THE BRIDGE NAME PLATE WILL BE LOCATED IN THE MIDDLE OF VERTICAL DISTANCE OF PARAPET OR END SECTION AS PER DETAILS OF SECTIONS A-A AND B-B ON THIS SHEET.
 2. THE BRIDGE NAME PLATE SHALL FOLLOW THE DETAILS AND NOTES OF SHEET MBD-4.
 3. A BRIDGE NAME PLATE WILL BE REQUIRED UNLESS THE CONSTRUCTION DRAWINGS OR CONTRACT DOCUMENT SPECIFICALLY INDICATE THAT A BRIDGE NAME PLATE IS NOT REQUIRED.
 4. BRIDGE NAME PLATES SHALL MEET THE REQUIREMENTS OF THE STANDARD SPECIFICATION 660-"NAME PLATES".



COMMONWEALTH OF PUERTO RICO
DEPARTMENT OF TRANSPORTATION AND PUBLIC WORKS
HIGHWAY AND TRANSPORTATION AUTHORITY

DATE: 2/11/09

STANDARD DRAWING APPROVED BY: *[Signature]*
ASSISTANT EXECUTIVE DIRECTOR
FOR INFRASTRUCTURE

MISCELLANEOUS BRIDGE DETAILS
LOCATION OF BRIDGE NAME PLATE

MBD-5
SEPTEMBER 2009

ENGINEERING SERVICES AREA ENGINEERING STANDARDS OFFICE