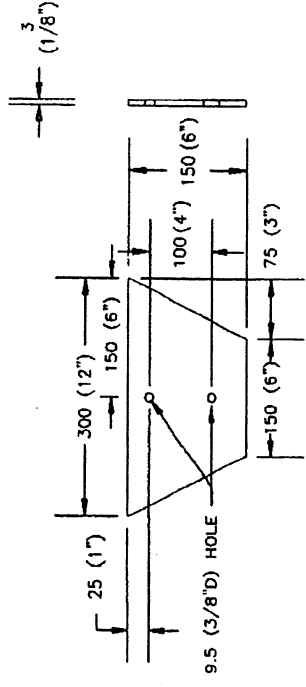
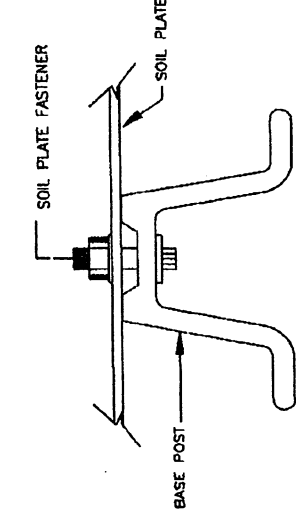


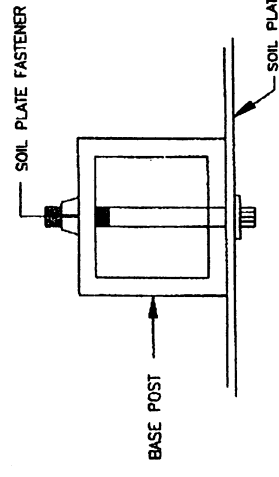
ALTERNATE SOIL PLATE



SOIL PLATE

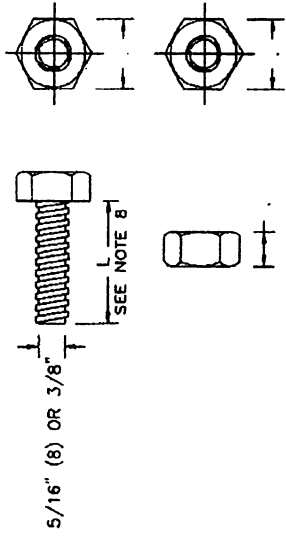


FLANGED CHANNEL POST



SQUARE STEEL POST

METHOD OF ATTACHING SOIL PLATE TO POST



A307 HEX BOLT AND NUT

SOIL PLATE FASTENER

GENERAL NOTES:

1. SOIL PLATE SHALL BE MANUFACTURED ACCORDING TO ASHTO M183.
2. AFTER ALL PUNCHING, DRILLING, STAMPING AND WELDING IS COMPLETE, THE SOIL PLATE SHALL BE ZINC-COATED BY THE HOT-DIP PROCESS ACCORDING TO ASHTO M111 (ASTM A 123), THICKNESS GRADE 65.
3. THE CONTRACTOR SHALL ADJUST THE LENGTH OF BOLT. THE BOLT SHALL PENETRATE THE ENTIRE THICKNESS OF THE NUT.
4. THE CONTRACTOR SHALL USE TWO (2) SOIL PLATE FASTENERS FOR ATTACHING SOIL PLATE TO BASE POST.

EFFECTIVE DATE: JULY 2000

COMMONWEALTH OF PUERTO RICO  
 DEPARTMENT OF TRANSPORTATION  
 AND PUBLIC WORKS  
 HIGHWAY AND TRANSPORTATION AUTHORITY

RECOMMENDED BY: [Signature]  
 DEPUTY EXEC. DIR. FOR TRAFFIC AND TOLL ROADS  
 DATE: 7-1-00

APPROVED BY: [Signature]  
 EXECUTIVE DIRECTOR  
 DATE: 7/1/00

SMALL TRAFFIC SIGNS  
 STEEL FLANGED CHANNEL OR SQUARE STEEL POST  
 SOIL PLATE DETAILS

DATE	REVISION	BY
08-2000	GENERAL REVISION	N.

STD. DWG. SITS 4A OF 25