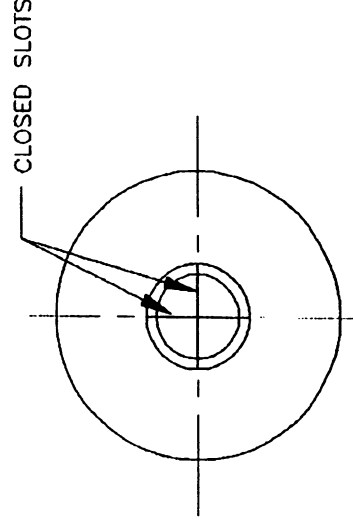
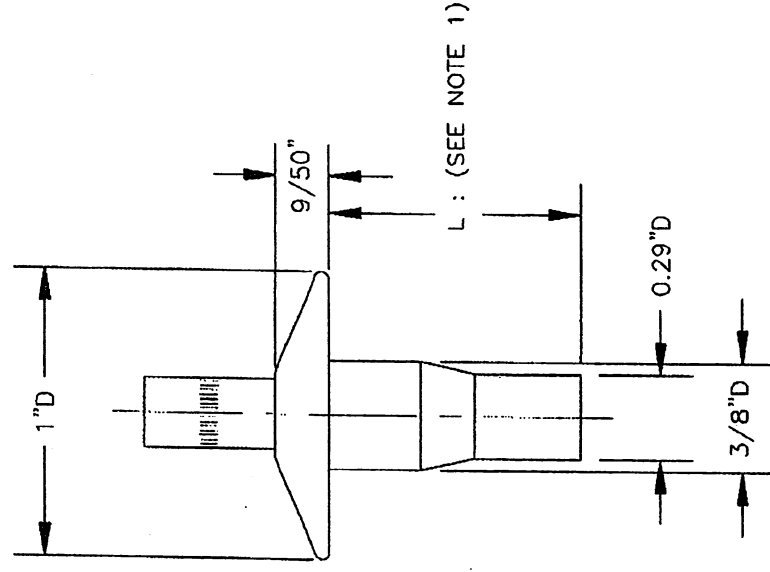


ALUMINUM SIGN RIVET - JUMBO HEAD

VCR 221
AS MANUFACTURED BY SIMI FASTENING



MODIFIED ALUMINUM DRIVE RIVET

(RIVET - 2117 ALUMINUM NATURAL, PIN - 7075 ALUMINUM NATURAL)
AS MANUFACTURED BY SOUTHCO

GENERAL NOTES

1. THE CONTRACTOR SHALL ADJUST THE LENGTH OF BOLT ACCORDING TO THE POST TYPE. THE BOLT SHALL PENETRATE THE ENTIRE THICKNESS OF THE NUT.
2. THE CONTRACTOR SHALL USE A NYLON, NEOPRENE OR FIBER WASHER BETWEEN REFLECTIVE SHEATHING SIGN FACE AND THE BOLT HEAD.
3. CONTRACTORS, SUBCONTRACTORS OR SUPPLIERS WHO WISH TO INCLUDE THEIR PRODUCTS INTO THE APPROVED LISTING OF FASTENERS FOR SIGN PLATES MUST SUBMIT THE FOLLOWING INFORMATION FOR CONSIDERATION BY THE AUTHORITY: FULL DESCRIPTION AND DRAWINGS OF THE FASTENERS AND COMPLETE MATERIAL DESCRIPTION, GALVANIZING AND OTHER PERTINENT INFORMATION.
4. FASTENER DETAILS ARE FOR ILLUSTRATIVE PURPOSE ONLY.

EFFECTIVE DATE : DECEMBER 2000

COMMONWEALTH OF PUERTO RICO
DEPARTMENT OF TRANSPORTATION
AND PUBLIC WORKS
HIGHWAY AND TRANSPORTATION AUTHORITY

RECOMMENDED BY:
[Signature]
DEPUTY EXEC. DIR. FOR
TRAFFIC AND SIGNALS
DATE: 12-11-2000
APPROVED BY:
[Signature]
EXECUTIVE DIRECTOR
DATE: 12-11-2000

**SMALL TRAFFIC SIGNS
FASTENERS
FOR ATTACHING SIGN
PLATES TO TOP POST**

DATE	REVISION	BY

STD. STS
DWG. 5A OF 25