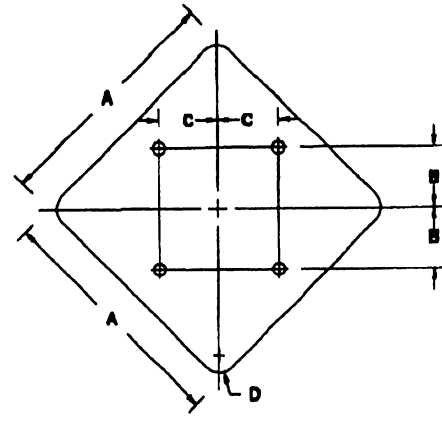


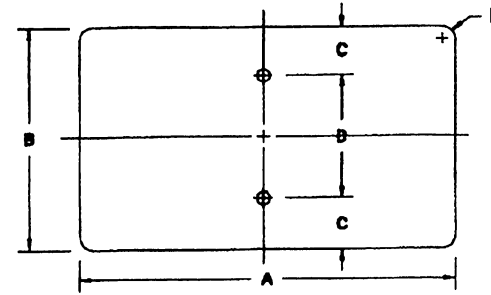
DIAMOND

A	B	C
600	300	35
750	375	45
800	450	55



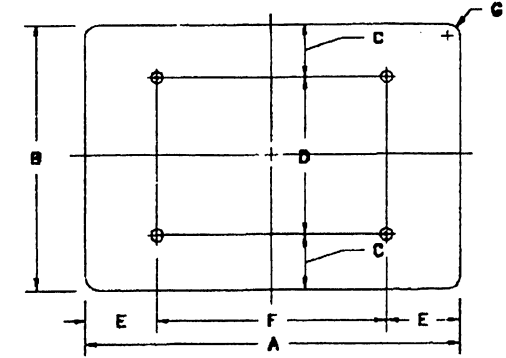
DIAMOND

A	B	C	D
1200	375	375	75
1500	450	450	95



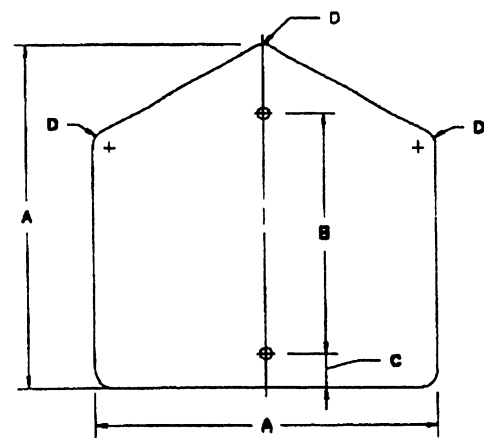
HORIZONTAL RECTANGLE

A	B	C	D	E
525	375	35	305	35
600	300	70	230	35
600	450	75	300	35
750	375	70	305	35
750	600	75	450	35
900	300	70	230	35



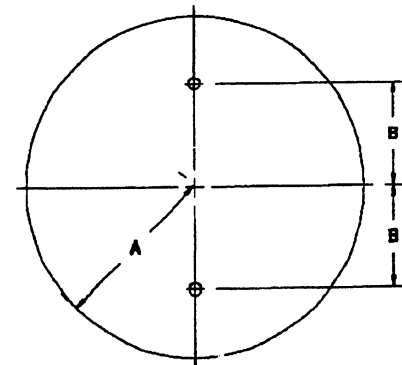
HORIZONTAL RECTANGLE

A	B	C	D	E	F	G
900	600	75	450	150	600	35
1200	600	75	450	225	750	45
1200	900	150	600	225	750	55
1500	600	75	450	300	900	35
1500	900	300	600	600	900	55



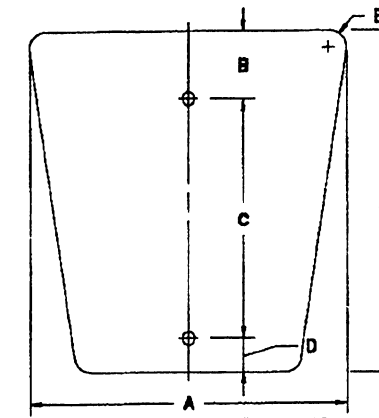
PENTAGON (SCHOOL)

A	B	C	D
750	525	75	45
900	600	75	55



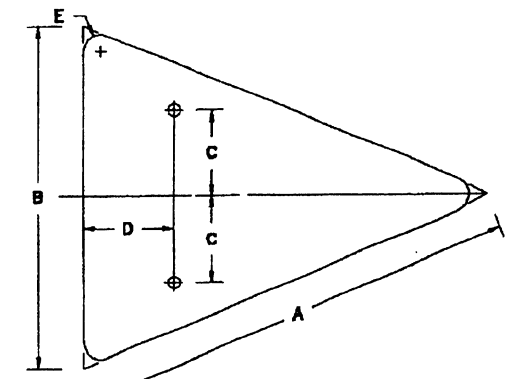
CIRCLE

A	B
375	300
450	375



TOURISTIC ROUTES AND NATIONAL FOREST SHIELD

A	B	C	D	E
450	50	375	25	50
600	60	500	40	60



ISOSCELES TRIANGLE

A	B	C	D	E
1000	750	185	300	45
1200	900	225	375	55

EFFECTIVE DATE: DECEMBER 1999

COMMONWEALTH OF PUERTO RICO  
DEPARTMENT OF TRANSPORTATION  
AND PUBLIC WORKS  
HIGHWAY AND TRANSPORTATION AUTHORITY

SMALL TRAFFIC SIGNS  
BLANK PLATE  
STANDARDS

RECOMMENDED BY:  
DEPUTY EXEC. DIR. FOR  
TRAFFIC AND TOLL ROADS  
DATE: 2-2-99  
APPROVED BY:  
EXECUTIVE DIRECTOR  
DATE: 2-2-99  
APPROVED BY:  
DIV. ADM. FLOOR DIVISION  
DATE: 11-2-99

DATE	REVISION	BY
2-1999	GENERAL REVISION	I.V.
5-1999	GENERAL REVISION	I.V.
10-1999	GENERAL REVISION	I.V.

STD. DWG. BA OF 25