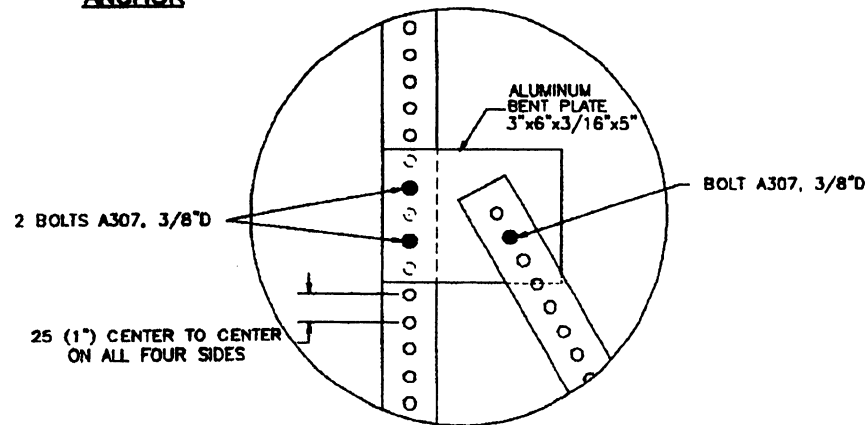


3/8" D KWIK BOLT II AS MANUFACTURED BY HILTI

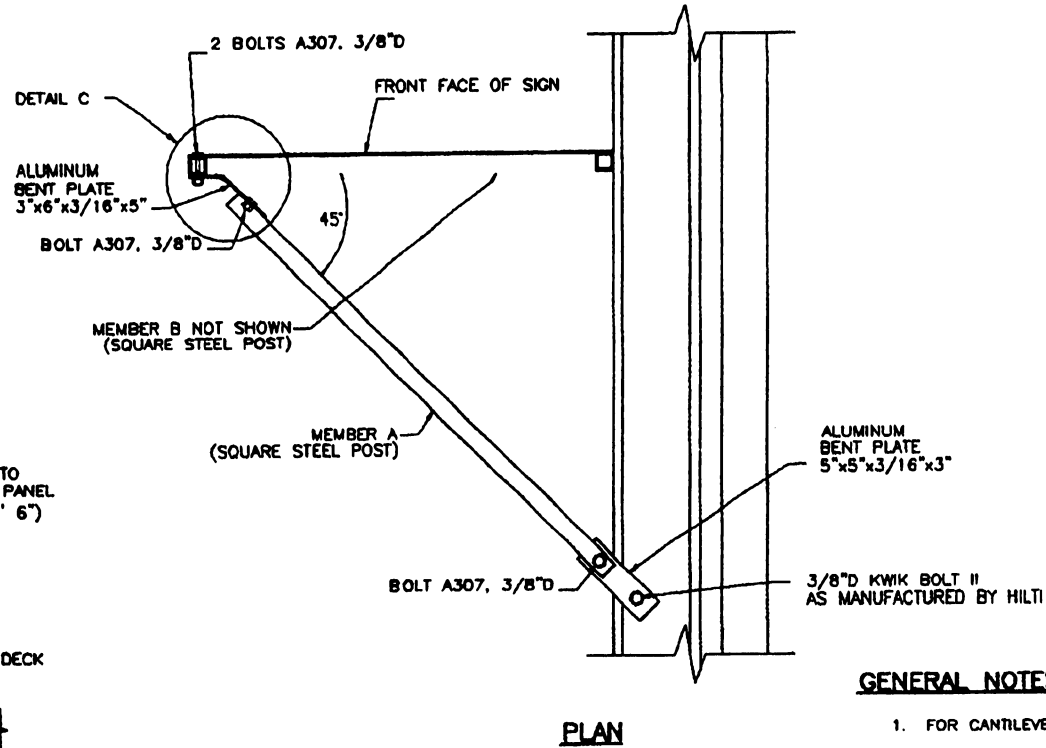
ANCHOR



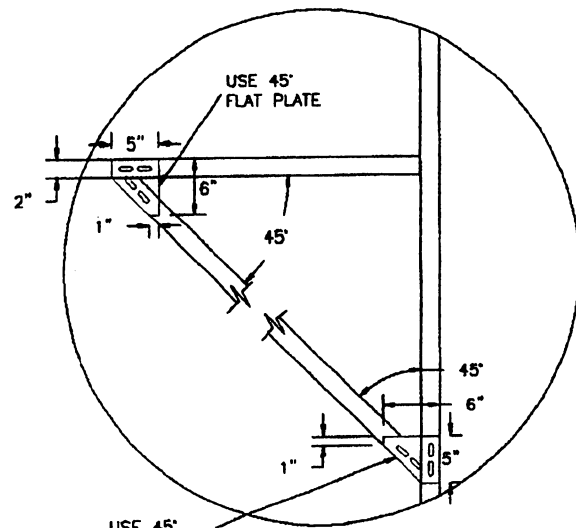
DETAIL C

CANTILEVER SUPPORT MOUNTING

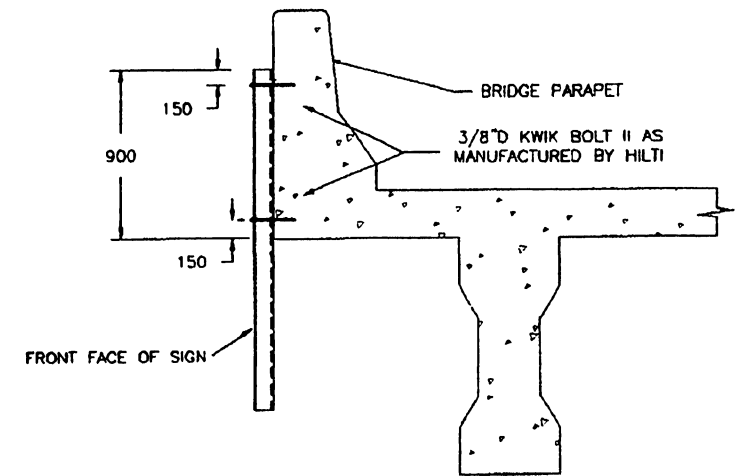
1. FOR SIGN PANELS WITH A SIGN PANEL AREA EQUAL OR LESS THAN 18 SQUARE FEET AND WIDTH EQUAL OR LESS THAN 1,200 (48").
2. FOR OCTAGONAL, DIAMOND, TOURISTIC AND CIRCULAR SIGN PANEL WITH A MAXIMUM HORIZONTAL WIDTH EQUAL OR LESS THAN 600 (24").



PLAN



FLAT PLATE CONNECTION DETAIL



OVERHEAD MOUNTING

USE ONE STEEL FLANGED CHANNEL POST OR ONE SQUARE STEEL POST FOR SIGNS W12-2 600 (2') x 600 (2'), 750 (2'-6") x 750 (2'-6"), AND 900 (3') x 900 (3').
USE TWO STEEL FLANGED CHANNEL POST OR TWO SQUARE STEEL POST FOR SIGNS W12-2 1200 (4') x 1200 (4') AND 1500 (5') x 1500 (5') OR GREATER, OR ANY OTHER SIGNS INDICATED IN THE CONSTRUCTION PLANS.

GENERAL NOTES:

1. FOR CANTILEVER SUPPORT MOUNTING ONLY SQUARE STEEL POST SHALL BE USED.
2. CONTRACTORS, SUBCONTRACTORS OR SUPPLIERS WHO WISH TO INCLUDE THEIR PRODUCTS INTO THE APPROVED LISTING OF ANCHORS MUST SUBMIT THE FOLLOWING INFORMATION FOR CONSIDERATION BY THE AUTHORITY: FULL DESCRIPTION AND DRAWINGS OF THE ANCHOR INCLUDING DIMENSION OF ALL COMPONENTS AND COMPLETE MATERIAL DESCRIPTION, GALVANIZING AND OTHER PERTINENT INFORMATION.
3. KWIK BOLT SHALL BE ZINC PLATED IN ACCORDANCE WITH ASTM B633, TYPE III FE/ZN 5.
4. THE CONTRACTOR SHALL FOLLOW HILTI INSTRUCTIONS FOR 3/8" KWIK BOLT II INSTALLATION.
5. THE CONTRACTOR SHALL USE FLAT PLATES FOR POST TO STIFFENERS CONNECTION AS A SUBSIDIARY OBLIGATION.
6. ALL POSTS SHALL BE CONTINUOUS IN LENGTH.
7. FOR OVERHEAD MOUNTING, THE SIGN SHALL BE INSTALLED WITHOUT REDUCTION IN THE EXISTING BRIDGE CLEARANCE.
8. THE CONTRACTOR SHALL BE RESPONSIBLE TO ADJUST THE LENGTH OF STIFFENERS ACCORDING TO THE PANEL SHAPE.
9. THE CONTRACTOR SHALL USE THREE VANDAL RESISTANT FASTENERS TO ATTACH THE SIGN PANEL TO EACH STIFFENER. THE FASTENERS SHALL BE LOCATED ONE IN EACH EXTREME AND ONE IN THE CENTER OF STIFFENER.
10. THE CONTRACTOR SHALL ADJUST THE LENGTH OF BOLT TO PENETRATE THE ENTIRE THICKNESS OF THE NUT.
11. ALL ALUMINUM BENT PLATES SHALL CONFORM TO ASTM B-209, ALLOYS 5052 H-32, 5052 H-36, 5052 H-38, 5086 H-34, 5154 H-36 OR 6061 T-6.

EFFECTIVE DATE: JULY 2000

COMMONWEALTH OF PUERTO RICO
DEPARTMENT OF TRANSPORTATION
AND PUBLIC WORKS
HIGHWAY AND TRANSPORTATION AUTHORITY

SMALL TRAFFIC SIGNS
BRIDGE MOUNTING DETAIL

RECOMMENDED BY:
[Signature]
DEPUTY EXEC. DIR. FOR
TRAFFIC AND TOLL ROADS
DATE: 17-1-00
APPROVED BY:
[Signature]
EXECUTIVE DIRECTOR
DATE: MAY 19-00

DATE	REVISION	BY
8-1999	GENERAL REVISION	I.V.
03-2000	DELETED SHEET AND CANTILEVER BRIDGE MOUNTING	I.V.

STD. DWG. 17 OF 25