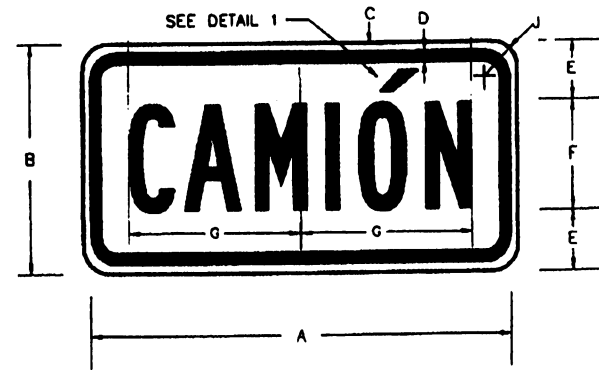


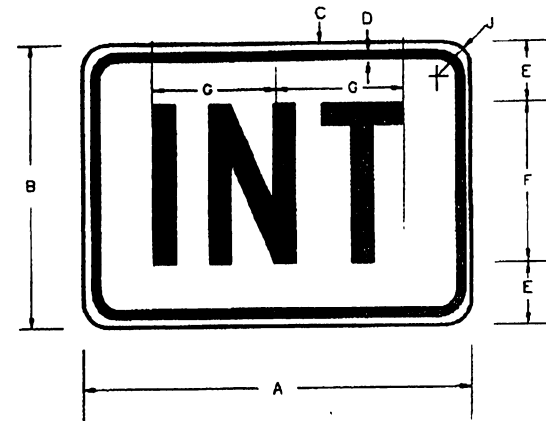
M4-1

DIMENSIONS (INCHES)							
A	B	C	D	E	F	G	J
24.00	12.00	0.38	0.63	3.00	6B	9.25	1.50
36.00	18.00	0.56	0.94	4.50	9B	13.88	2.25
48.00	24.00	0.75	1.25	6.00	12B	18.50	3.00



M4-2

DIMENSIONS (INCHES)							
A	B	C	D	E	F	G	J
24.00	12.00	0.38	0.63	3.50	5B	8.13	1.50
36.00	18.00	0.56	0.94	5.00	8B	12.20	2.25
48.00	24.00	0.75	1.25	7.00	10B	16.26	3.00

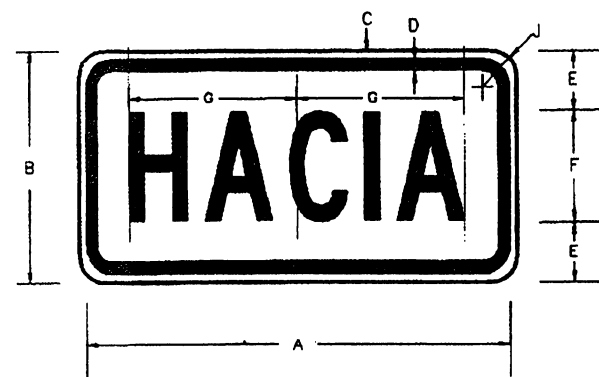


M2-1

DIMENSIONS (INCHES)							
A	B	C	D	E	F	G	J
21.00	15.00	0.38	0.63	3.50	8D	7.45	1.50
31.50	22.50	0.56	0.94	5.25	12D	11.17	2.25
42.00	30.00	0.75	1.25	7.00	16D	14.89	3.00

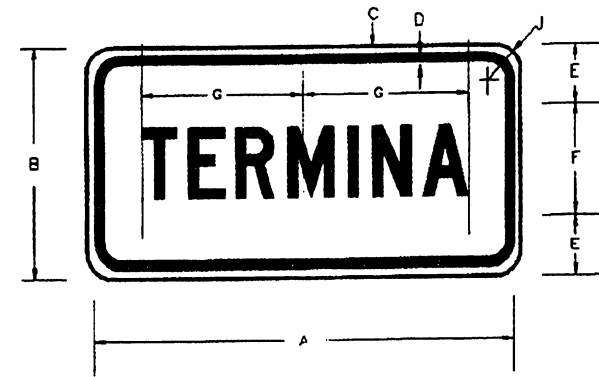
NOTE:

- THE AUXILIARY PLATES SHALL CONFORM TO THE COLOR SCHEME OF THE ROUTE MARKER TO WHICH THEY APPLY AS FOLLOWS:
 FOR M1-6A, USE LEGEND: WHITE (REFL), BACKGROUND: BLUE (REFL)
 FOR M1-6B, USE LEGEND: BLACK (NON-REFL), BACKGROUND: WHITE (REFL)
 FOR M1-6C, USE LEGEND: YELLOW (REFL), BACKGROUND: BLUE (REFL)
 FOR M1-6D, USE LEGEND AND BORDER : BLACK (NON-REFL), BACKGROUND: WHITE (REFL)
- FOR 24"x 24" M1-6A, M1-6B, M1-6C, M1-6D, OR M1-6E USE 24"x 12" (OR 21"x 15", M2-1) AUXILIARY MARKERS.
 FOR 36"x 36" M1-6A, M1-6B, M1-6C, M1-6D, OR M1-6E USE 36"x 18" (OR 31.50"x22.5", M2-1) AUXILIARY MARKERS.
 FOR 48"x 48" M1-6A, M1-6B, M1-6C, M1-6D, OR M1-6E USE 48"x 24" (OR 42"x30", M2-1) AUXILIARY MARKERS.



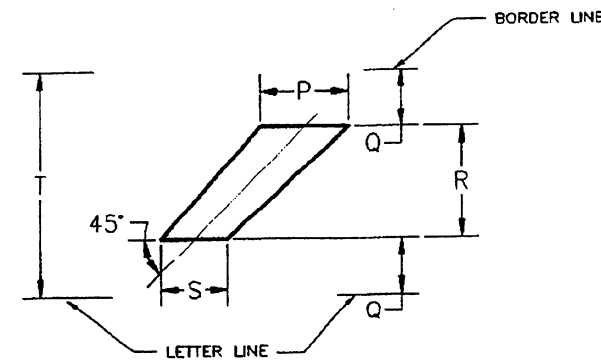
M4-3

DIMENSIONS (INCHES)							
A	B	C	D	E	F	G	J
24.00	12.00	0.38	0.63	3.00	6C	9.47	1.50
36.00	18.00	0.57	0.95	4.50	9C	14.21	2.25
48.00	24.00	0.76	1.26	6.00	12C	18.94	3.00



M4-4

DIMENSIONS (INCHES)							
A	B	C	D	E	F	G	J
24.00	12.00	0.38	0.63	4.00	4C	9.28	1.50
36.00	18.00	0.56	0.94	6.00	6C	13.92	2.25
48.00	24.00	0.75	1.25	8.00	8C	18.56	3.00



DETAIL 1

FOR M4-1					
HEIGHT & SERIES	P	Q	R	S	T
6B	0.75	0.62	1.25	0.56	2.49
9B	1.13	0.75	1.50	0.84	3.00
12B	1.50	1.00	2.00	1.12	4.00

FOR M4-2					
HEIGHT & SERIES	P	Q	R	S	T
5B	0.62	0.62	1.25	0.46	2.49
8B	1.00	0.87	1.75	0.75	3.50
10B	1.25	1.25	2.50	0.94	5.00

EFFECTIVE DATE: JULY 2000

COMMONWEALTH OF PUERTO RICO
 DEPARTMENT OF TRANSPORTATION
 AND PUBLIC WORKS
 HIGHWAY AND TRANSPORTATION AUTHORITY

SMALL TRAFFIC SIGNS
 ROUTE MARKERS
 AUXILIARY MARKERS

RECOMMENDED BY:
 DEPUTY EXC. DIR. FOR
 TRAFFIC AND TOLL ROADS
 DATE: 12/19/99

APPROVED BY:
 EXECUTIVE DIRECTOR
 DATE: 1/19/00

APPROVED BY:
 SECRETARY
 DATE: May 25/00

DATE	REVISION	BY
12-1999	GENERAL REVISION	I.V.
05-2000	GENERAL REVISION	I.V.

STD. DWG. 21 OF 25