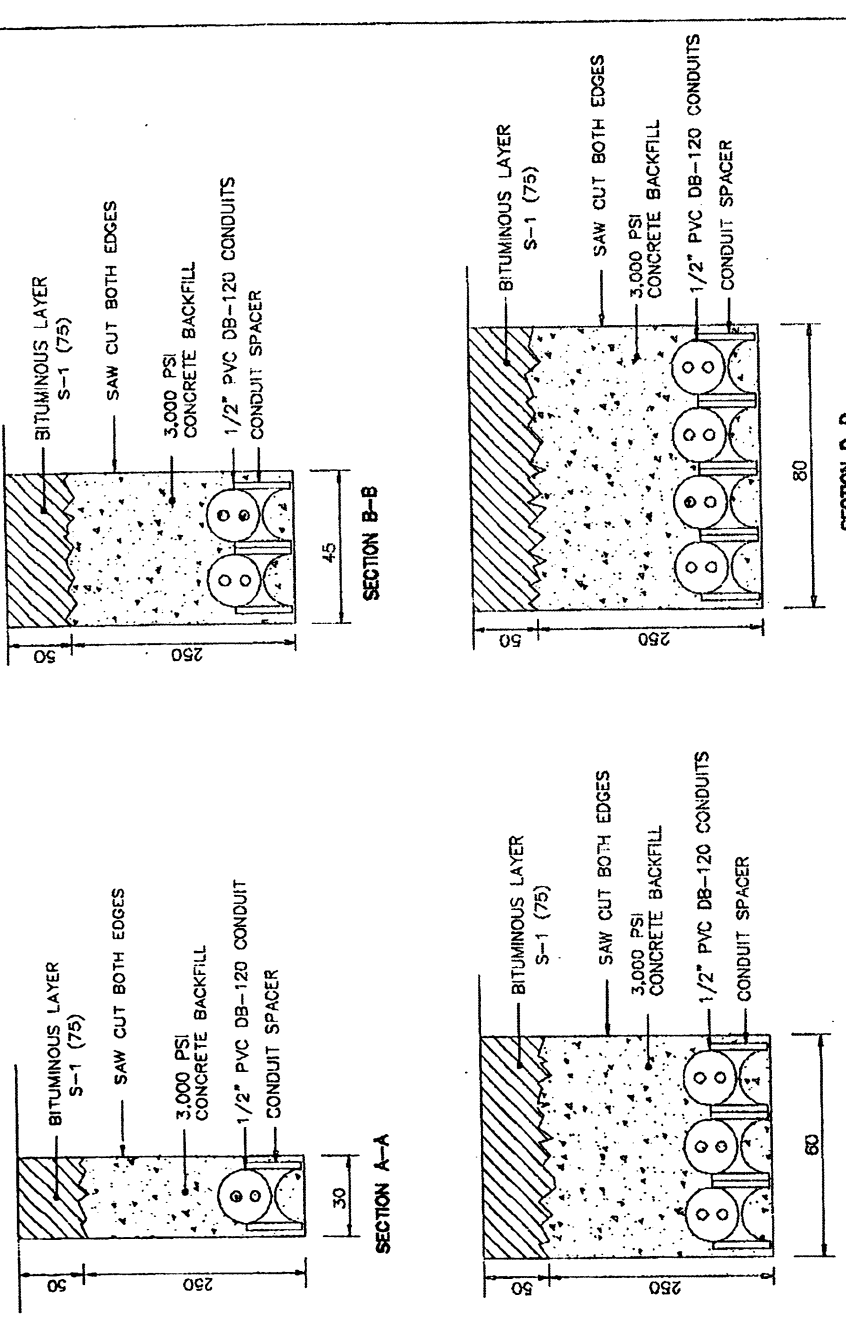
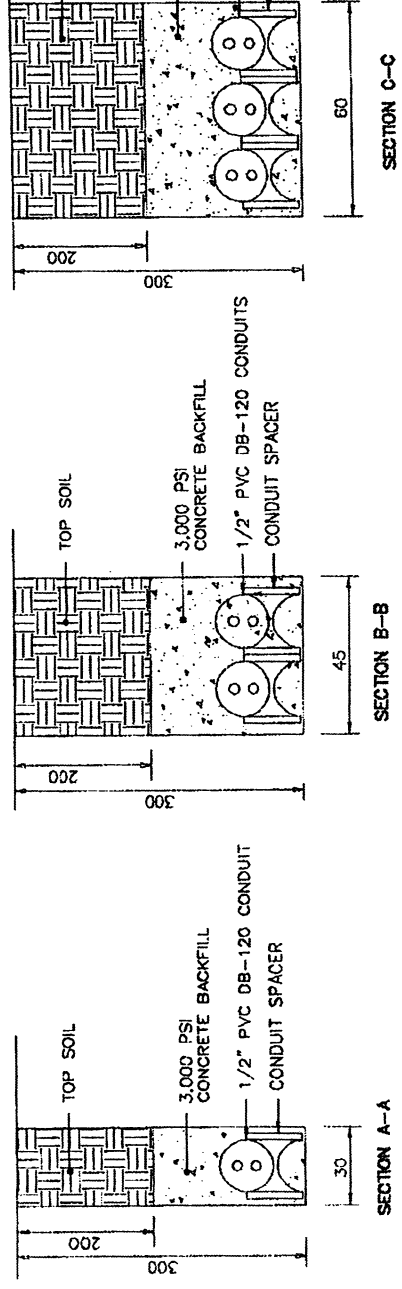


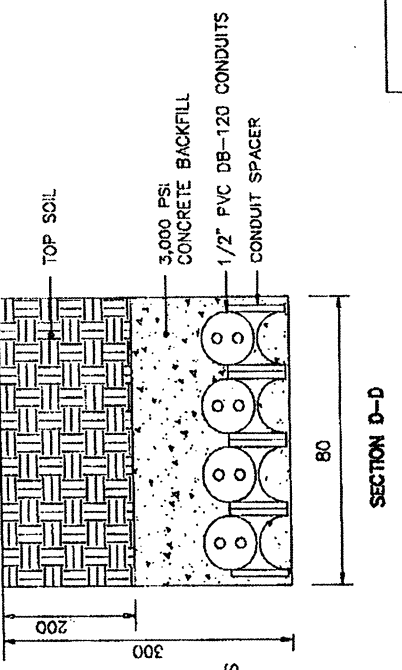
CONCRETE PAVEMENTS, SIDEWALKS
OR OTHER CONCRETE PAVED AREAS



BITUMINOUS AND COMPOSITE PAVEMENT AREAS



PLANTING AREAS



NOTES:

- 1 - ALL EXCAVATION, CONDUITS, CONDUCTORS, PAVEMENT TRENCH, CONCRETE BACKFILL, TOP SOIL, SPlicing AND RELATED WORK FROM THE CONCRETE SLAB FOR LOOP DETECTORS TO PULL BOX ARE SUBSIDIARY OBLIGATIONS OF THE INSTALLATION OF LOOP DETECTOR.
- 2 - CONDUIT SPACERS SHALL BE INSTALLED EVERY 1.5 METERS.
- 3 - THE CONTRACTOR MAY INSTALL CONDUITS PRIOR TO CONSTRUCTION OF PAVED AREA.
- 4 - CONTRACTOR SHALL SAW-CUT WHEN INSTALLING CONDUITS IN EXISTING PAVED AREA.

APPLICATION

- 1 - THE TRENCHES ON THIS DRAWING APPLY TO LOOP CONDUCTORS RUN FROM PRECAST LOOP DETECTOR TO PULL BOX.

EFFECTIVE DATE: APRIL 1997

COMMONWEALTH OF PUERTO RICO
DEPARTMENT OF TRANSPORTATION
AND PUBLIC WORKS
HIGHWAY AND TRANSPORTATION AUTHORITY

RECOMMENDED BY: *[Signature]*
ASST. EXEC. DIR. FOR TRAFFIC
DATE: 8-10-97
APPROVED BY: *[Signature]*
EXECUTIVE DIRECTOR
DATE: 8-10-97

APPROVED BY: *[Signature]*
DIV. ADM. ENGINEER DIVISION
DATE: 8-10-97

TRAFFIC SIGNAL
TRENCH DETAILS I

DATE	REVISION	BY

STD. TRSI
DWG. 8 OF 40