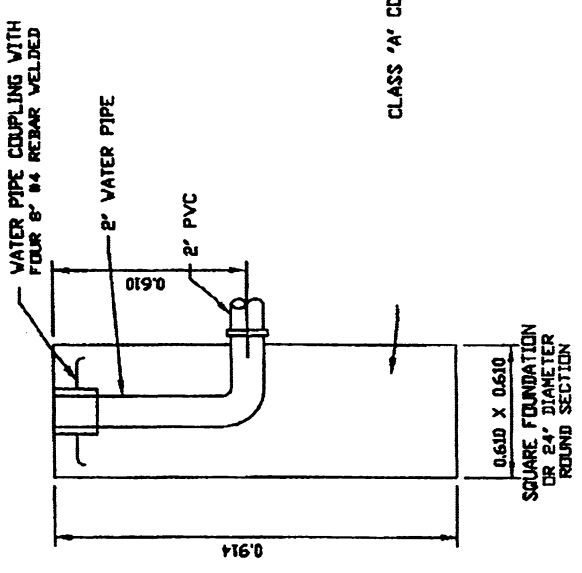
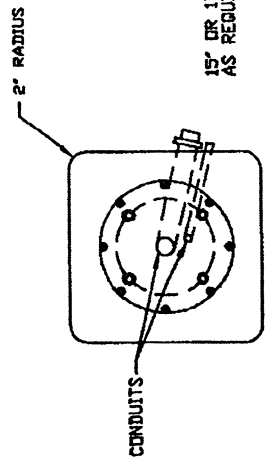


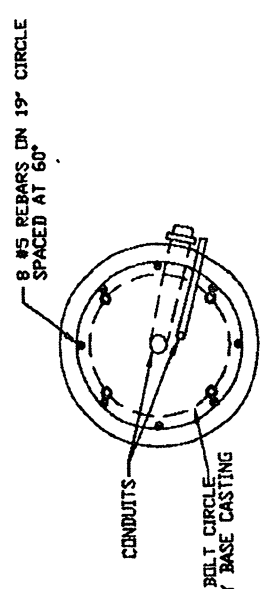
POST MOUNTED SIGNAL FOUNDATION
N.T.S.



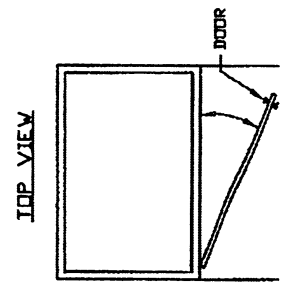
PEDESTRIAN PUSH BUTTON FOUNDATION
N.T.S.



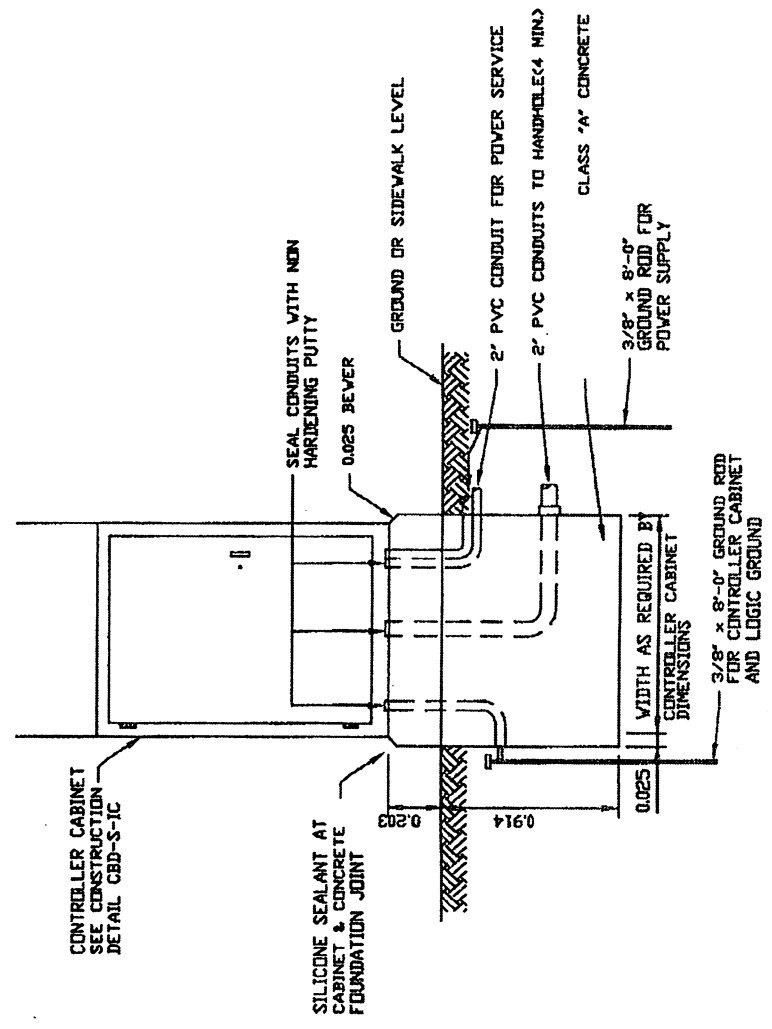
SECTION 'A-A'
N.T.S.



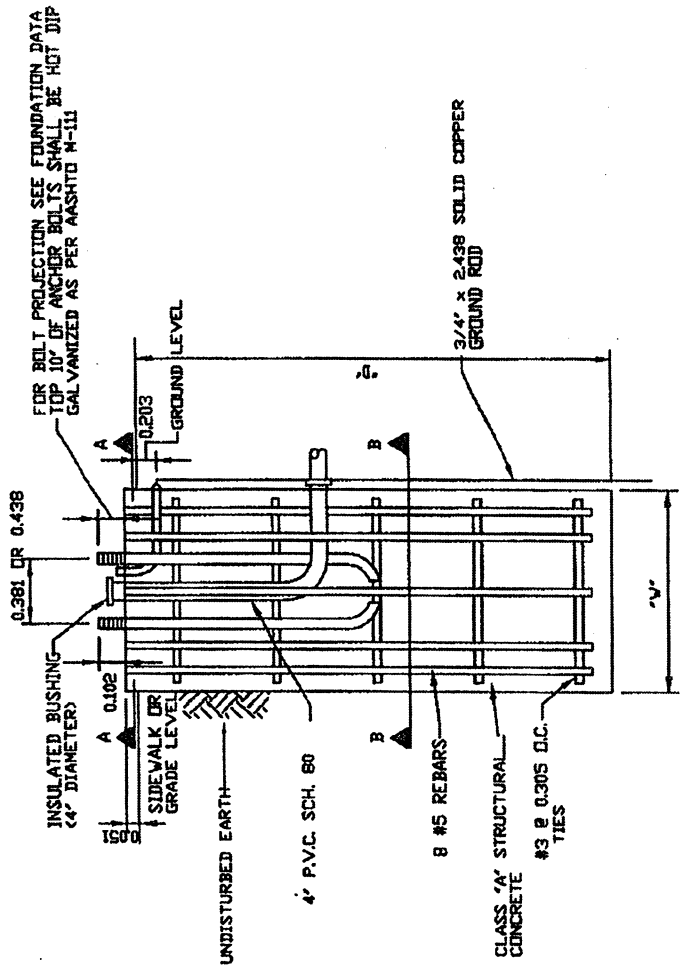
SECTION 'B-B'
N.T.S.



TOP VIEW



TRAFFIC SIGNAL CONTROLLER FOUNDATION AND SERVICE INSTALLATION DETAIL
N.T.S.



TRAFFIC SIGNAL MAST ARM FOUNDATION
N.T.S.

APPLICATIONS

THIS STANDARD SHALL BE USED IN ALL DTPW CONSTRUCTION PROJECTS THAT COMPLY WITH THE FOLLOWING CRITERIA:

- 1- CENTRAL BUSINESS DISTRICT INTERSECTIONS
- 2- URBAN STREETS WITH SPEEDS OF 30 M.P.H. OR LOWER

THIS STANDARD COMPLIES WITH CHAPTER 10 OF THE COMMONWEALTH OF PUERTO RICO RULINGS FOR THE ARRANGEMENT OF UTILITIES IN THE RIGHT OF WAY LIMITS, KNOWN AS "REGLAMENTO DE ORDENACION DE LA INFRAESTRUCTURA EN EL ESPACIO PUBLICO", AS IMPLEMENTED IN 1992.

EFFECTIVE DATE: OCTOBER 1997

COMMONWEALTH OF PUERTO RICO
DEPARTMENT OF TRANSPORTATION
AND PUBLIC WORKS
HIGHWAY AND TRANSPORTATION AUTHORITY

RECOMMENDED BY: [Signature]
EXC. DIR. ASS. FOR TRAFFIC DATE: 11-1-97
APPROVED BY: [Signature]
EXECUTIVE DIRECTOR DATE: 11-1-97
APPROVED BY: [Signature]
DIV. ADM. ENGRS.-PR DIVISION DATE: 11-1-97

TRAFFIC SIGNAL FOUNDATION DETAILS

DATE	REVISION	BY

STD. TRSI
DWG. 9 OF 14