

*-- SEE REQUIREMENTS

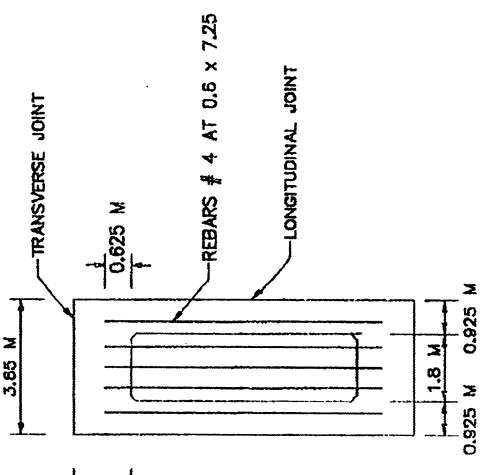
*-- SEE REQUIREMENTS

DIRECTIONAL DETECTOR

POINT DETECTOR

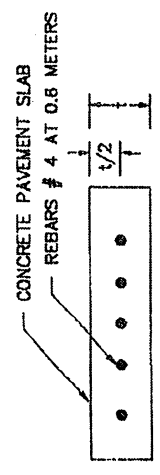
PRESENCE DETECTOR

REQUIREMENTS (FOR POINT & DIRECTIONAL DETECTOR LOOPS):
 1- DISTANCE FROM LOOP TRENCH TO TRANSVERSE JOINT:
 MINIMUM DISTANCE-- ±0.625 METER



REQUIREMENTS (FOR PRESENCE DETECTOR LOOP):

1- DISTANCE FROM STOP LINE TO LOOP TRENCH:
 MAXIMUM DISTANCE-- 0.9 M
 MINIMUM DISTANCE-- 0.3 M
 2- DISTANCE FROM LOOP TRENCH TO TRANSVERSE JOINT:
 MINIMUM DISTANCE-- ±0.6 M.



SECTION DETAIL

NOTES:

- 1- REINFORCEMENT SHALL BE INSTALLED ACCORDING TO SPECIFICATION 505 OF THE STANDARD SPECIFICATIONS FOR ROAD AND BRIDGE CONSTRUCTION.
- 2- STEEL REINFORCEMENT SHALL NOT BE EPOXY COATED.
- 3- THE LOOP DETECTORS SHALL BE CENTERED IN PROPOSED LANE WITH A TOLERANCE OF 100 TO EACH SIDE OF LANE CENTERLINE.
- 4- AT HIS EXPENSE, THE CONTRACTOR MAY REINFORCE THE ENTIRE LOOP SLAB OR SLABS AS A SUBSIDIARY OBLIGATION.

EFFECTIVE DATE: APRIL 1997

COMMONWEALTH OF PUERTO RICO
 DEPARTMENT OF TRANSPORTATION
 AND PUBLIC WORKS
 HIGHWAY AND TRANSPORTATION AUTHORITY

TRAFFIC SIGNAL
 INSTALLATION DETAILS
 FOR LOOP DETECTORS IN
 NEW OR EXISTING
 P.C.C. PAVEMENTS

RECOMMENDED BY: [Signature]
 ASST. EXC. DIR. FOR TRAFFIC
 DATE: 12/17/97
 APPROVED BY: [Signature]
 EXECUTIVE DIRECTOR
 DATE: [Signature]
 APPROVED BY: [Signature]
 DIV. ADM. FHW-22 DIVISION
 DATE: [Signature]

DATE	REVISION	BY

STD. TRSI
 DWG. 12 OF 40