

**SPECIFICATIONS**

ANCHOR BOLT SHALL BE HOT BENT AND SHALL MEET THE REQUIREMENT OF ASTM A-875 OR 80 OR F1554 GR. 36. NUTS SHALL MEET THE REQUIREMENTS OF ASTM A-563 GRADE A AND ANSI B18.2.2 HEX TYPE.

FLAT WASHER SHALL MEET THE REQUIREMENTS OF ANSI B27.2 HEAVY WASHER.

LOCK WASHERS SHALL MEET THE REQUIREMENT OF ANSI 18.21.1 HEAVY WASHER.

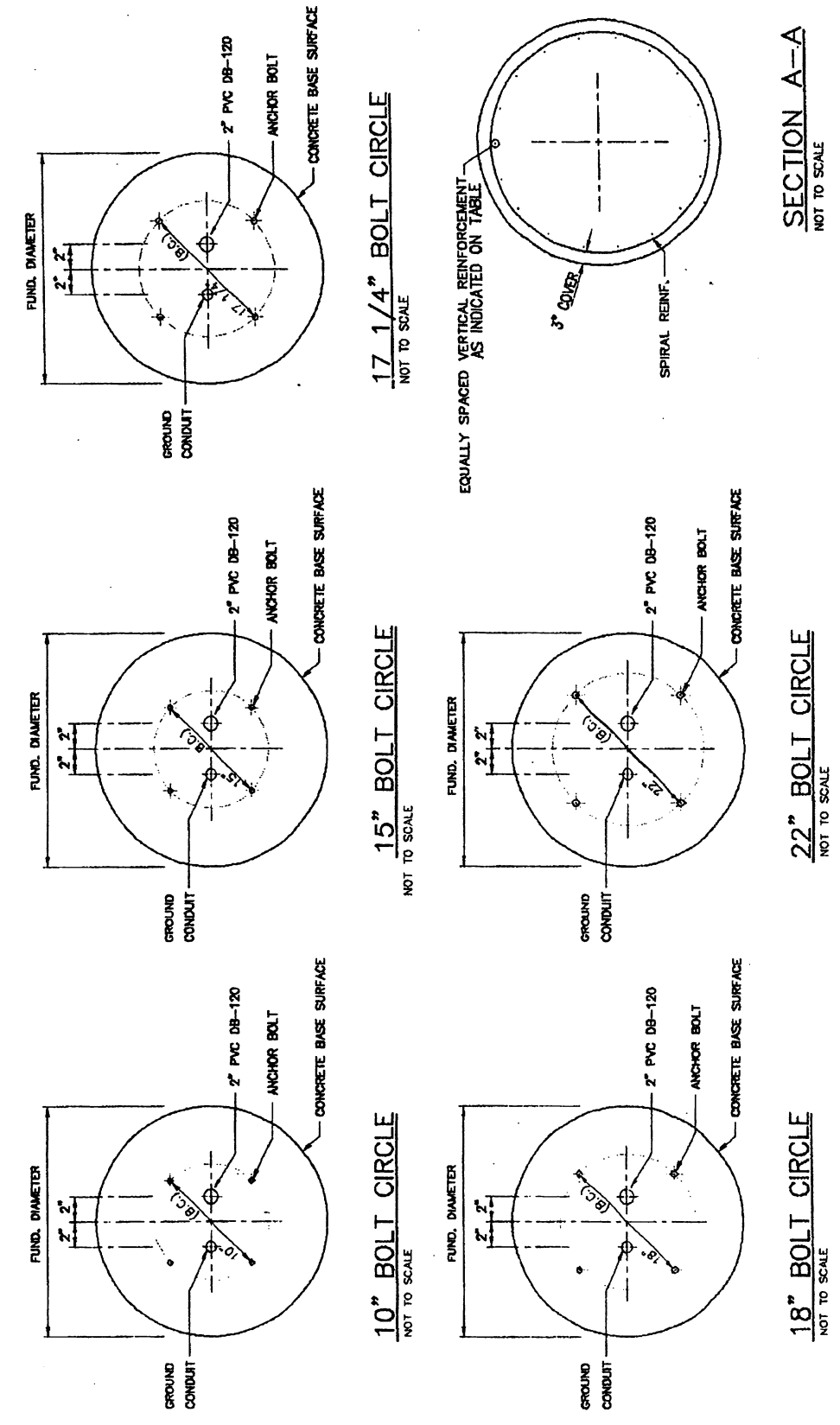
BOLTS, NUTS AND WASHER SHALL BE GALVANIZED IN ACCORDANCE WITH ASTM A-153.

- NOTES**
1. THE CONTRACTOR MAY ELECT TO CAST-IN-PLACE THE CONCRETE FOUNDATION OR PROVIDE PRE-CAST FOUNDATION IN ACCORDANCE WITH THESE STANDARD PLANS AND APPROVED SHOP DRAWINGS.
  2. IN THE CASE OF CAST-IN-PLACE FOUNDATION, THE CONCRETE SHALL BE POURED AGAINST UNDISTURBED SOIL.
  3. IN THE CASE OF PRE-CAST FOUNDATIONS, THE SPACE BETWEEN THE EXCAVATION AND THE PRE-CAST FOUNDATION SHALL BE FILLED WITH DRY SAND MEETING THE REQUIREMENTS OF SPECIFICATION 703-1, AFTER PLACEMENT, THE SAND SHALL BE COMPACTED SATURATION WITH WATER.
  4. THIS DIMENSION SHALL NOT APPLY WHEN INSTALLING BASE IN SIDEWALKS, IN WHICH CASE SHALL BE FLUSH WITH SIDEWALK SLAB.

**ELEVATION**

**BASE DETAIL**  
NOT TO SCALE

**ANCHOR BOLT DETAIL**



**TRAFFIC SIGNAL FOUNDATIONS**

ITEM	ARM LENGTH (MAX.)	W	D	VERTICAL REINFORCEMENT	BOLT CIRCLE	ANCHOR BOLT DIAMETER-LENGTH/DIAMETER-LENGTH (REMARK 1)	ANCHOR BOLT DIAMETER-LENGTH/DIAMETER-LENGTH (REMARK 2)
MAST ARM MOUNTED	25'-0"	3'-0"	8'-0"	8 #8	15"	1 1/4" - 48"	1 3/4" - 84"
MAST ARM MOUNTED	32'-6"	3'-0"	8'-0"	12 #8	15"	1 1/4" - 48"	1 3/4" - 84"
MAST ARM MOUNTED	45'-0"	3'-0"	10'-0"	12 #8	17 1/4"	1 1/4" - 48"	(REMARK 3)
MAST ARM MOUNTED	60'-0"	3'-0"	10'-0"	12 #8	22"	(REMARK 3)	1 3/4" - 84"
MONO TUBE MOUNTED	70'-0"	3'-0"	8'-0"	12 #8	*	(REMARK 3)	2" - 84"
POST TOP MOUNTED	-	2'-0"	5'-6"	12 #8	10"	3/4" - 17"	3/4" - 17"

**REMARKS:**  
\* TO BE DESIGNED BY MANUFACTURER  
1- FOR ALUMINUM STRUCTURES  
2- FOR GALVANIZED STEEL STRUCTURES  
3- NOT AVAILABLE

**17 1/4" BOLT CIRCLE**  
NOT TO SCALE

**15" BOLT CIRCLE**  
NOT TO SCALE

**10" BOLT CIRCLE**  
NOT TO SCALE

**LEGEND**  
B.C. - BOLT CIRCLE

EFFECTIVE DATE: MAY 1997

COMMONWEALTH OF PUERTO RICO  
DEPARTMENT OF TRANSPORTATION AND PUBLIC WORKS  
HIGHWAY AND TRANSPORTATION AUTHORITY

TRAFFIC SIGNAL  
FOUNDATION DETAILS FOR ALUMINUM AND GALVANIZED STEEL POLES

RECOMMENDED BY: [Signature]  
ASST. EXEC. DIR. FOR TRAFFIC  
DATE: 5/2/97

APPROVED BY: [Signature]  
EXECUTIVE DIRECTOR  
DATE: 5/2/97

APPROVED BY: [Signature]  
DIV. ADM. 5/2/97

DATE	REVISION	BY

STD. TRSI  
DWG. 21 OF 40