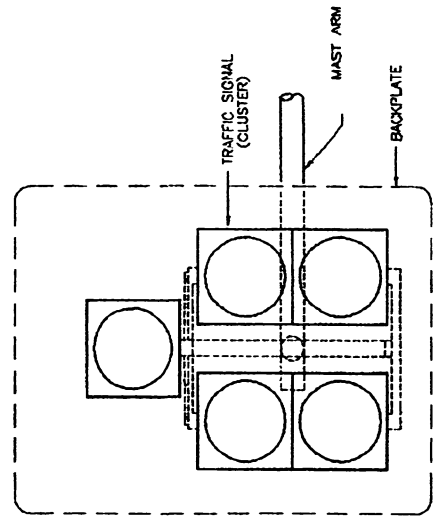
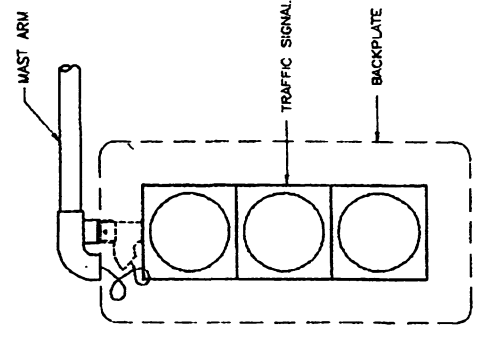


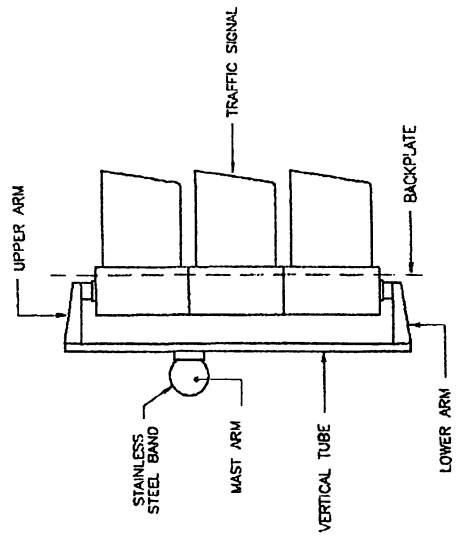
CLUSTER FACE (SLIP FITTER)
5-SR-C
5-SL-C



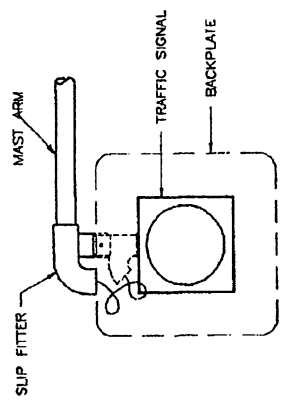
CLUSTER FACE (BRACKET)
5-SR-C
5-SL-C



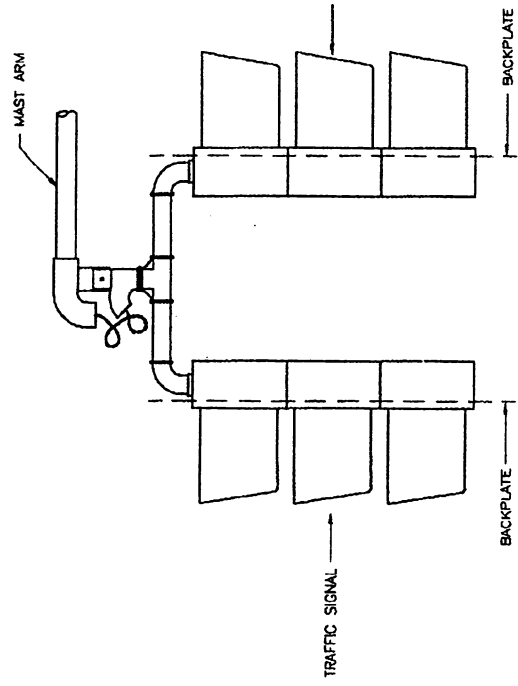
THREE SECTIONS (SLIP FITTER)
3-S-V
3-R-V
3-L-V



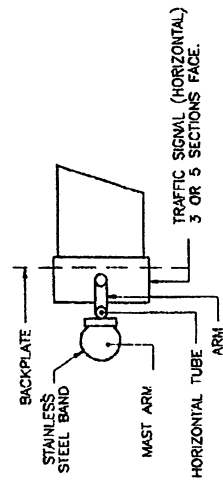
THREE SECTIONS (BRACKET)
3-S-V
3-R-V
3-L-V



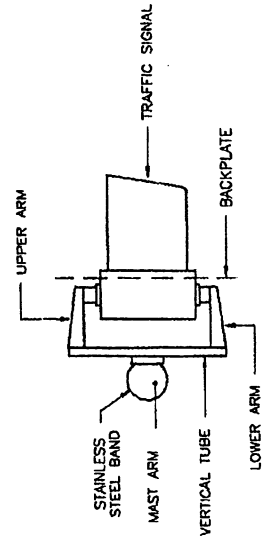
CONTINUOUS MOVEMENT OR FLASHING BEACON (SLIP FITTER)
1-F-Y
1-F-R



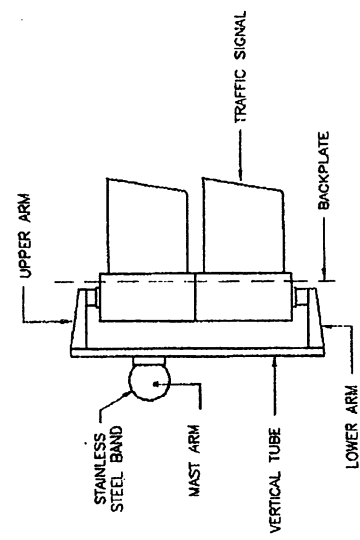
THREE SECTIONS OR CLUSTERS (SLIP FITTER)
3-S-V
3-R-V
3-L-V



3 OR 5 HORIZONTAL SECTIONS-Arm (BRACKET)
3-S-H
3-R-H
3-L-H
5-SR-V
5-SR-V



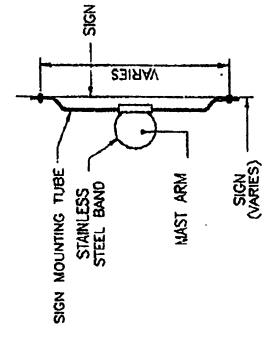
CONTINUOUS OR ONE SECTION BEACON-Arm (BRACKET)
1-F-Y
1-F-R



TWO SECTIONS BEACON-Arm (BRACKET)
2-F-Y
2-F-R

NOTES:

- 1- ALL MOUNTINGS INDICATED IN THIS DRAWING ARE SUITABLE FOR TRUSS & TUBULAR TYPE MAST ARMS STRUCTURES.
- 2- ALL TRAFFIC SIGNAL FACES SHALL BE ORIENTED TOWARDS PROPOSED CONTROLLED LANES.
- 3- CONTRACTOR SHALL PROVIDE ALL NECESSARY MATERIALS AND HARDWARE FOR THE INSTALLATION OF THE TRAFFIC SIGNAL FACES.
- 4- CLEARANCE ABOVE ANY PORTION OF THE FINISHED PAVEMENT SHALL BE 5.8 METERS MINIMUM AND 6.0 METERS MAXIMUM.
- 5- THE BOTTOM OF SIGNAL HEADS ON EACH APPROACH SHALL BE AT THE SAME LEVEL.
- 6- WIRE OUTLET SHALL BE GASKETED AND RAIN-TIGHT TYPE.
- 7- SLIP FITTER FOR CLUSTER FACES SHALL BE USED WITH POLYCARBONATE SECTIONS ONLY.



SIGN-ARM (BRACKET)

EFFECTIVE DATE: OCTOBER 1997

COMMONWEALTH OF PUERTO RICO DEPARTMENT OF TRANSPORTATION AND PUBLIC WORKS HIGHWAY AND TRANSPORTATION AUTHORITY		RECOMMENDED BY: <i>[Signature]</i>
TRAFFIC SIGNAL		ASST. EXEC. DIR. FOR TRAFFIC DATE: 27 OCT 1997
TRUSS & TUBULAR TYPE MAST ARM MOUNTING		APPROVED BY: <i>[Signature]</i>
DATE		EXECUTIVE DIRECTOR DATE: 29 OCT 97
REVISION		APPROVED BY: <i>[Signature]</i>
BY		ADM. DIVISION
DATE		DATE: 29 OCT 97
STD. TRSI		DATE: 29 OCT 97
DWG. 25 OF 40		